



ENGLISH

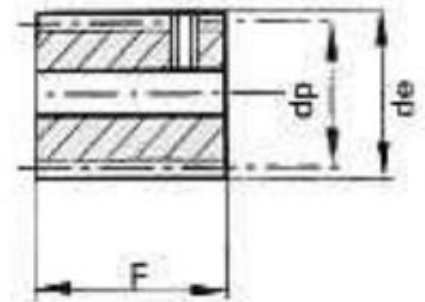
## Datasheet Metric Worms 0.8 Mod - 1 Mod



### Specifications:

Material: En8 or equivalent  
Single (1R) & Double (2R) Start  
Right Hand  
20 degree p.a.  
Bore tolerance H7

TYPE D



All dimensions in mm

Standard tolerances, unless otherwise stated + - 0.25mm

All worms are supplied with black oxide finish

They are supplied with a M4 G/S fitted (5mm from one end)

1R=Single Start

2R=Double Start

RS Article Number	Code	Pitch Module	dp	de	Bore	F	Type
5218559	SWB08/1R	0.8	14	15.6	6	30	D
5216812	SWB08/2R	0.8	14	15.6	6	30	D
5216890	SWB10/1R	1	16	18	6	32	D
5216907	SWB10/2R	1	16	18	6	32	D