

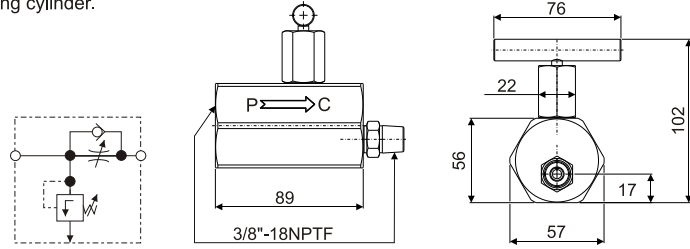
DV/W Series Valve

※unit (mm)

Maximum Operating Pressure:
700 bar

Manually Operated Check Valve

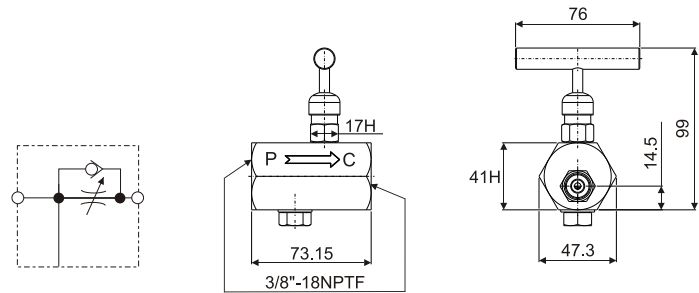
- Valve is manually opened to allow oil to flow back to tank when cylinder retracts.
- Used for load holding applications with single and double acting cylinder.



DV-66

Manually Operated Check Valve

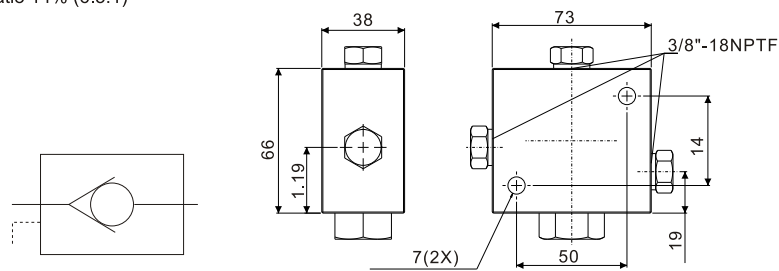
- Valve is manually opened to allow oil to flow back to tank when cylinder retracts.
- Used for load holding applications with single and double acting cylinder.



DV-66-3

Pilot Operated Check Valve

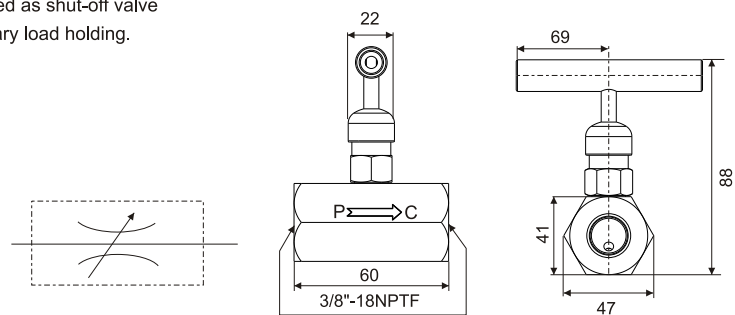
- Can be mounted at the cylinder to hold the load in case of system pressure loss.
- Normally used with double-acting cylinders where pilot port receives pressure from a T-fitting in the cylinder retract line.
- 3/8" NPTF female ports.
- Pilot pressure ratio 14% (6.5:1)



DV-42

Needle Valve

- 3/8"-18NPTF female ports.
- To control cylinder speed.
- Also be used as shut-off valve for temporary load holding.



DV-82

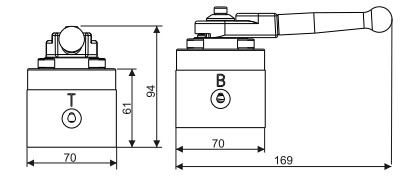
Control Valves

- 4-way/3-position
- Lever operated, detent positioned.
- Application :double-acting cylinders and single-acting cylinders which be equipped with DV-66-3.
- Provides "advance", "hold" and "return".

Model No.	Advance	Hold	Retract
DW-700			
DW-700B			

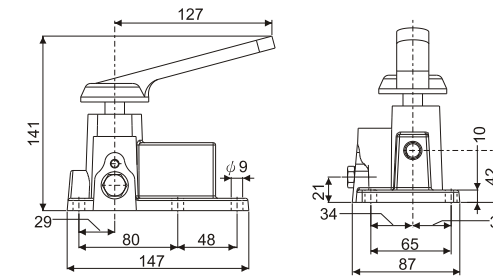
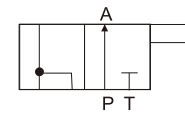


DW-700



Control Valves

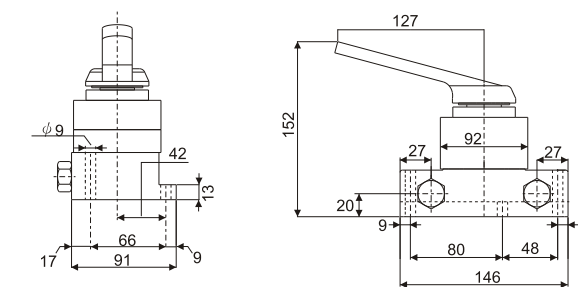
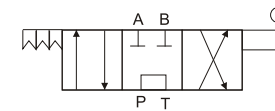
- 3-way/2-position manual control valve.
- Provides "advance" and "return".
- For use with single-acting cylinder.



DVM-S2

Control Valves

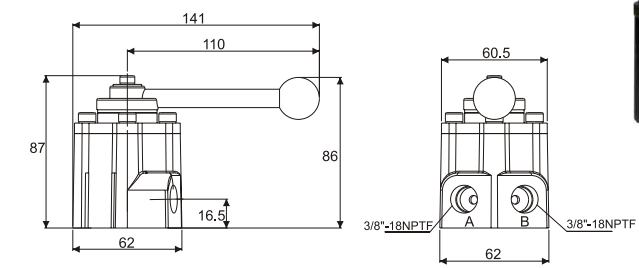
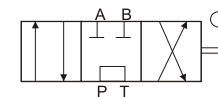
- 4-way/3-position manual control valve.
- Tandem center, lever operated, detent positioned.
- Provides "advance", "hold" and "return".
- For use with double-acting or two single-acting cylinder.



DVM-D4

Control Valves

- 4-way/3-position manual control valve.
- Tandem center, lever operated, detent positioned.
- Provides "advance", "hold" and "return".
- For use with double-acting or two single-acting cylinder.



DVR-D4