



# MASTER LEDtube Mains T5

## MAS LEDtube 1200mm HE 16.5W 865 T5

The new Philips Master LEDtube Mains T5 brings simplicity to your lighting project. You don't need to pay attention to the driver technology anymore. Thanks to a unique design, Philips MASTER LEDtube Mains T5 installs in luminaires operating on mains power connection. So simple to operate! . Perfectly safe, reliable & easy to install Philips MASTER LEDtube Mains T5 is the ideal alternative to standard fluorescent tubes to maximize value over lifetime with high energy saving and lower maintenance costs.

### Product data

General Information		Operating and Electrical	
Cap-Base	G5 [G5]	Line Frequency	50 to 60 Hz
Nominal lifetime	50,000 hour(s)	Input Frequency	50 to 60 Hz
Switching Cycle	200,000	Power Consumption	16.5 W
Lighting Technology	LED	Lamp Current (Max)	180 mA
EU RoHS compliant	Yes	Lamp Current (Min)	70 mA
<b>Light Technical</b>		Starting Time (Nom)	0.5 s
Color Code	865 [CCT of 6500K]	Warm-up time to 60% light	0.5 s
Beam Angle (Nom)	200 degree(s)	Power Factor (Fraction)	0.9
Luminous Flux	2,500 lm	Voltage (Nom)	100-240 V
Color Designation	Cool Daylight	<b>Temperature</b>	
Correlated Color Temperature (Nom)	6500 K	Ambient temperature range	-20 °C to 45 °C
Luminous Efficacy (rated) (Nom)	151.00 lm/W	T-Case Maximum (Nom)	70 °C
Color Consistency	<6	<b>Controls and Dimming</b>	
Color rendering index (CRI)	80	Dimmable	No
LLMF At End Of Nominal Lifetime (Nom)	70 %		

# MASTER LEDtube Mains T5

## Mechanical and Housing

Bulb Finish	Frosted
Bulb Material	Glass
Product Length	1,200 mm
Bulb Shape	T5

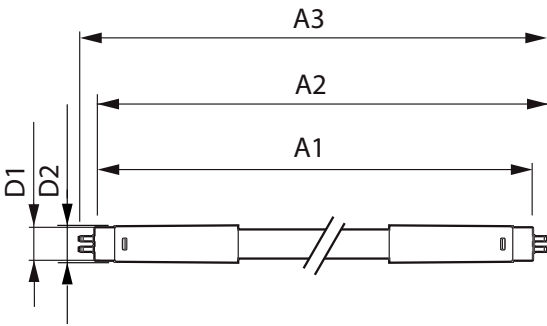
## Approval and Application

Energy Saving Product	Yes
Approval Marks	RoHS compliance CE marking KEMA Keur certificate
Energy Consumption kWh/1000 h	17 kWh

## Product Data

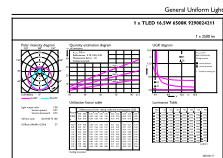
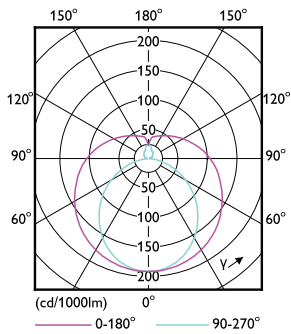
Order product name	MAS LEDtube 1200mm HE 16.5W 865 T5
Full product name	MAS LEDtube 1200mm HE 16.5W 865 T5
Full product code	871869978353200
Order code	929002421108
Material Nr. (12NC)	929002421108
Numerator - Quantity Per Pack	1
EAN/UPC - Product/Case	8718699783532
Numerator - Packs per outer box	10
EAN/UPC - Case	8718699783549

## Dimensional drawing



Product	D1	D2	A1	A2	A3
MAS LEDtube 1200mm HE 16.5W 865 T5	15.8 mm	19 mm	1,149 mm	1,156.1 mm	1,163.2 mm

## Photometric data

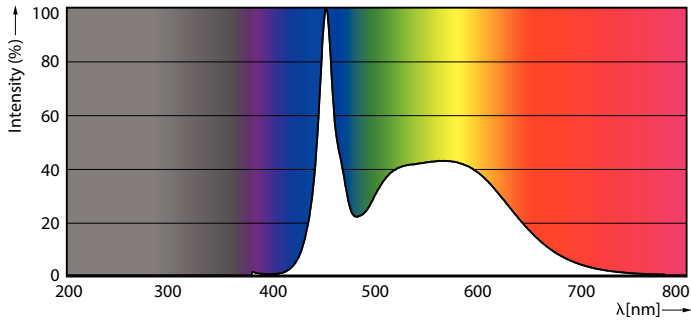


Light Distribution Diagram - MAS LEDtube 1200mm HE 16.5W 865 T5

General uniform lighting - MAS LEDtube 1200mm HE 16.5W 865 T5

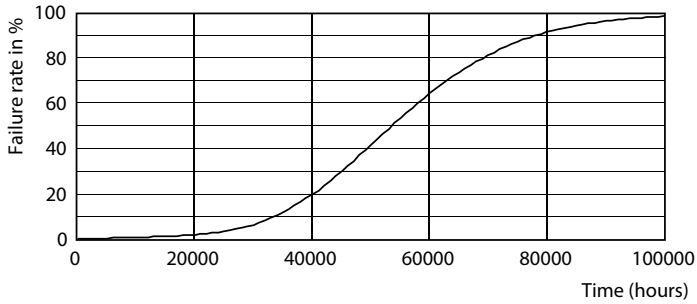
# MASTER LEDtube Mains T5

## Photometric data

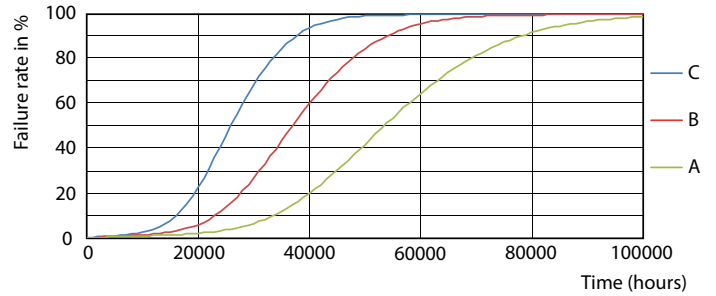


Spectral Power Distribution Colour - MAS LEDtube 1200mm HE 16.5W 865 T5

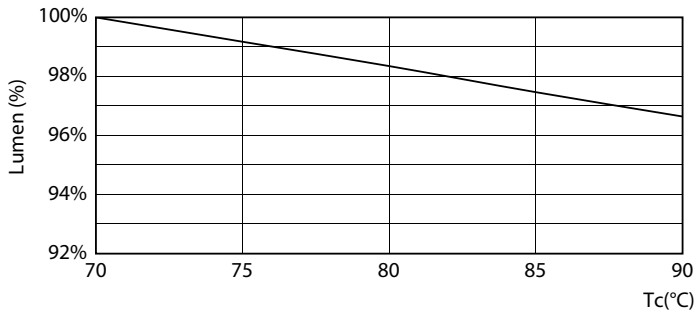
## Lifetime



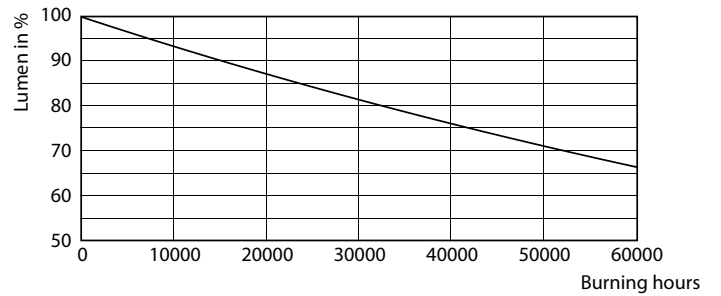
Life Expectancy Diagram - MAS LEDtube 1200mm HE 16.5W 865 T5



Life Expectancy Diagram - MAS LEDtube 1200mm HE 16.5W 865 T5



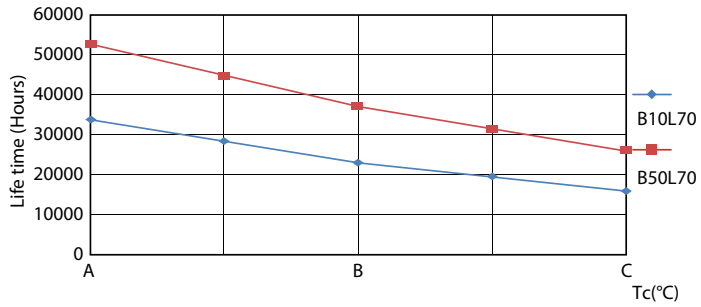
Lumen Maintenance Diagram - MAS LEDtube 1200mm HE 16.5W 865 T5



Lumen Maintenance Diagram - MAS LEDtube 1200mm HE 16.5W 865 T5

# MASTER LEDtube Mains T5

## Lifetime



Life Expectancy Diagram - MAS LEDtube 1200mm HE 16.5W 865 T5

