

FEATURES

- Available in both metric and BSP-based Imperial sizes
- Hardness: 1 RHD 85-95
- Seals come in a range of sizes
- Reliable in high pressure applications

RS PRO Nitrile Rubber SealBonded Seal, 13.74mm Bore, 20.57mm Outer Diameter

RS Stock No.: 689-473



RS Professionally Approved Products bring to you professional quality parts across all product categories. Our product range has been tested by engineers and provides a comparable quality to the leading brands without paying a premium price.

Product Description

These RS PRO seals comprise a metal annulus to which a medium nitrile elastomeric ring of trapezoidal cross-section is bonded. They provide high and low pressure sealing for ports on fluid systems where mineral based hydraulic fluids or mineral based engine lubricating oils are present

General Specifications

Type	Bonded Seal
Material	Nitrile Rubber
Application	Automotive; Plumbing; Aerospace; General Engineering
Resistance To	Mineral Hydraulic Oils And Grease
Kit Contents	8 Pieces

Mechanical Specifications

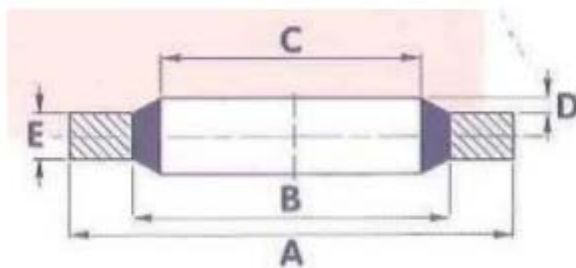
Inside Diameter	13.74mm
Outside Diameter	20.57mm
Thickness	2.03mm
Hardness	1 RHD 85-95
Tensile Strength	14N/mm ²
Elongation At Break Point	250%
Specific Gravity	1.372
Density	1.3g/cm ³
Heat Resistance	Tested To 100°C For 70 Hours
Compression Set 22h/ 100°C	14%
Volume Change	-5.57%

Operation Environment Specifications

Minimum Operating Temperature	-10°C
Maximum Operating Temperature	80°C
Glass Transition Temperature	-35°C

Approvals

Compliance/Certifications	CE / UR / cUR
---------------------------	---------------



PLAIN



REFERENCE	SIZE (INCHES)		A	B	C	D	E	APPROX BURST PRESSURE (BAR)
	BSP	BOLT	+0.13 -0.00	+0.10 -0.10	+0.10 -0.10		+0.15 -0.15	
	-	6BA	6.35	4.09	3.05	0.20/ 0.45	1.22	2150
	-	4BA	7.26	5.26	4.12			1570
	-	2BA	8.38	6.35	5.21			1375
	-	1/4	13.21	8.00	6.86			2450
	-	1/4	13.34	9.53	6.99			1700
	-	5/16	13.34	9.53	8.31			1700
	-	5/16	14.22	10.04	8.64			1750
689-467	1/8	3/8	15.88	11.84	10.37	0.25/ 0.51	2.03	1500
	-	0.4	18.36	12.45	11.26			1950
	-	7/16	19.05	13.08	11.69			1900
689-473	1/4	1/2	20.57	15.21	13.74			1550
	-	9/16	22.23	16.39	14.86			1575
	-	0.6	22.23	17.30	15.83			1310
	-	5/8	25.40	18.75	16.51			1550
689-489	3/8	-	23.80	18.75	17.28			1260
	-	11/16	25.40	19.69	18.16			1320
	-	3/4	26.92	21.21	19.69			1260
689-495	1/2	13/16	28.58	23.01	21.54			1150
	5/8	7/8	31.75	24.97	23.49			1250
	-	15/16	33.27	26.04	24.26			1275
689-502	3/4	1.0	34.93	28.53	27.05			1060
	-	1.1/16	38.61	30.61	27.82	1250		
	-	1.1/8	36.58	30.86	29.33	900		
	7/8	1.3/16	38.10	32.29	30.81	900		
	-	1.1/4	41.40	35.69	32.64	3.38	800	
689-518	1.0	1.5/16	42.80	36.88	33.89	2.50	810	