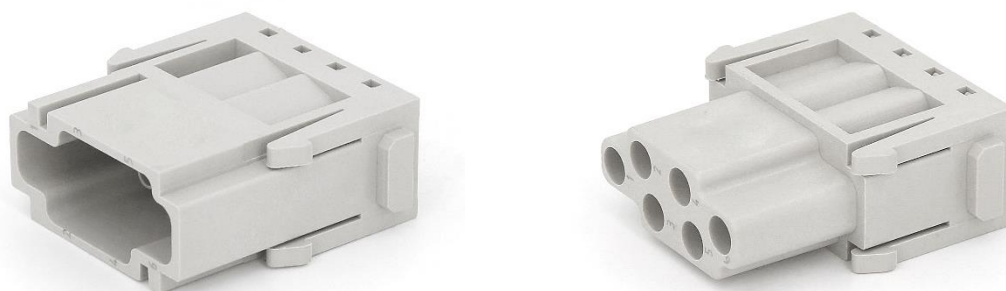


Datasheet

RS PRO RS-HM Modular Inserts



The RS PRO Heavy-Duty Connector series is a full range of heavy-duty inserts, housings, crimps and accessories. The inserts are all made from Polycarbonate to industry standard sizes and are available in a choice of screw, crimp or spring clam terminations in a large variety of current ratings. Modular inserts are also offered allowing for maximum versatility when designing a system. These connectors have been created for applications that are subjected to harsh environments or where high vibration can cause standard connectors to fail. This makes them ideal for food & beverage manufacturing, packaging machines, conveyor belt systems, railway, oil & gas processing and other industrial automation. The entire range of connectors are RoHS compliant and as with all RS PRO products, offer exceptional value for money.

Features & Benefits:

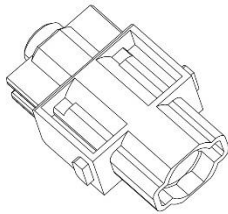
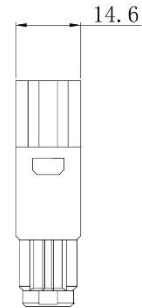
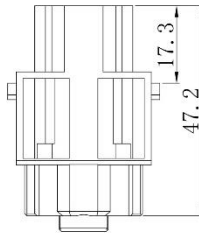
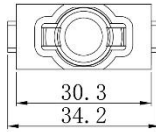
- Modular Inserts
- For use with RS PRO Heavy-Duty Frames
- Fit RS PRO H6B, H10B, H16B & H24B Housing
- Polycarbonate Body

Quality Standards

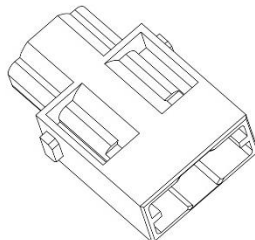
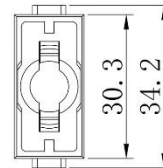
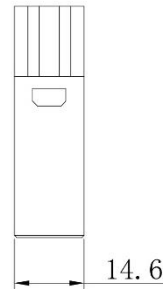
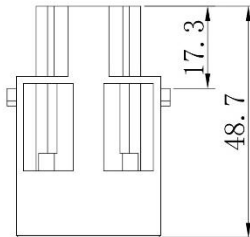


Dimensional line drawings

1 Pole Female Crimp 100A 830V 208-4580

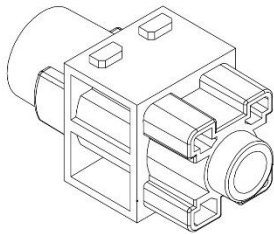
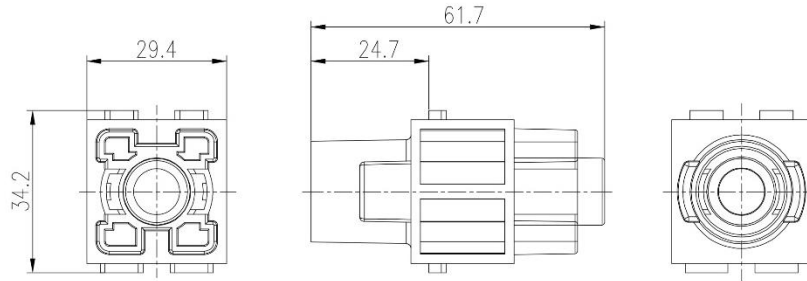


1 Pole Male Crimp 100A 830V 208-4581

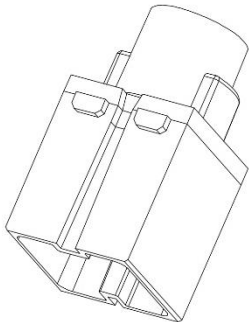
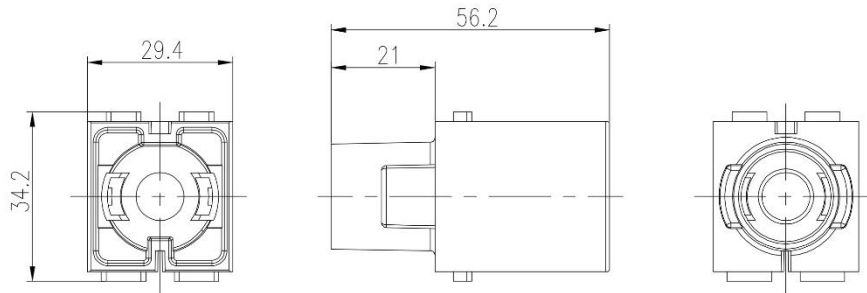


Dimensional line drawings

1 Pole Female Crimp 200A 1000V 208-4093

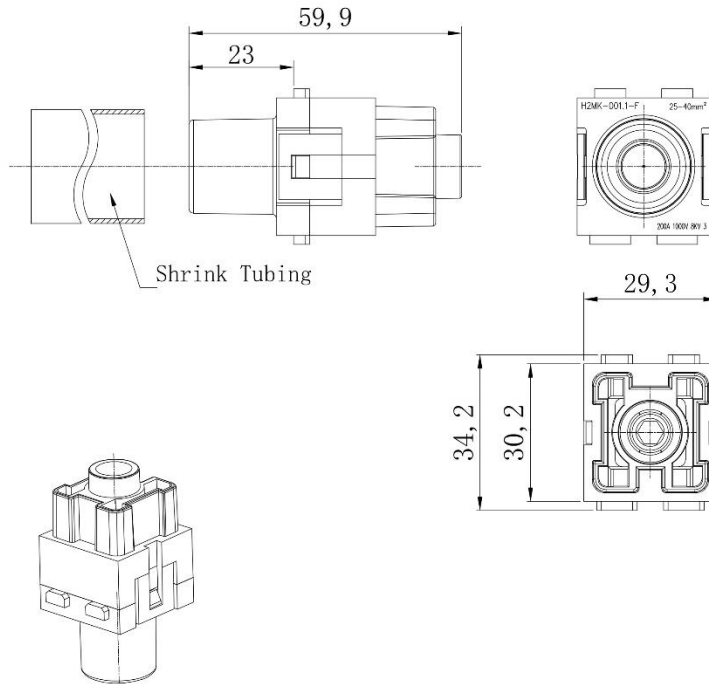


1 Pole Male Crimp 200A 1000V 208-4095

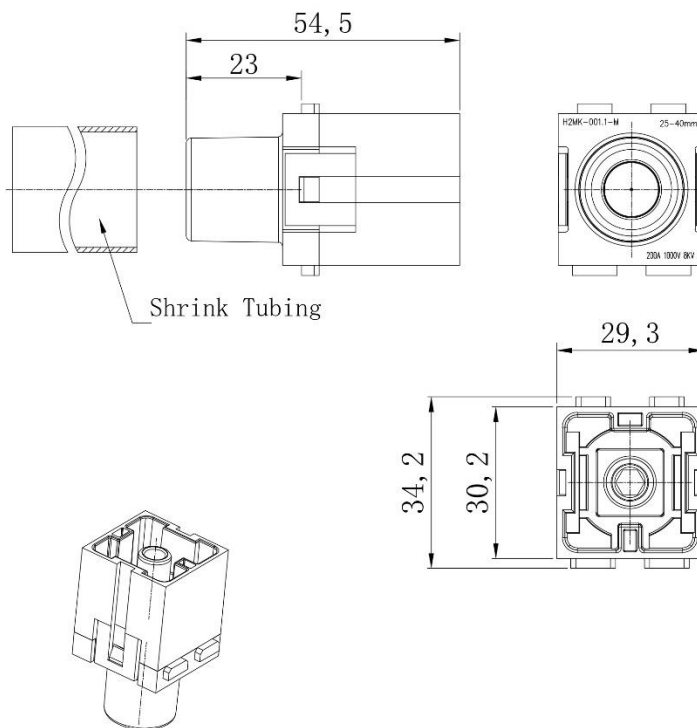


Dimensional line drawings

1 Pole Female Screw 200A 1000V for 25-40mm² Cable Diameter 208-4089

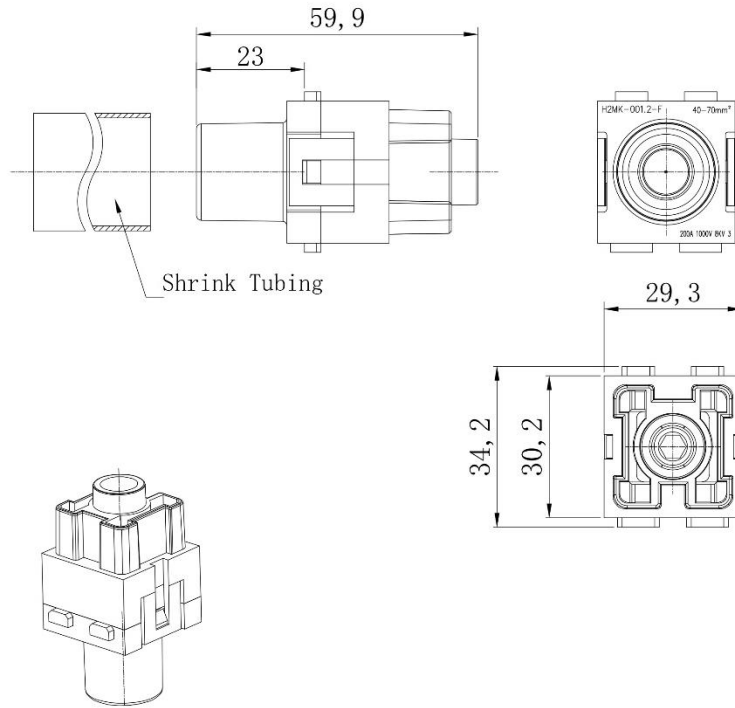


1 Pole Male Screw 200A 1000V for 25-40mm² Cable Diameter 208-4090

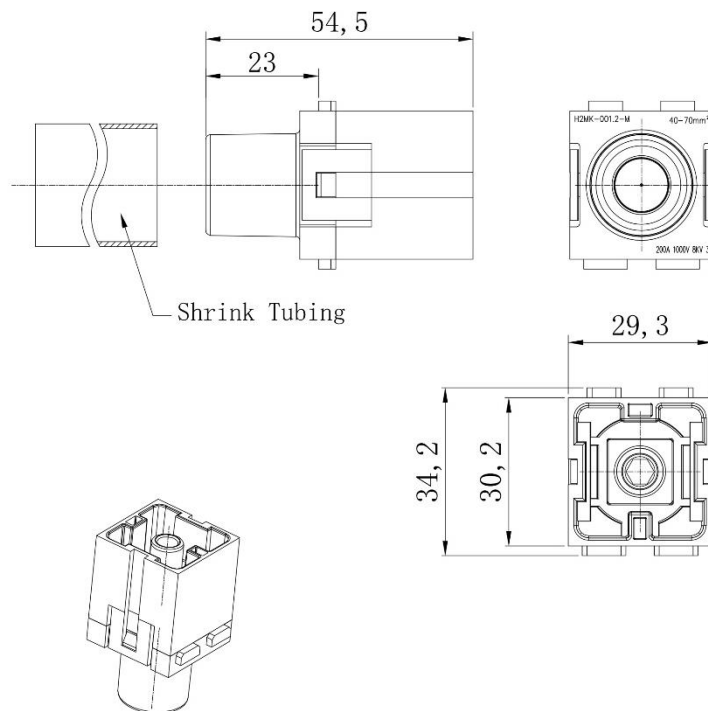


Dimensional line drawings

1 Pole Female Screw 200A 1000V for 40-70mm² Cable Diameter 208-4091

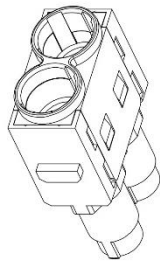
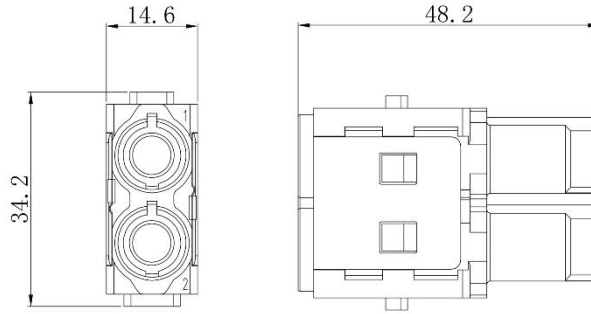


1 Pole Male Screw 200A 1000V for 40-70mm² Cable Diameter 208-4092

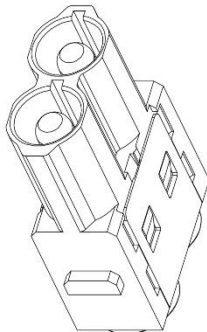
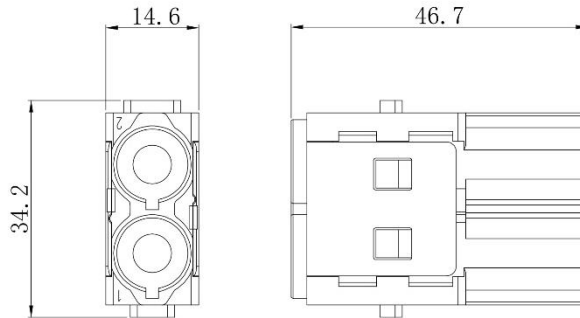


Dimensional line drawings

2 Pole Female Crimp 70A 1000V 208-4602

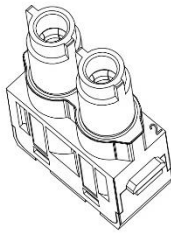
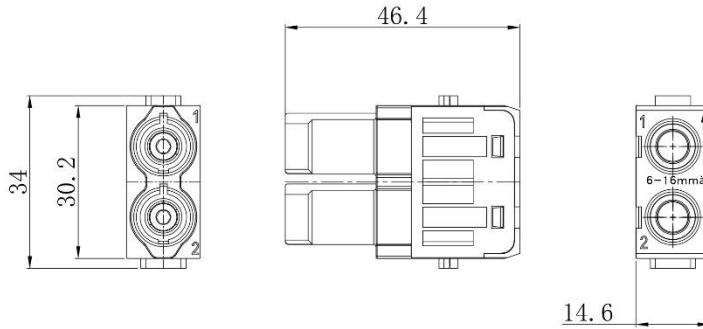


2 Pole Male Crimp 70A 1000V 208-4603

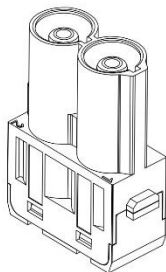
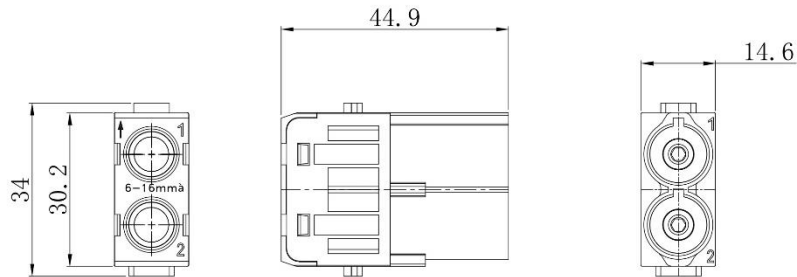


Dimensional line drawings

2 Pole Female Screw 70A 1000V for 6-16mm² Cable Diameter 208-4597

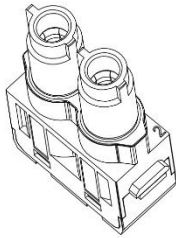
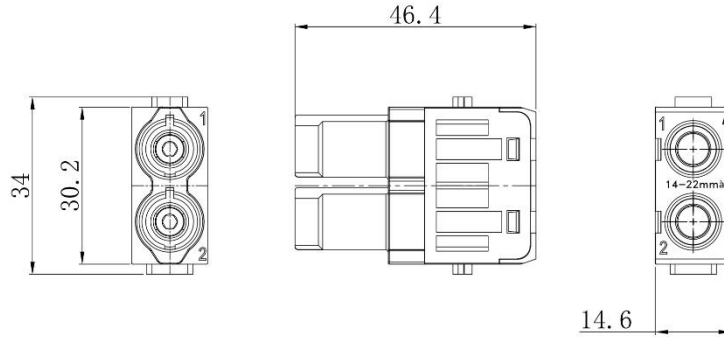


2 Pole Male Screw 70A 1000V for 6-16mm² Cable Diameter 208-4598

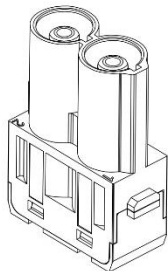
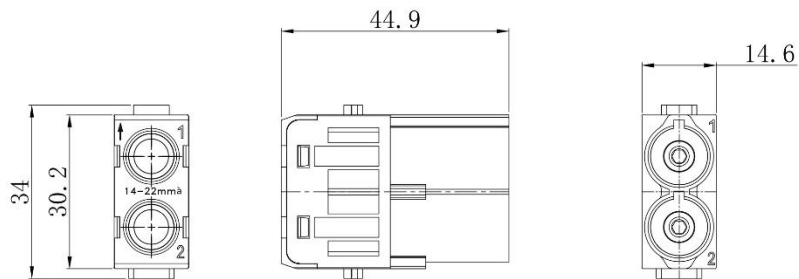


Dimensional line drawings

2 Pole Female Screw 70A 1000V for 14-22mm² Cable Diameter 208-4600

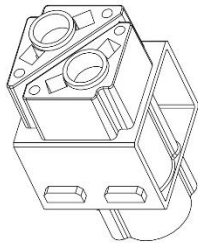
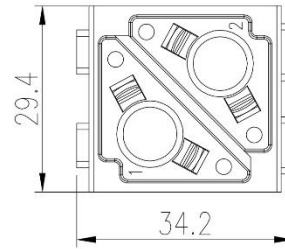
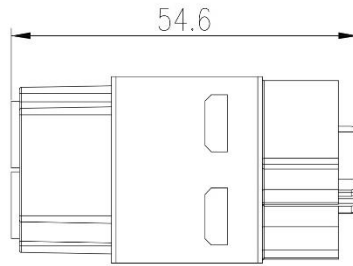


2 Pole Male Screw 70A 1000V for 14-22mm² Cable Diameter 208-4601

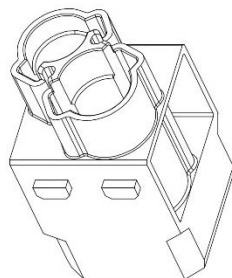
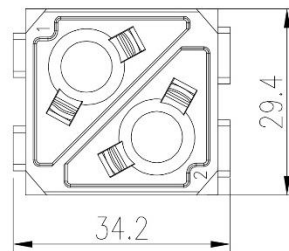
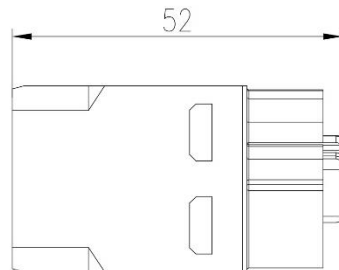


Dimensional line drawings

2 Pole Female Crimp 100A 1000V 208-4100

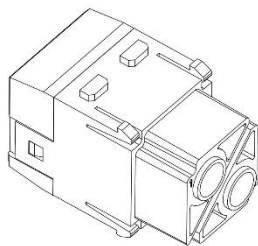
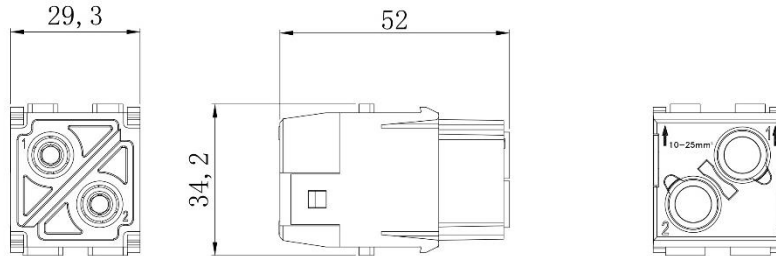


2 Pole Male Crimp 100A 1000V 208-4102

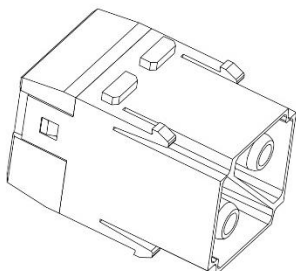
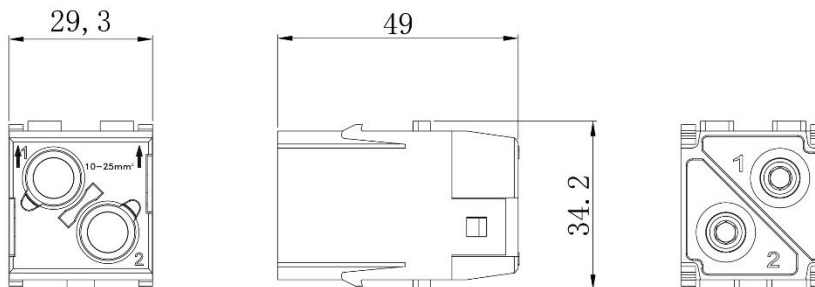


Dimensional line drawings

2 Pole Female Screw 100A 1000V for 10-25mm² Cable Diameter 208-4096

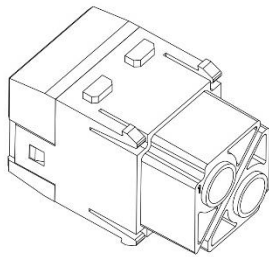
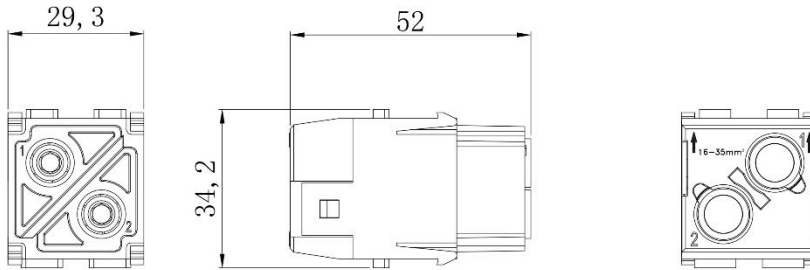


2 Pole Male Screw 100A 1000V for 10-25mm² Cable Diameter 208-4097

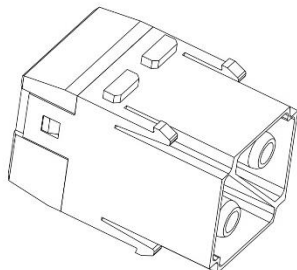
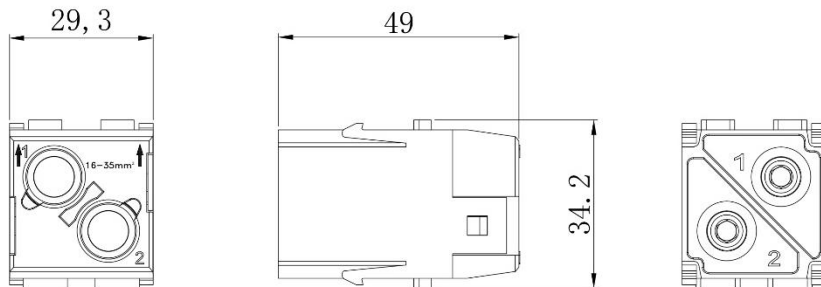


Dimensional line drawings

2 Pole Female Screw 100A 1000V for 16-35mm² Cable Diameter 208-4098



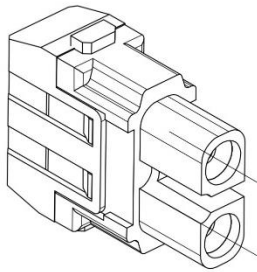
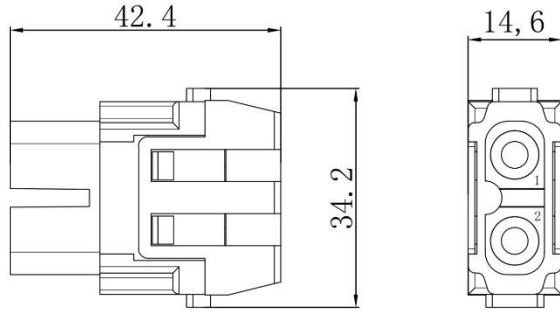
2 Pole Male Screw 100A 1000V for 16-35mm² Cable Diameter 208-4099



Dimensional line drawings

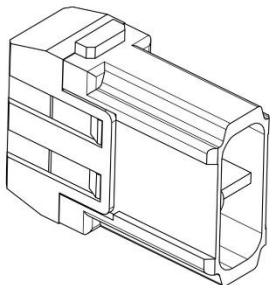
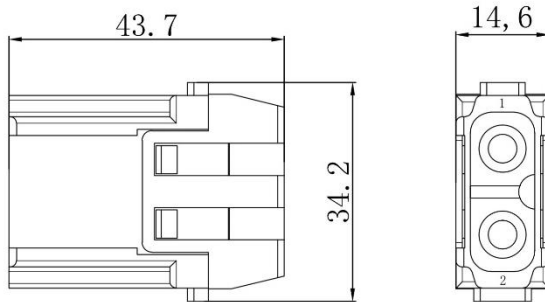
2 Pole Female Crimp 40A 1000V

208-4587



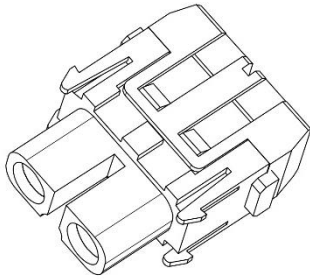
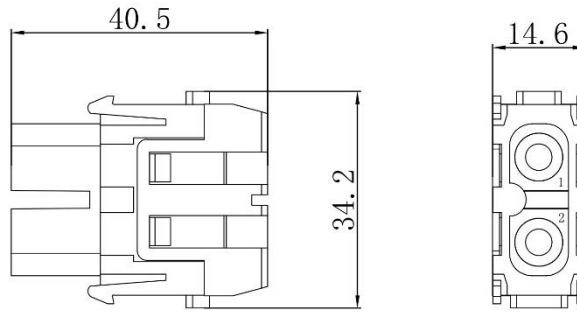
2 Pole Male Crimp 40A 1000V

208-4588

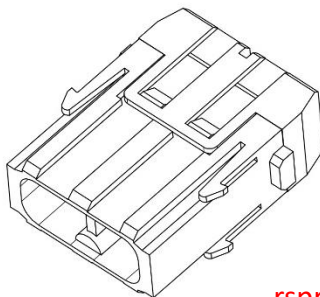
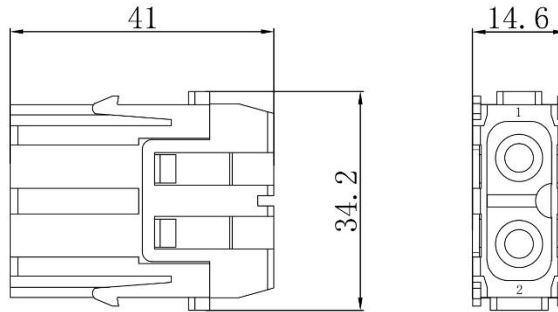


Dimensional line drawings

2 Pole Female Screw 40A 1000V for 2.5-8mm² Cable 208-4582

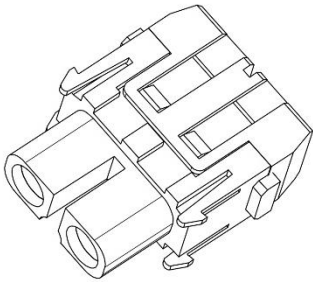
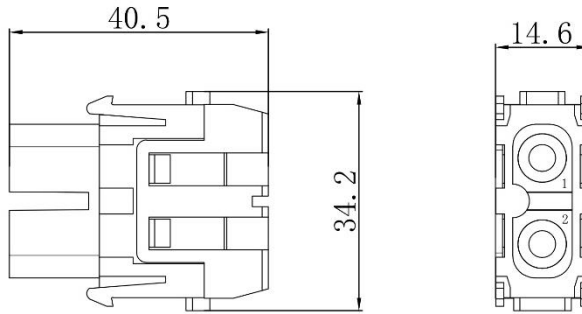


2 Pole Male Screw 40A 1000V for 2.5-8mm² Cable 208-4584

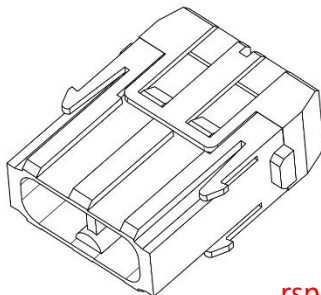
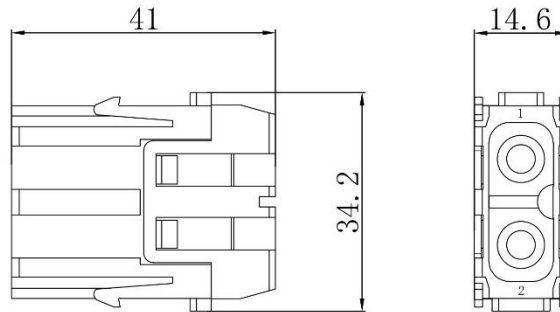


Dimensional line drawings

2 Pole Female Screw 40A 1000V for 6-10mm² Cable 208-4585

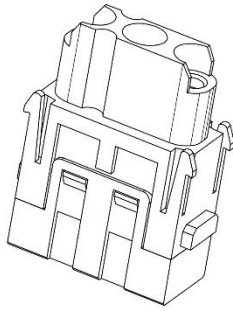
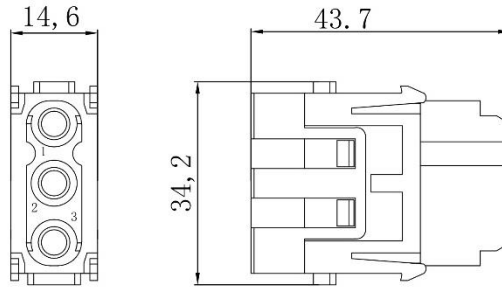


2 Pole Male Screw 40A 1000V for 6-10mm² Cable 208-4586

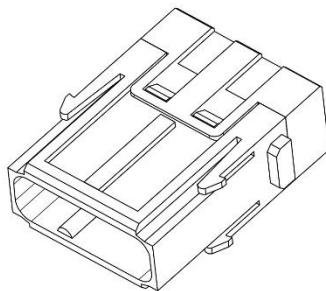
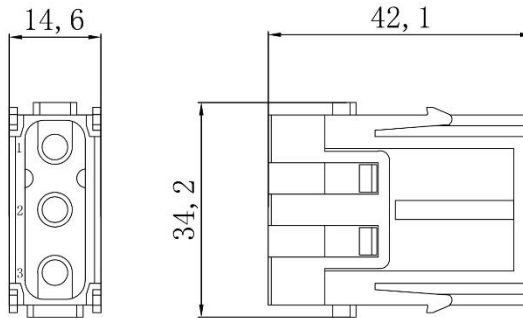


Dimensional line drawings

3 Pole Female Screw 40A 690V for 2.5-8mm² Cable 208-4589

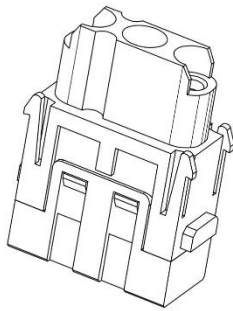
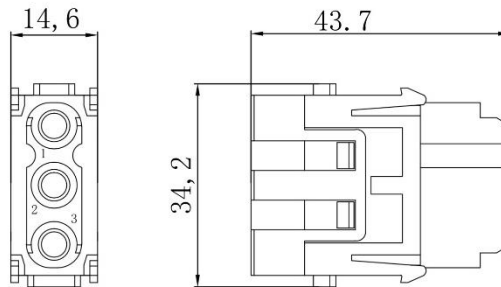


3 Pole Male Screw 40A 690V for 2.5-8mm² Cable 208-4590

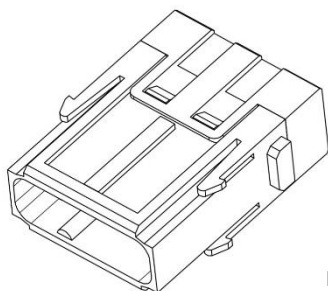
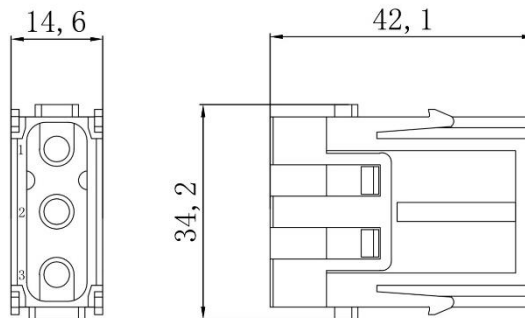


Dimensional line drawings

3 Pole Female Screw 40A 690V for 6-10mm² Cable 208-4591

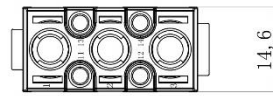
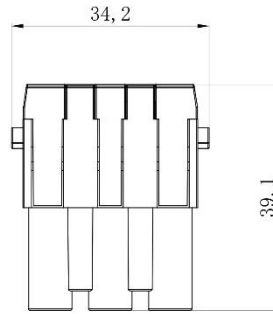
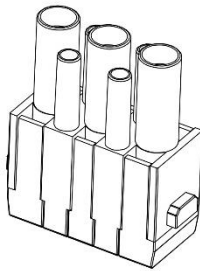


3 Pole Male Screw 40A 690V for 6-10mm² Cable 208-4592

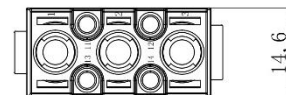
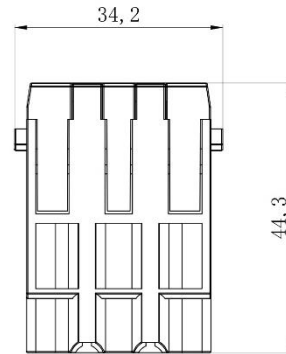
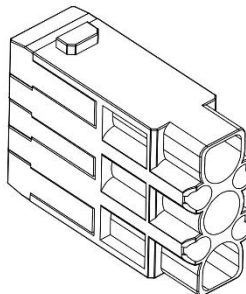


Dimensional line drawings

3+4 Pole Female Crimp 40A/10A 830V 208-4593

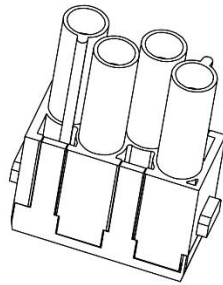
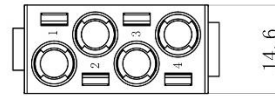
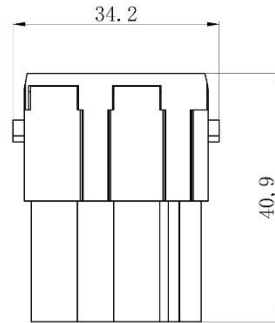


3+4 Pole Male Crimp 40A/10A 830V 208-4594

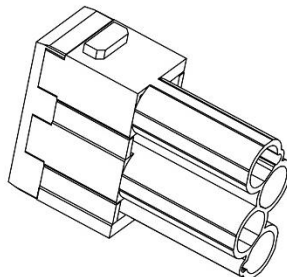
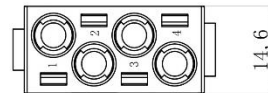
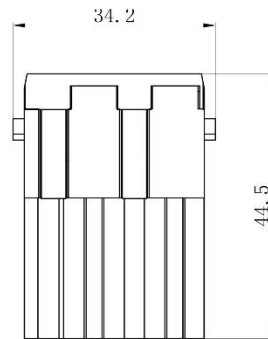


Dimensional line drawings

4 Pole Female Crimp 40A 830V
208-4595

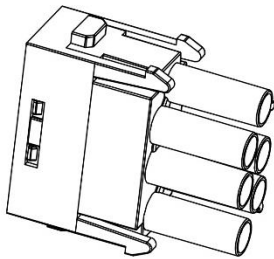
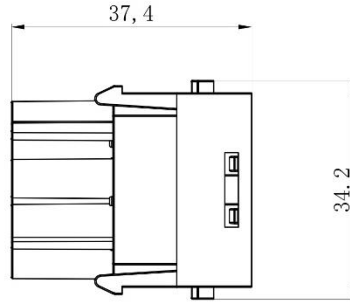
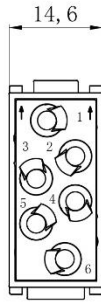


4 Pole Male Crimp 40A 830V
208-4596

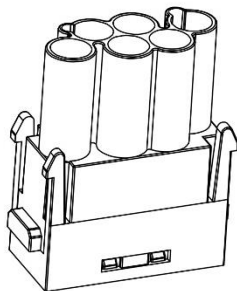
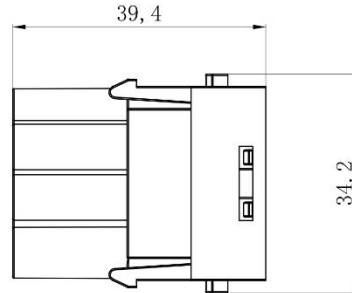
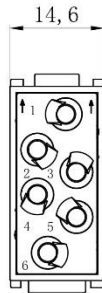


Dimensional line drawings

6 Pole Female Crimp 16A 830V 208-4616

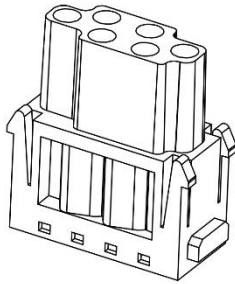
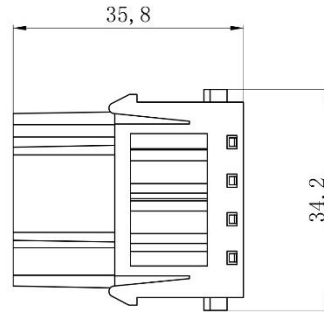
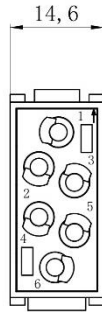


6 Pole Male Crimp 16A 830V 208-4617

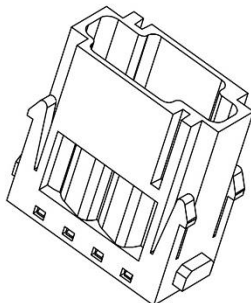
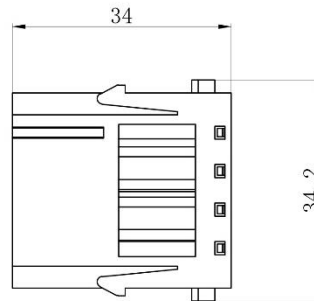
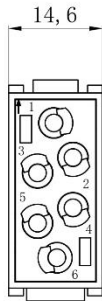


Dimensional line drawings

6 Pole Female Crimp 16A 500V 208-4575

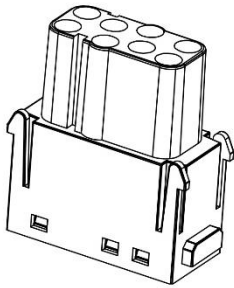
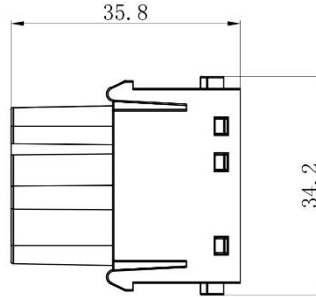
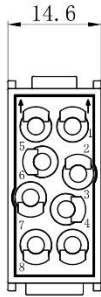


6 Pole Male Crimp 16A 500V 208-4576

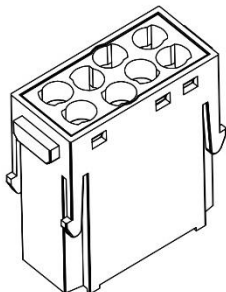
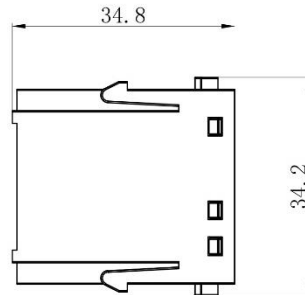
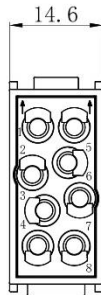


Dimensional line drawings

8 Pole Female Crimp 16A 400V 208-4578

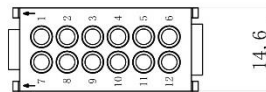
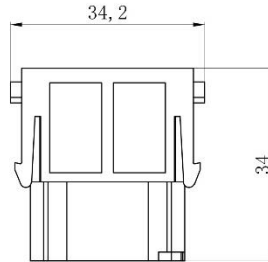
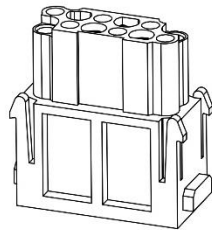


8 Pole Male Crimp 16A 400V 208-4579

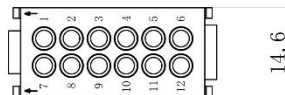
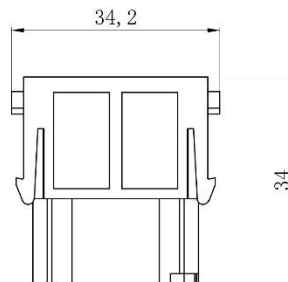
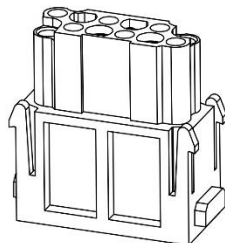


Dimensional line drawings

12 Pole Female Crimp 10A 250V 208-4569

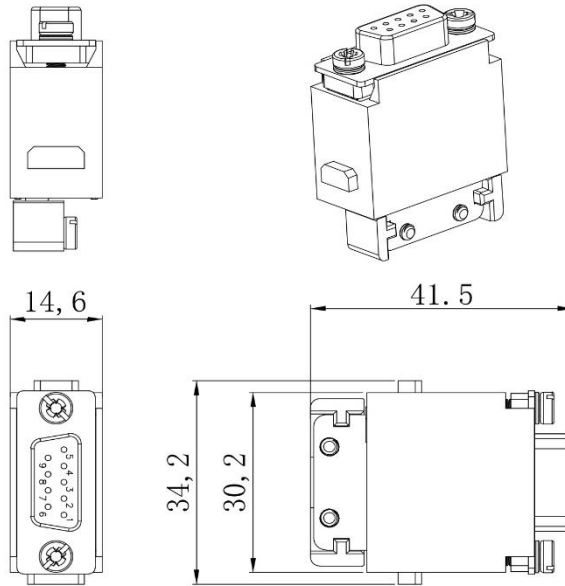


12 Pole Male Crimp 10A 250V 208-4570

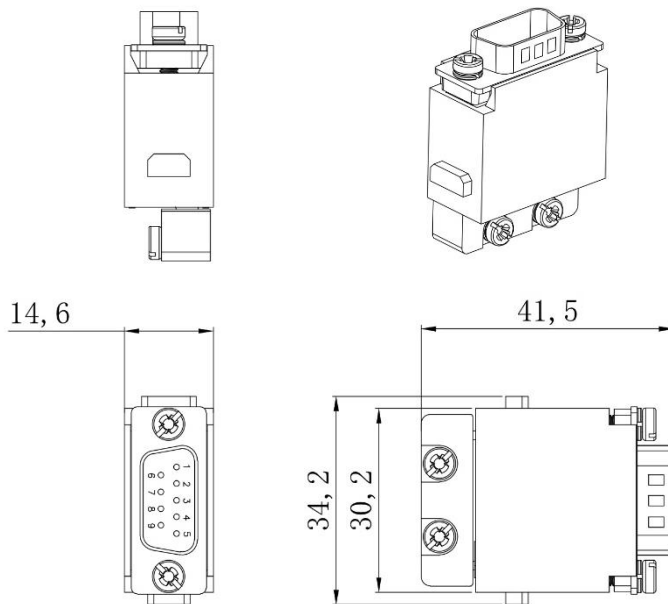


Dimensional line drawings

15 Pole D-sub (VGA) Female Crimp 5A 50V 208-4571

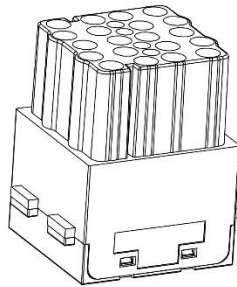
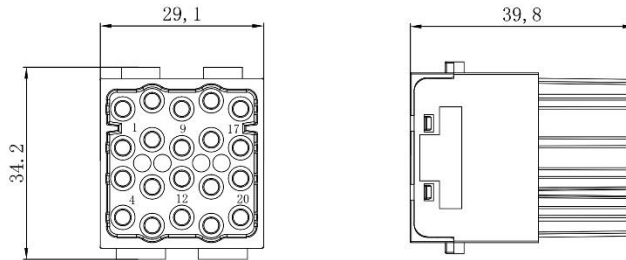


15 Pole D-sub (VGA) Male Crimp 5A 50V 208-4572

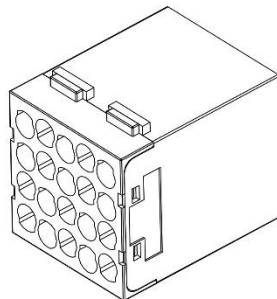
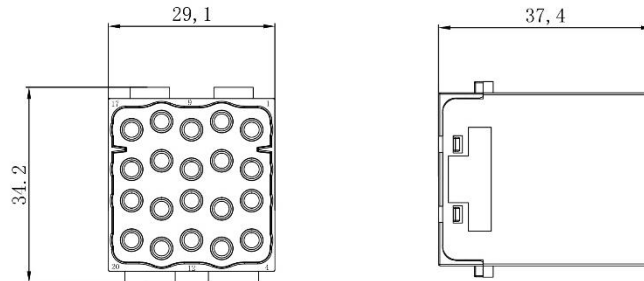


Dimensional line drawings

20 Pole Female Crimp 16A 500V 208-4086

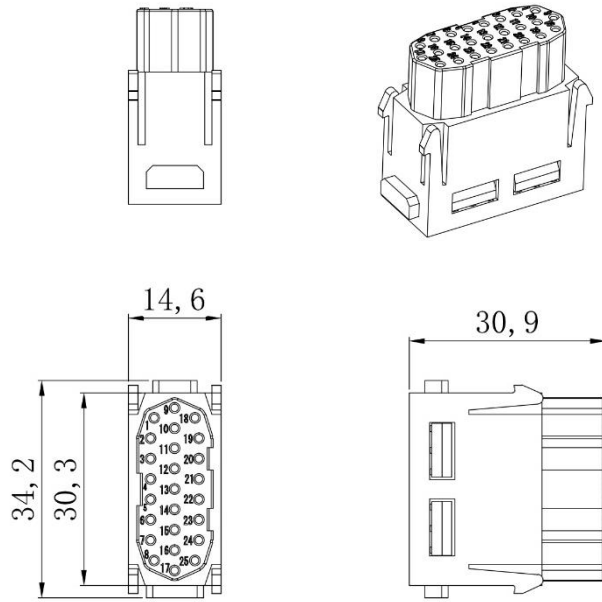


20 Pole Male Crimp 16A 500V 208-4087



Dimensional line drawings

25 Pole Female Crimp 4A 50V 208-4573



25 Pole Male Crimp 4A 50V 208-4574

