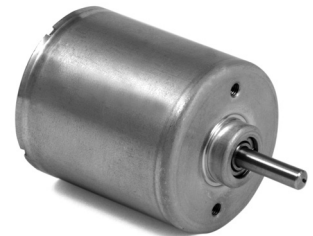


SPECIFICATION

Model		2163788	2163789
1	N° OF POLE	8	8
2	N° OF PHASE	3	3
3	RATED VOLTAGE	V	24
4	RATED SPEED	rpm	4800
5	RATED TORQUE	Nm	0,016
6	MAX PEAK TORQUE	Nm	0,05
7	TORQUE CONSTANT	Nm/A	0,036
8	LINE TO LINE RESISTANCE	Ω	5,1
9	LINE TO LINE INDUCTANCE	mH	3,3
10	NO-LOAD CURRENT	mA	150
11	MAX PEAK CURRENT	A	1,4
12	RATED CURRENT	A	0,44
13	LENGTH	mm	20
14	ROTOR INERTIA	g-cm ²	6
15	WEIGHT	Kg	0,12



CONNECTION

Lead N°	Color	Gauge	Function
1	RED	UL1430 AWG26	VCC HALL SENSOR +5 TO +24 VDC
2	BLUE	UL1430 AWG26	HALL A
3	GREEN	UL1430 AWG26	HALL B
4	WHITE	UL1430 AWG26	HALL C
5	BLACK	UL1430 AWG26	HALL SENSOR GROUND
6	YELLOW	UL1332 AWG24	PHASE U
7	BROWN	UL1332 AWG24	PHASE V
8	ORANGE	UL1332 AWG24	PHASE W

CHARACTERISTICS

Item	
HALL EFFECT ANGLE	120°
SHAFT RUN OUT	0,025 mm
INSULATION CLASS	B
RADIAL PLAY (450 g LOAD)	0,02 mm
AXIAL PLAY (450 g LOAD)	0,08 mm
MAX RADIAL FORCE (10 MM FROM FRONT FLANGE)	15N
MAX AXIAL FORCE	10N
DIELECTRIC STRENGTH	600 VCA FOR ONE SECOND
INSULATION RESISTANCE	100 Mohm min. 500 VDC