



ENGLISH

Datasheet

RS PRO Marine Mount

The marine mount was originally designed for mounting a marine engine taking propeller thrust and now they are extensively used for mobile and static machinery to reduce vibration

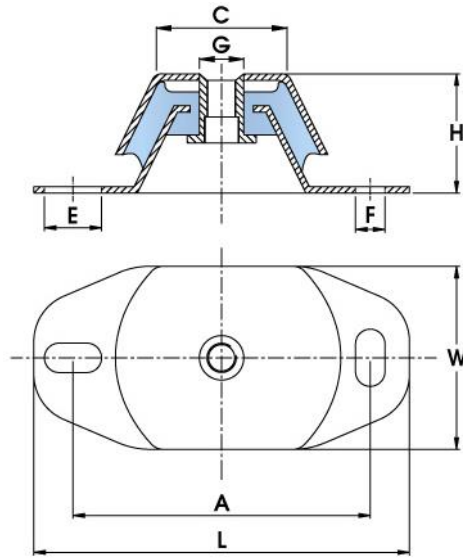


Features:

- Metal top cover protects the rubber element from oil and diesel fuel contamination
- Built-in bump and rebound control feature
- 50% Low stiffness across the mount to vertical stiffness
- Longitudinal stiffness is 2.5 times the vertical and suitable to take engine thrust for marine engines

Applications:

- Static and mobile generator sets
- Pumps
- Compressors
- Marine engine (refer to Technical for mounting thrust and bolt fixing data)



RS Code (mm)	Rubber Hardness (ShA)	A (mm)	L (mm)	W (mm)	C (mm)	E (mm)	F (mm)	G (mm)	H (mm)
1893300	45	100	120	60	60	11x14	11x14	M12	40
1893299	70	100	120	60	60	11x14	11x14	M12	40
1893284	45	140	183	75	75	20x13	13x30	M16	50
1893253	60	140	183	75	75	20x13	13x30	M16	50
1893262	70	140	183	75	75	20x13	13x30	M16	50

RS Code (mm)	Spring Rate (Kg/mm)	Max Longitudinal Thrust (N)	Max Load (Kg)	Max Def'n (mm)	Fixing Holes
1893300	9.3	380	50	5.4	2
1893299	20.8	850	100	4.8	2
1893284	22.7	1000	150	6.6	2
1893253	36.2	1500	210	6.2	2
1893262	84.9	3400	450	5.3	2

