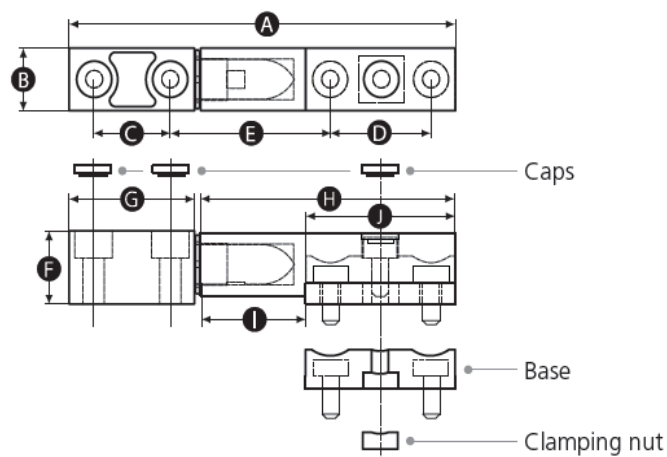


Datasheet

# RS Pro Die Cast Adjustable Removable In-line Lift-off Hinge

RS Stock No: 110-4579



## Material

Die cast zinc

## Finish

Matt

## Colour

Black

Part No.	A	B	C	D	E	F	G	H	I	J	Thread size
1104579	96	15	19	25	40	17.5	31	63	26	37	M5

Part No.	Radial load (Nm)	Axial load (Nm)	Recommended tightening torque (Nm)	Approx. shear force per screw (kN)
1104579	510	1480	1.5	0.28

### Mounting options

**A** Install hinges with matching vertical orientation to enable quick, easy and safe removal of doors without the use of tools.

**B** Install hinges with opposing vertical orientation to enable doors to be permanently mounted.

