

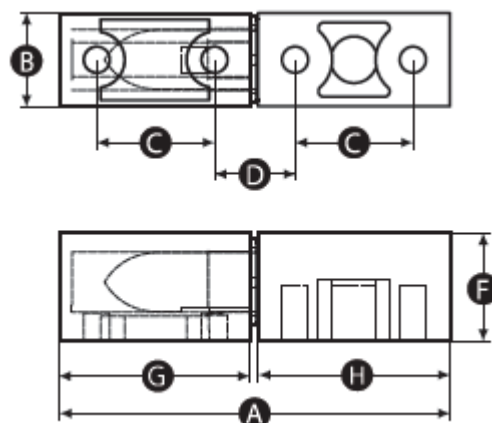


ENGLISH

Datasheet

RS Pro Die Cast Zinc Removable In-line Liftoff Hinge

RS Stock No: 110-4576



Material

Die cast zinc

Finish

Matt

Colour

Black

| Part No. | A | B | C | D | E | F | G | H | Thread size |
|----------|----|----|----|----|---|------|-------|----|-------------|
| 1104576 | 63 | 15 | 19 | 13 | - | 17.5 | 30.75 | 31 | M5 |

| Part No. | Radial load (Nm) | Axial load (Nm) | Recommended tightening torque (Nm) | Approx. shear force per screw (kN) |
|----------|------------------|-----------------|------------------------------------|------------------------------------|
| 1104576 | 400 | 1150 | 1.5 | 0.28 |

Mounting options

A Install hinges with matching vertical orientation to enable quick, easy and safe removal of doors without the use of tools.

B Install hinges with opposing vertical orientation to enable doors to be permanently mounted.

