

Other Accessories

Fiber Optics

FOC Fiber Optic Patch Cords

A variety of patch cords allow you to test a different type of cable

- FOC-ST/ST, FOC-ST/FC, FOC-ST/SC, FOC-ST/SMA, FOA-ST/STA-Fiber Optic Coupler for FOC-ST/ST Patch Cords

FOM Fiber Optic Meter

The Fluke Fiber Optic Meter (FOM) helps you test and maintain fiber optic cable without having to buy a whole new meter. Plug the FOM directly into any DMM with a mV dc function and a 10 MΩ input impedance and quickly and accurately verify fiber optic cable system loss. Light sources and patch cords sold separately.



FOS 850 & FOS 850/1300 Fiber Optic Light Sources

A variety of light sources allow you to test different cable lengths.

Pressure Module

PV350 Pressure Vacuum Module

- Compatible with all Fluke and most popular DMMs
- Digital pressure and vacuum measurements in a single module
- Transducer sealed in 316 stainless steel compatible with variety of liquids and gases
- Measures vacuum to 76 cm Hg
- Displays results in English (psig of Hg) or metric (kPa or cm Hg) units
- Measures pressure to 500 psig (3447 kPa)



Probe Light and Extender

L200 Probe Light

- Attaches to any Fluke test probe
- Bright white LED
- 120 hours of battery life



L210 Probe Light + Probe Extender

- Includes L200 Probe Light and TP280 Test Probe Extenders
- 20 cm probe extenders keep hands away from live circuits
- Extender fits between modular test probe and test lead (total reach 30 cm)



L215 SureGrip™ Kit with Probe Light and Extender

- L200 Probe Light
- TP280 20 cm Test Probe Extenders
- TP220 SureGrip Test Probes
- TL224 SureGrip Silicon Test Lead Set
- Foldable soft pouch with six pockets and hook-and-loop

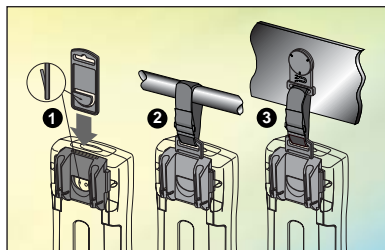


Hanging & Locking Kits

ToolPak

The meter hanging solution

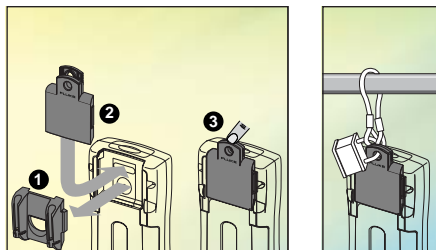
- Kit includes, universal hanger clips (2), hook & loop straps (2 lengths) and strong magnet
- Combine components to meet most hanging needs
- Attaches to back of a 110/170/180 Series meter, 20/70 -III with integrated holster (with adapter), 724/725/789 and 50 Series II



LockPak

The meter locking solution

- Kit includes a locking accessory
- Attaches to back of a 187/189 meter or 724/725/789 to help deter theft
- Accepts most common locks (not included)



Retrofit Kit

87-Retrofit Retrofit Kit for Fluke 83, 85, 87-III and 787 meters

Refurbish your 80 Series meter with :

- C81Y holster
- DR80 Meter Display Upgrade Kit
- TL71 Test Lead Set
- AC72 Alligator Clip Set (1000 V)
- F1 & F2 Replacement Fuses
- MeterCleaner™ Wipes



All accessories have a one year warranty