

## FEATURES

- Straight body orientation
- Metal housing material
- Female port with 25 contacts
- 0.8 $\mu$ m selective gold-plated pins
- Current rating of 1 A
- Dimensions of 18.2mm x 12.55mm
- Minimum operating temperature of -55°C
- Maximum operating temperature of +85°C
- RoHS (Restriction of Hazardous Substances) compliant
- IDC (insulation displacement contact) termination
- Low profile metal body construction

## RS PRO 25 Way Cable Mount D-sub Connector Socket, 2.77mm Pitch

RS Stock No.: 642-4913



RS Professionally Approved Products bring to you professional quality parts across all product categories. Our product range has been tested by engineers and provides a comparable quality to the leading brands without paying a premium price.

### Product Description

This 25-way cable-mount D-Sub connector socket is typically used in electrical engineering and computing. It allows connections on circuit boards between insulated and ribbon cables and can terminate signals safely and effectively.

It has a metal casing and can operate safely at temperatures between -55°C and +85°C. With its nine contacts, it can provide a steady connection. This is helped further by the 0.8 µm selective gold-plated pins that allow the connector to conduct signals efficiently at a 1 A current rating. The connector has a straight body orientation and one female entry port. It is also compact in design so requires little room.

### General Specifications

<b>Number Of Contacts</b>	25
<b>Gender</b>	Female
<b>Body Orientation</b>	Straight
<b>Mounting Type</b>	Cable Mount
<b>Termination Method</b>	IDC
<b>Housing Material</b>	Metal
<b>Contact Plating</b>	Gold
<b>Number Of Positions</b>	25
<b>Number Of Rows</b>	2
<b>Applications</b>	Networking and communications equipment

### Electrical Specifications

<b>Current Rating</b>	1A
-----------------------	----

**Mechanical Specifications**

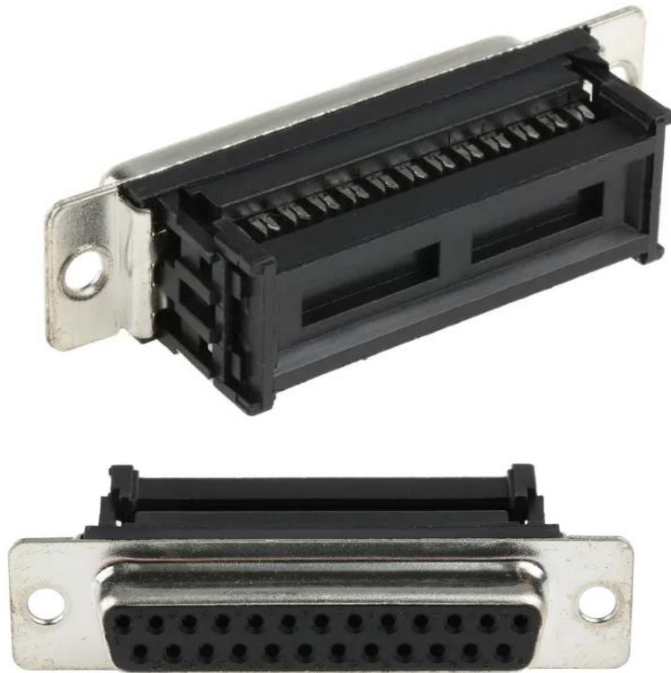
<b>Dimensions</b>	18.2mm x 12.5mm
<b>Pitch</b>	2.77mm
<b>Width</b>	18.2mm
<b>Depth</b>	12.55mm
<b>Shell Plating</b>	Tin

**Operation Environment Specifications**

<b>Maximum Operating Temperature</b>	+85°C
<b>Minimum Operating Temperature</b>	-55°C

**Approvals**

<b>Compliance/Certifications</b>	RoHS (Restriction of Hazardous Substances) compliant
----------------------------------	--



Dimensions:

