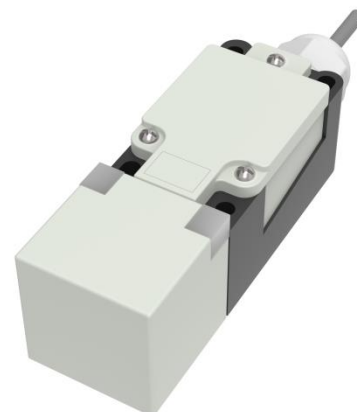


# RS PRO Inductive Sensor

RS Stock No.: 2522025

## FEATURES

- Non contact detection, safe and reliable;
- ASIC design;
- Perfect choice for metallic target detection;
- Full range specifications optional;



RS Professionally Approved Products bring to you professional quality parts across all product categories. Our product range has been tested by engineers and provides a comparable quality to the leading brands without paying a premium price.

### Specifications

<b>Mounting</b>	Flush
<b>Rated distance Sn</b>	15mm
<b>Assured distance Sa</b>	0...12mm
<b>Dimensions</b>	40*40*140 mm
<b>Output</b>	NO/NC
<b>Supply voltage</b>	20...250 VAC /DC
<b>Standard target</b>	Fe 45*45*1t
<b>Switch point offset[%/Sr]</b>	≤ ±10%
<b>Hysteresis range [%/Sr]:</b>	1...20%
<b>Repeat accuracy</b>	≤3%
<b>Load current</b>	AC: ≤300mA DC: ≤100mA
<b>Residual voltage</b>	AC: ≤10V DC: ≤8V
<b>Leakage current t[lr]</b>	AC: ≤3mA DC: ≤1mA
<b>Protection circuit:</b>	...
<b>Output indicator:</b>	Power: yellow LED Output: yellow LED
<b>Ambient temperature</b>	-25°C...70°C
<b>Ambient humidity</b>	35-95%RH
<b>Switch frequency</b>	AC:20 Hz, DC: 100 Hz
<b>Voltage withstand</b>	1000V/AC 50/60Hz 60s
<b>Insulation resistance</b>	≥50MΩ (500VDC)
<b>Vibration resistance</b>	10...50Hz(1.5mm)
<b>Housing material</b>	PTB
<b>Connection</b>	Terminal

### Protection Category

**IP Rating** IP67

### Additional Information

**Custom Tariff Number/HS code** 903180

### Approvals

**Compliance/Certifications** CE

**Dimension and Wiring**