

# Bore Gages

## SERIES 526 — for Extra Small Holes

These Bore Gages measure diameters of small holes. The radial displacement of split-ball contact is converted to axial displacement of measuring rod, which is shown on the dial indicator.

### FEATURES

- Optional stand (215-120M) is available for efficient measurement of multiple small holes.



526-172



526-127

### SPECIFICATIONS

| Metric        |                 |                 |
|---------------|-----------------|-----------------|
| Range         | Order No.       | Probe depth (D) |
| 0.95 - 1.55mm | <b>526-172*</b> | 11.5mm          |
| 1.5 - 4mm     | <b>526-162*</b> | 17.5, 22.5mm    |
| 3.7 - 7.3mm   | <b>526-152*</b> | 32mm            |
| 7 - 10mm      | <b>526-124</b>  | 56mm            |
| 10 - 18mm     | <b>526-125</b>  | 62mm            |
| 0.95 - 1.55mm | <b>526-173*</b> | 11.5mm          |
| 1.5 - 4mm     | <b>526-163*</b> | 17.5, 22.5mm    |
| 3.7 - 7.3mm   | <b>526-153*</b> | 32mm            |
| 7 - 10mm      | <b>526-126</b>  | 56mm            |
| 10 - 18mm     | <b>526-127</b>  | 62mm            |

| Inch          |                 |                 |
|---------------|-----------------|-----------------|
| Range         | Order No.       | Probe depth (D) |
| .037" - .061" | <b>526-176*</b> | .45"            |
| .06" - .155"  | <b>526-166*</b> | .68", .88"      |
| .145" - .29"  | <b>526-156*</b> | 1.25"           |
| .3" - .4"     | <b>526-122</b>  | 2.2"            |
| .4" - .7"     | <b>526-123</b>  | 2.4"            |
| .3" - .4"     | <b>526-119</b>  | 2.2"            |
| .4" - .7"     | <b>526-120</b>  | 2.4"            |

\*Provided with setting rings

0.001" graduation (w/ 29235B-10)

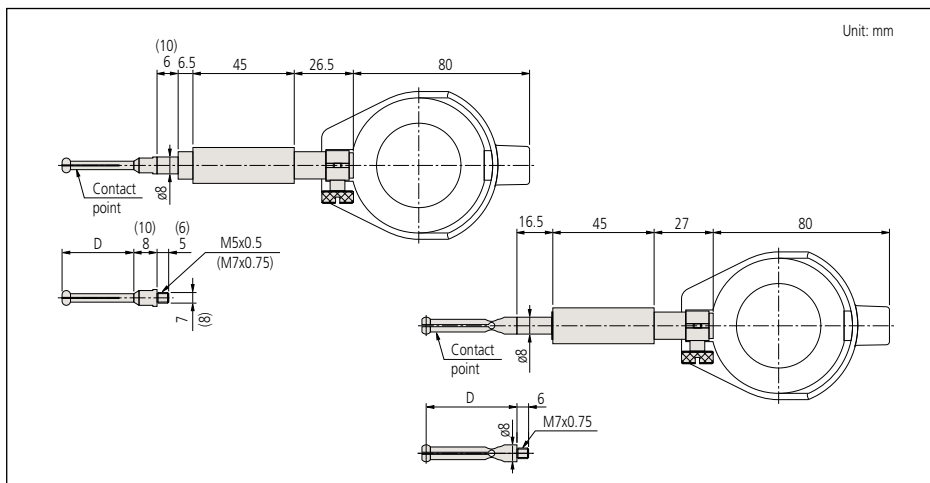
.0005" graduation (w/ 29225B)

\*Provided with setting rings

0.001mm graduation (w/ 21095B-10)

0.01mm graduation (w/ 20465B)

### DIMENSION



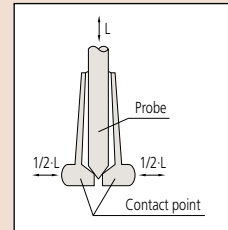
### Technical Data

Accuracy: 4µm

Repeatability: 2µm

Graduation: 0.01mm, 0.001mm, .0005 or .00001"

### Contact Point



### Optional Accessory

Setting ring (See page 122.)

215-120M: Bore gage stand

