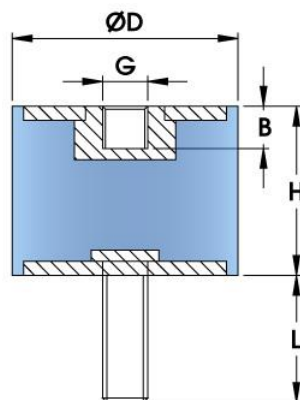


Datasheet

RS PRO Cylindrical Male – Female Anti Vibration Mounts

A simple and cost-effective mount using made from natural rubber and Zinc plated mild steel. For use in compression and shear. A Very large range of available size and studs. Please note that thread depth 'B' is same as the thread size, i.e. M3 stud will have a 3mm deep (B) female metal fixing.



H – Height
D – Diameter
G – Thread Size
L – Stud Length
B - Thread Depth

RS Code	Rubber Hardness	Diameter (mm)	Height (mm)	G X L (mm)	Max Compression Load (KG)	Max Shear Load (KG)
1893258	45	30	30	M8X20	52.91	17