

FEATURES

- RoHS compliant
- REACH compliant
- Silicon free

RS PRO INTERNAL SUPPORT BUSH

RS Stock No.: 2305180



RS PROfessionally Approved Products bring to you professional quality parts across all product categories. Our product range has been tested by engineers and provides a comparable quality to the leading brands without paying a premium price.

Product Description

The RS PRO internal support bush is made up of brass material. It is water, oil, compressed air compatible. Operating temperature range is from - 60 °C + 300 °C.
The working pressures and working temperatures depend on which type of tube is used, for this reason, the values must be determined in accordance with the tube's features.

General Specifications

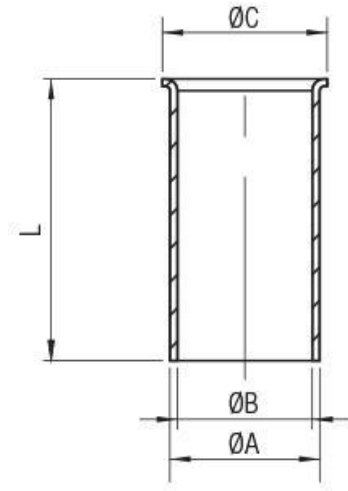
Application	Pneumatic Automation, Automotive, Textile, Packaging, Compressed Air Circuit, Vacuum
--------------------	--

Mechanical Specifications

Compatible Pipe Size	2.7mm to 4mm
Maximum Working Pressure	148.4bar
Tube Size	4/2.7in
Tube Internal Diameter	2.1mm
Tube Outer Diameter	2.7mm
Length	13mm

Approvals

Approvals	RoHS & REACH compliant
------------------	------------------------



Tube	A	B	C	L	Pack.
4/2.7	2.7	2.1	3.7	13	10