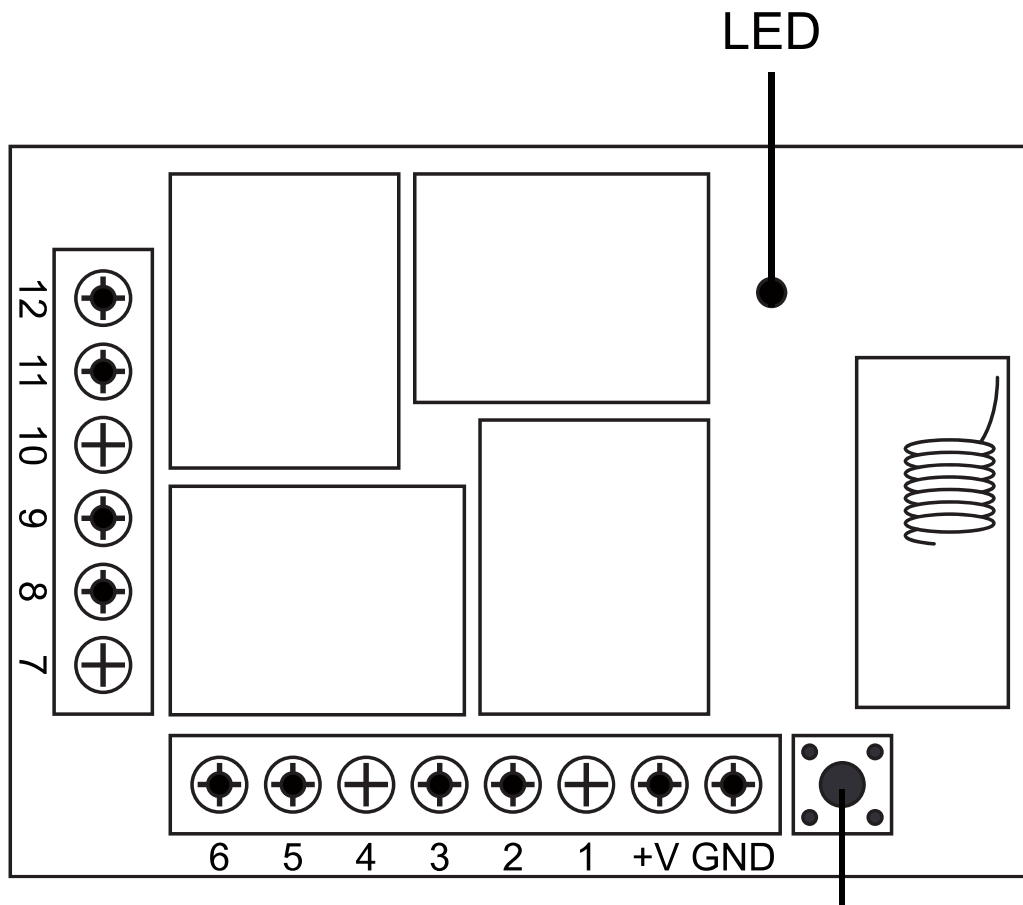


12V 4CHANNEL REMOTE CONTROL SWITCH INSTRUCTION

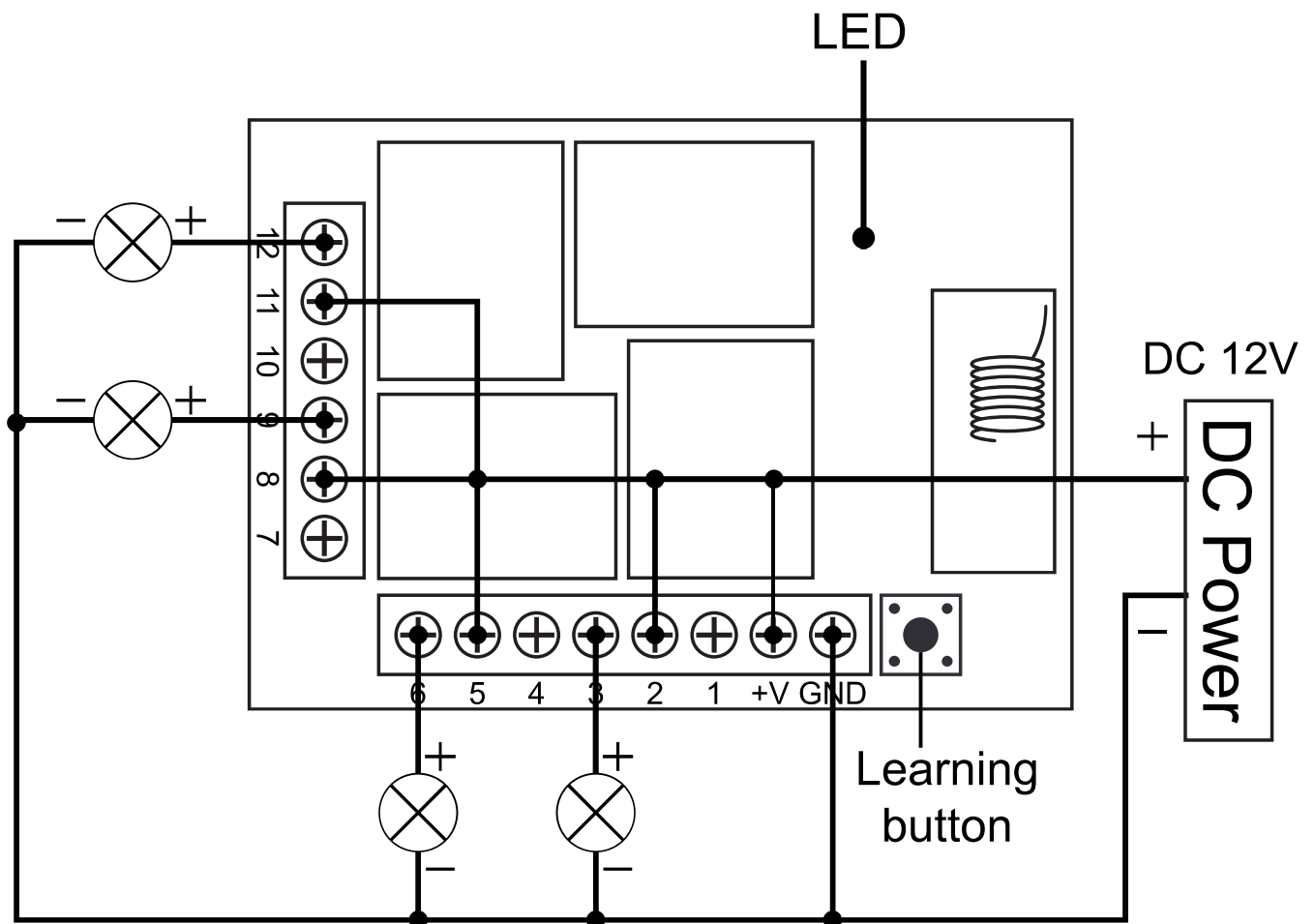


⊗	:	Light
+/+V	:	Power positive
-/GND	:	Power negative
NC/Normally closed	:	1 4 7 10
NO/Normally open	:	3 6 9 12
COM/Public port	:	2 5 8 11

Learning
button

WIRING DIAGRAM

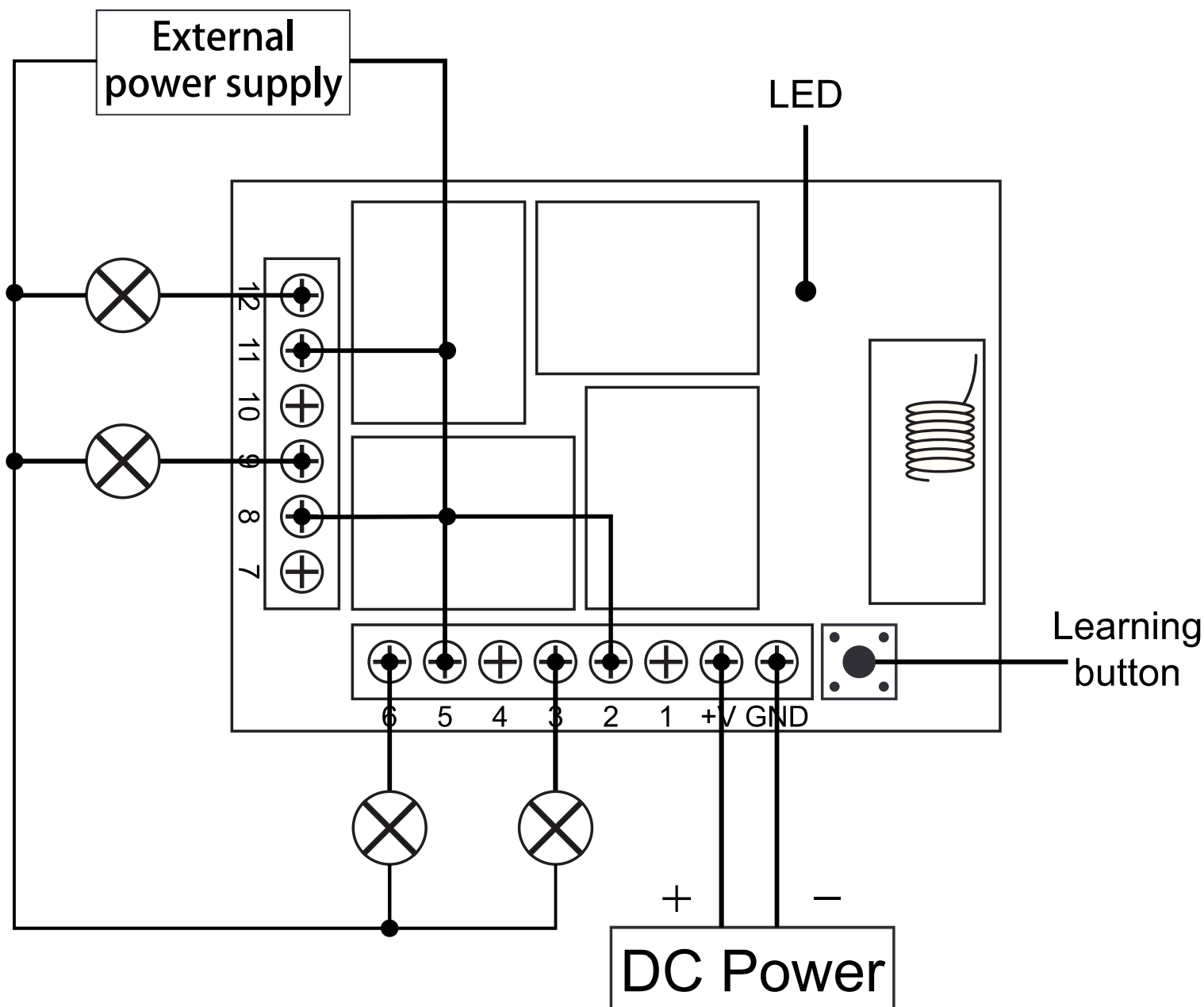
DC lamp wiring diagram



***Please Don't install with electricity**

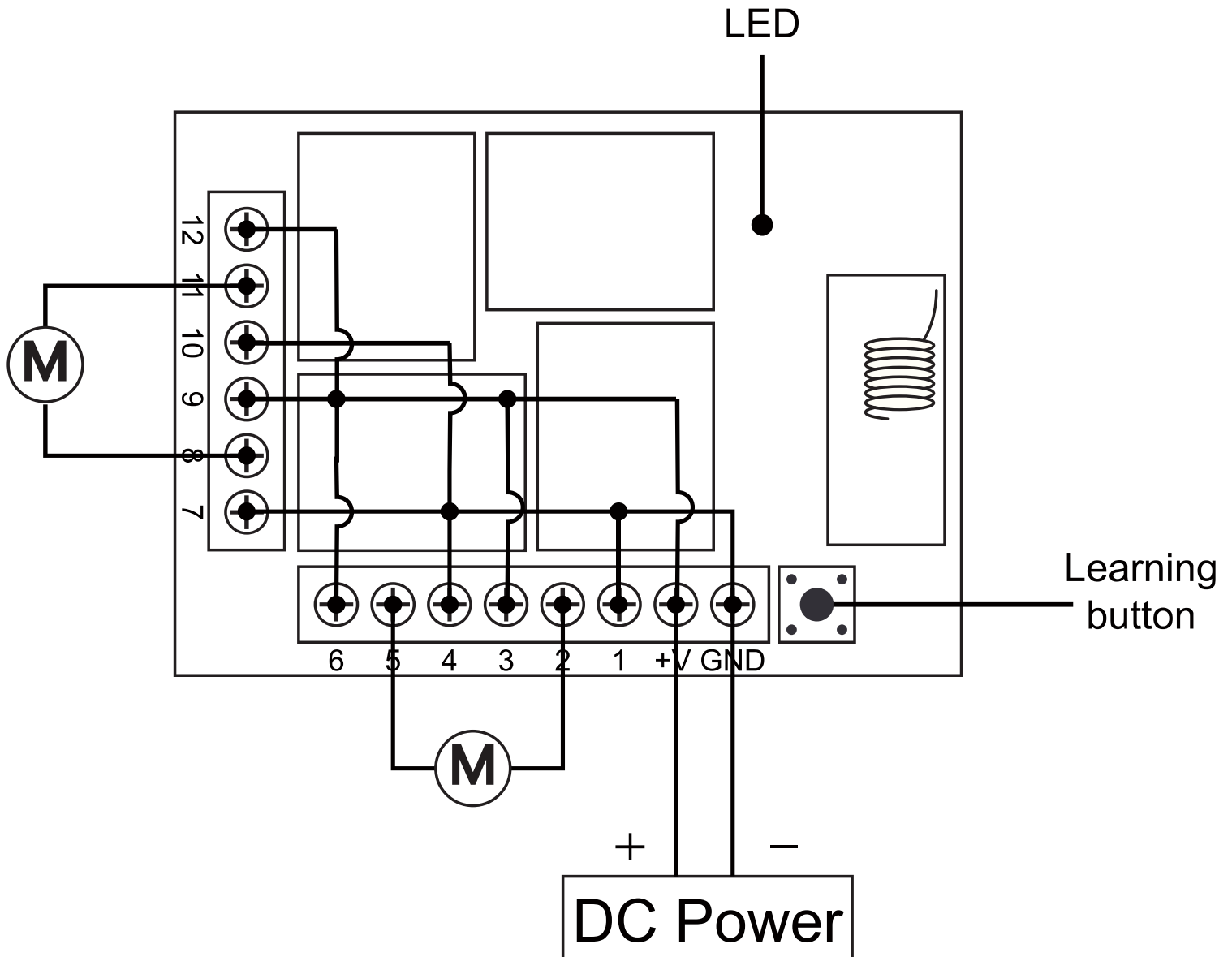
External power control lamp wiring diagram

External power supply can be connected to any voltage



***Please Don't install with electricity**

Wiring diagram of two DC motors



***Please Don't install with electricity**

Function description and setting method

* Note: All the following working modes need to be implemented with QIACHIP brand remote control (transmitter) and controller (receiver / wireless remote control switch). There is no guarantee that remote controls from other brands will work properly.

Reset function:

Clear all matched remotes. When the data is cleared, all remote control can't make receiver work.

Settings reset:

After pressing the receiver's learning button 8 times, the receiver clears all remote control data in its memory. When the receiver's LED flashes, the reset function is complete.

Description of the three working modes :

Working modes: 1) Momentary; 2) Toggle; 3) Latching.

1) Momentary mode:

After successful pairing in this mode, press and hold the remote control button (such as A), the corresponding relay on the receiver is turned on; release the remote control button (such as A), and the corresponding relay on the receiver is turned off;

2) Toggle mode:

After successful pairing in this mode, press the remote control button (such as A) to turn on the corresponding

relay on the receiver; press the remote control button (such as A) again to turn off the corresponding relay on the receiver;

3) Latching mode:

After successful pairing in this mode, press the remote control button (such as A), the receiver relay corresponding to A is turned on; press the remote control button (such as B), the relay on the receiver corresponding to A is turned off, and the receiver corresponding to B is turned on the relay is open. And so on, press the remote control A and B at the same time, the receiver will turn off.

How to set the working mode of the switch controller?

Note: The working mode can only be set when the LED indicators of the switch controller are lit.

Set Momentary mode (Jog):

Step 1) Press the receiver's learning button once. Wait for the LED on the receiver to light up and enter the setting state.

Step 2) Press the button on the remote control (eg button A) once. The LED on the receiver will flash and then turn off. The jog mode is set successfully.

Set Toggle Mode:

Step 1) Press the learning button on the receiver twice. Wait for the LED on the receiver to light up and enter the setting state.

Step 2) Press the button on the remote control (eg button A) once. The LED indicator on the receiver will flash and then turn off. The self-locking mode is set successfully.

Set Latching Mode:

Step 1) Press the learning button on the receiver 3 times.

Wait for the LED on the receiver to light up and enter the setting state.

Step 2) Press the button on the remote control (such as button A) once. The LED on the receiver will flash and then turn off, and the interlock mode is set successfully.

TECHNICAL DATE

Input Power	DC12V
RF Frequency	315MHZ/433.92MHZ
Standby Current	5mA
Match Way	Learning button
Receiver sensitivity	-104dbm
Operation mode	Momentary,Mode,Toggle, Mode,Toggle Mode
Output	NO , NC , COM,+V,GND
Support Encoding Chip	Learning Code 1527
Working temperature	-10 ~ +80°C
Size	68.2x48.2 (mm)