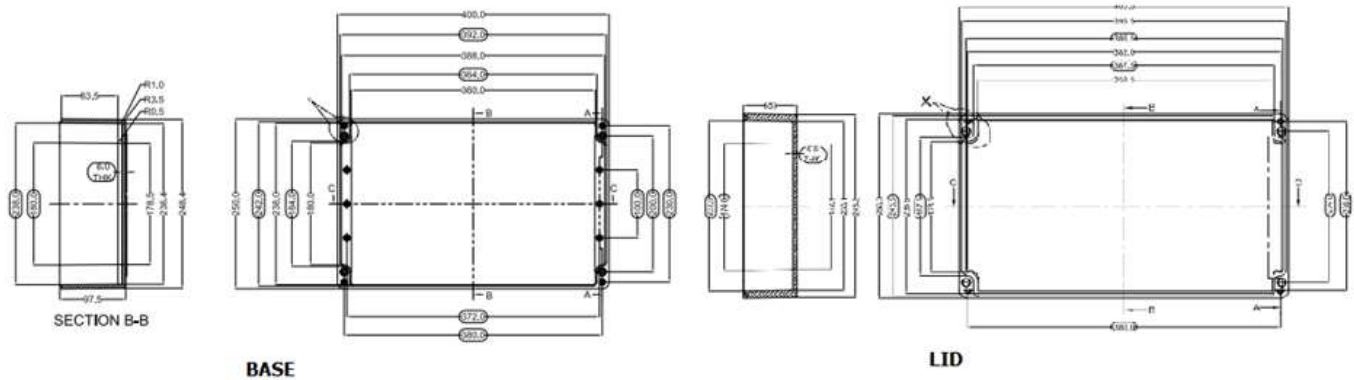


# Datasheet

ENGLISH

## RS PRO Black Fibreglass Reinforced Polyester Enclosure

Stock No: 190-4280



PRODUCT SPECIFICATION - STANDARD	
Dim (LxWxH):	400 x 250 x 160
Model No:	
Order No :	



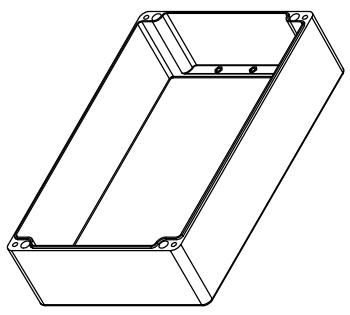
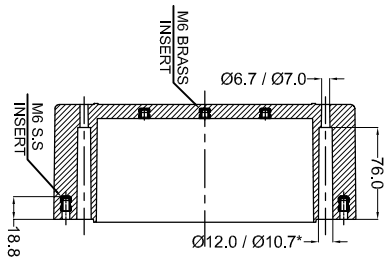
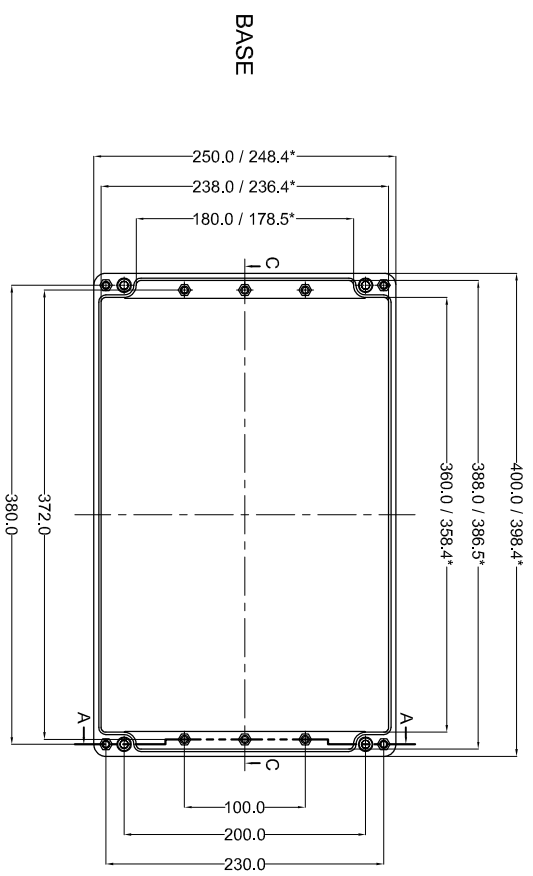
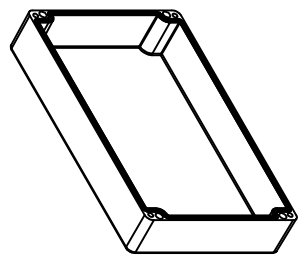
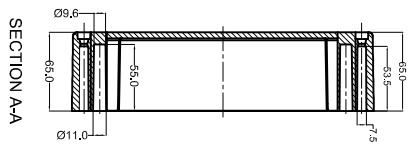
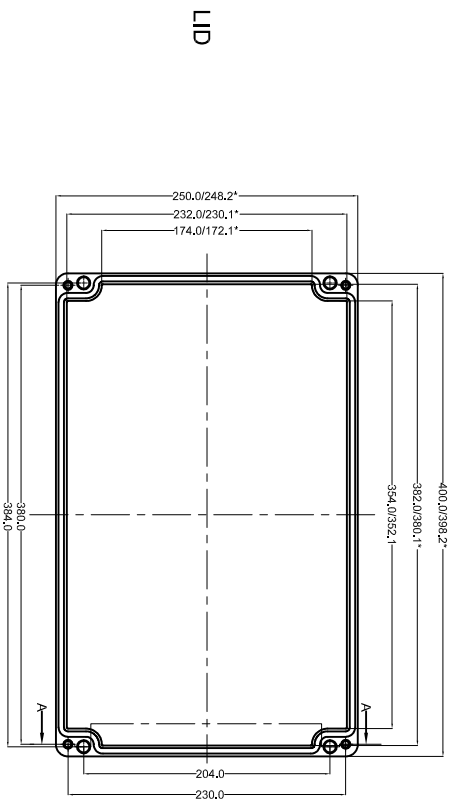
TECHNICAL SPECIFICATION	GREY	BLACK
Colour	RAL 7000	Similar to RAL 9011
Material	Glass Fiber Reinforced Polyester	Glass Reinforced Polyester - Graphite Added
Gasket:	Neoprene	Silicone
Surface Resistance	> 10 <sup>12</sup> Ohm	< 10 <sup>9</sup> Ohm
Service Temperature	- 40°C to +80°C	-60°C to +110°C
Lid Screw	Captive Screw - SS1.4301 (A2) – M6	
Tightening Torque:	3-4 Nm	
Protection	IP 66, EN 60529	
Impact Strength	Impact Energy > 7 Joules, EN 60079	
Flammability	Self Extinguishing, UL 94 V0	
Process Control System	ISO 9001 - 2015, IEC 80079 - 34 - 2011	

AVAILABLE ON DEMAND	
DIN Rail	TS35
Mounting Plate	Yes
External Mounting Brackets	Yes
Hinges	No
Alter Lid Screw	Yes
Sealable Lid screw	Yes

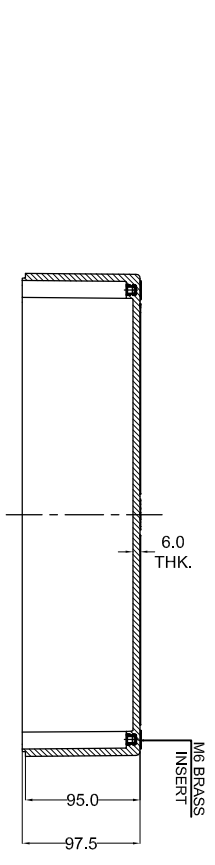


\* = Conical form tapering downward.  
 Untoleranced dimensions per DIN 16901-140

OPTIONAL ACCESSORIES		
PART NAME	QTY	AVAILABILITY
MOUNTING PLATE	1	Y
EXTERNAL HINGE	1	Y
INTERNAL HINGE	-	N
MOUNTING BRACKETS	4	Y
NEOPRENE/SILICON GASKET	1	Y
DIN RAIL TS15	-	N
DIN RAIL TS35	1	Y



rspro.com



SECTION C-C

SECTION A-A

Sr.No.	Drawing no.	RM Grade	Finish
2	GRP-30	BLACK RAL9011	
1	GRP-23	GREY RAL7000	

NO. / REV. NO.	DESCRIPTION	DATE	DRAWN	CHECKED

QUANTITY	MATERIAL :-	MACH. NAME	DATE	SIGN	NAME
	<b>GRP</b>		09/01/14		RS PL DESIGN
			09/01/14		MANOJ DRAVIN
					PAVAN CHECKED
					M.S. APPROVED

TOLERANCE	WEIGHT	FINISH	SCALE	PART NO.	DRG. NO.
±0.2			1:1		
±0.2 HOLES					
±1.0° ANGLES					

TITLE :-	
GRP JUNCTION BOX	
400 x 250 x 160	