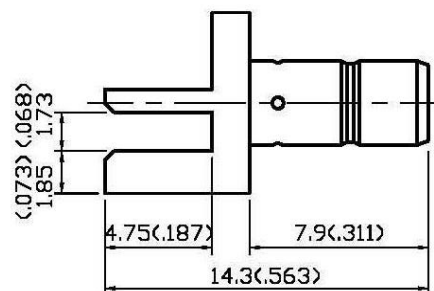
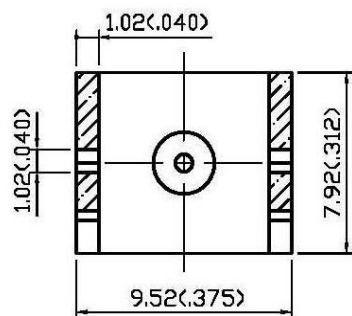
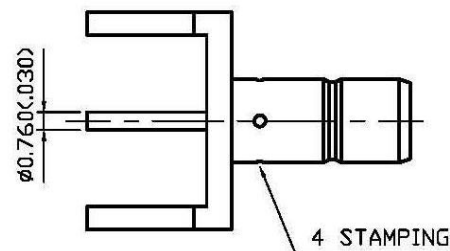
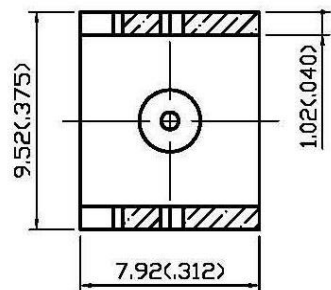


NO	DESCRIPTION	DATE
⚠	WORKING VOLTAGE → VOLTAGE RATING DEL. PROOF VOLTAGE	08.01.14'



1.0 ELECTRICAL

- 1.1 FREQUENCY RANGE: DC-4 GHz
- 1.2 NOMINAL IMPEDANCE: 50 OHM
- 1.3 VOLTAGE RATING: 335 VOLTS MAX. ⚠
- 1.4 VSWR: 1.42 MAX. @3 GHz

2.0 MATERIALS

- 2.1 BODIES: BRASS PER JIS-C3604
- 2.2 CENTER CONTACT: BRASS PER JIS-C3604
- 2.3 INSULATION: TEFLON PER ASTM D1457 AND ASTM D1710

3.0 FINISHES AND OTHERS

- 3.1 SEE BELOW TABLE FOR DETAILS.

4.0 MECHANICAL

- 4.1 INTERFACE IN ACCORDANCE WITH: MIL-STD-348A

5.0 ENVIRONMENTAL

- 5.1 OPERATING TEMPERATURE RANGE: -65° C TO +165° C

NO	DESCRIPTION	MATERIAL	Q'TY	FINISH
3	BODY	BRASS	1	GOLD 30 μ" MIN.
2	CENTER CONTACT	BRASS	1	GOLD 30 μ" MIN.
1	INSULATION	TEFLON	1	NONE



APPROVED by _____ DATE: _____

DESCRIPTION		SMB STRAIGHT END LAUNCH JACK RECEPTACLE							
製圖	DRAWN	TOLERANCE	品名	24-14-10	T.G.G	日期	DATE	版次	REV.
	Yoko						.X	±0.2	\ROHS COMPLIANT (<500)
檢圖	CHECK	.XX	±0.1	UNIT	DWG.NO.	24-0003			
	Arc						mm(in)		
認定	APPROVAL	.XXX	±0.05	SCALE					
	Angela				ANGLE	±5°	比例	4:1	