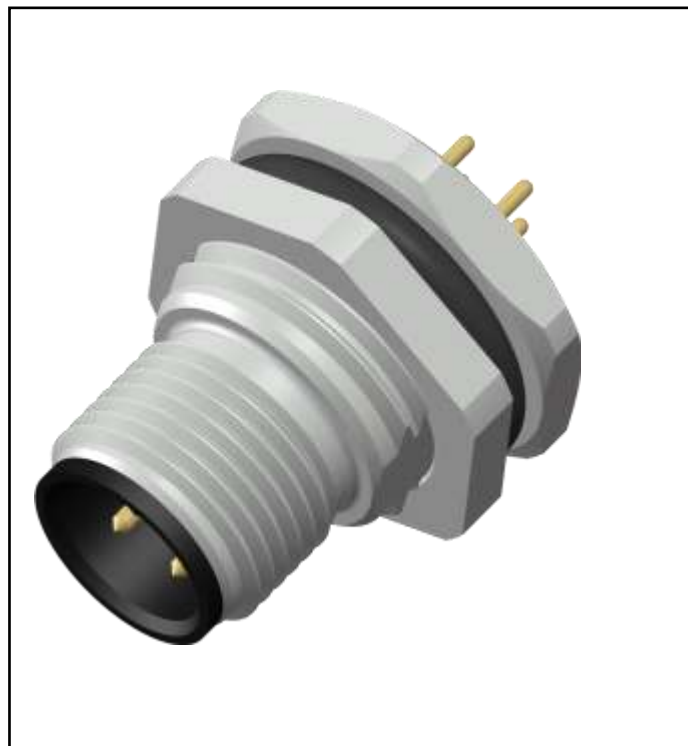


## FEATURES

- IP67
- Rear/ screw mounting with PG9 thread
- Straight body orientation
- Dip solder termination

## RS PRO M12 MALE REAR PANEL MOUNT CONNECTOR 4 PIN PG9 THREAD PCB MOUNT

RS Stock No.: 2080599



RS Professionally Approved Products bring to you professional quality parts across all product categories. Our product range has been tested by engineers and provides a comparable quality to the leading brands without paying a premium price.

## M12 Connector PG9 Clamp Nut

A series of RS Pro M12 panel-mounted connectors has socket type connection. This panel mount connector has a voltage rating of 250VAC and a current rating of up to 4A per contact.

### Features & Benefits

- Straight body orientation
- Dip solder termination
- Number of poles: 4

### Applications

The RS PRO series of M12 panel mount connectors are generally used in industrial applications. They are typically used when connecting to sensors and actuators. Some of the most popular areas are

- Instrumentation
- Process control
- Robotics
- Assembly lines
- Factory automation
- Industrial automation

### General Specifications

Rated Operational Voltage	250 V
Current Rating	4A
Insulation Resistance	>= 100 MΩ
Temperature Range	-25°C ... +75°C
Mounting	Rear (PG9)
Coding	A-Coded

### Material Specifications

Housing Material	Brass Ni Plated
Contact	Cu-Zn
Contact Plating	Gold Flash
Contact Carrier	Nylon 66
O-Ring	Neoprene
Pole	4

# RS PRO M12 PANEL MOUNT CONNECTOR



Clamp Nut	PG9
Termination	PCB Mount

## Protection Category

Degree of Protection	IP67
----------------------	------

## Additional Information

Custom Tariff Number	85369090
----------------------	----------

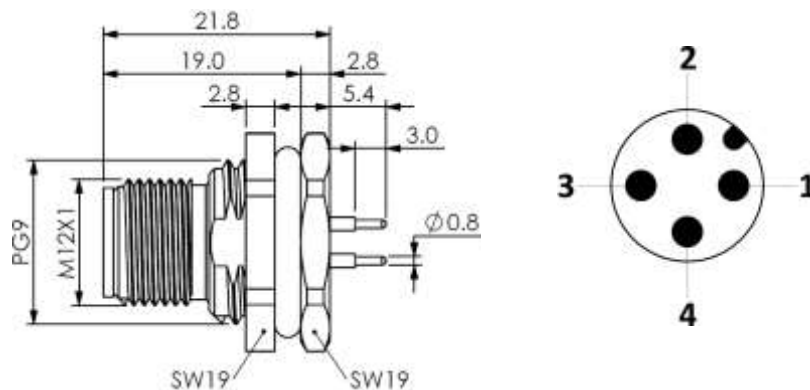
## Approvals

Standards Met	IEC 61076-2-101
---------------	-----------------

## Similar Products

Stock No.	Brand	Product Name	Attribute 1	Attribute 2
3002017222	RS PRO	RS PRO M12 PCB Mount Connector 5 Pin	M12 PCB Mount Connectors	Industrial Automation Cable Assemblies

## Connection Diagrams / Assembly Diagrams / Illustrations / Accessories



All Dimensions are in mm.