

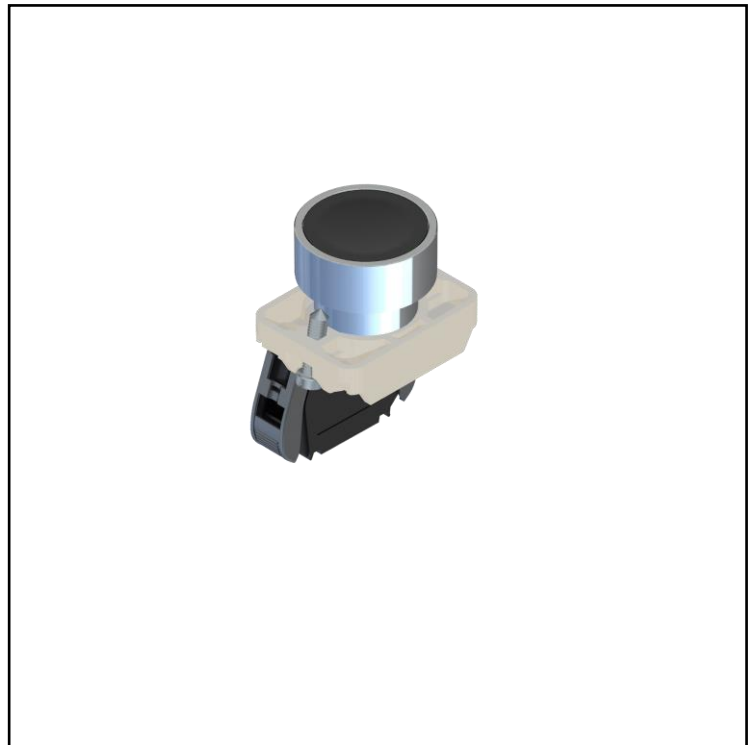
FEATURES

- Flush pushbutton
- Chrome-plated Zamak body

RS PRO Flush Push Button Complete Units

RS Stock No.:

2398175



RS Professionally Approved Products bring to you professional quality parts across all product categories. Our product range has been tested by engineers and provides a comparable quality to the leading brands without paying a premium price.

Push Button Complete Units

Product Description

*Metallic operators and installation by means of metal screws, secure maximum mechanical resistance.
Heavy duty operators*

General Specifications

Casing Material	Chrome-plated Zamak
Operator	Pushbutton
Color	Black
Outer diameter	30
Microswitch	1NO
Connecting Terminals	Screw with captive cable clamp
Connecting Cables Dimensions [mm ²]	1 or 2 conductors - 0.5 ... 2.5

Mechanical Specifications

Operating Temperatures [°C]	-25 / +70
Stock Temperatures [°C]	-40 / +80
Mechanical durability (Millions of operations)	1
B10d (million of operations)	2
Max. switching frequency [Cicli/h]	3600

Electrical Specifications

Protection against electrical shocks	Class II - Double insulation
Rated Insulating Voltage U_i [V]	690
Pollution Degree	3
Contact rating secondo UL508	A 600 Q 300
Rated impulsive voltage [kV]	8
Conventional thermal current in air free I_{th} (θ min 40 ° C) [A (θ)	10
Short circuit protection (EU min 500Vac - fuses type gG (gl)) [A]	10
Rated Operational Current I_e - AC-15 (50-60 Hz) [Vac - A]	24V - 10A / 240V - 6A / 400V - 4A
Rated Operational Current DC-13 [Vdc - A]	24V - 2,8A / 125V - 0.55A / 250V - 0.27A
Resistance Between Contacts [m Ω]	25

Push Button Complete Units



Protection Category

IP Degree of Protection	65 (front panel) 20 (rear panel)
-------------------------	----------------------------------

Additional Information

EAN	8000126233360
Custom Tariff Number	85371098

Approvals

Declarations	CE – UKCA
Standards Met	EN 60947-5-1 and UL 508