



⚠ To be discontinued

Commercial status

To be discontinued on: 01 April 2021

End-of-service soon on: 01 April 2021

Main

Range of product	Harmony Relay
Product or component type	Socket
Contact terminal arrangement	Separate
Product compatibility	Plug-in relay RXM with 2 C/O contact Plug-in relay RXM with 4 C/O contact
Shape of pin	Flat
Device short name	RXZ
Sale per indivisible quantity	10

Complementary

[Ith] conventional free air thermal current	12 A 2 C/O relays 6 A 4 C/O relays
[Ue] rated operational voltage	< 250 V AC
Connections - terminals	Spring clamp terminals (push 'n stay), 1 x 0.5...1 x 1.5 mm ² (AWG 20...AWG 16) flexible with cable end Spring clamp terminals (push 'n stay), 1 x 0.5...1 x 1.5 mm ² (AWG 20...AWG 16) solid without cable end
Fixing mode	Clip-on (35 mm symmetrical DIN rail)
Marking	CE
Width	31 mm
Net weight	0.073 kg

Environment

Standards	IEC 61984
Product certifications	CSA GOST Lloyd's UL
Ambient air temperature for storage	-40...85 °C

Ambient air temperature for operation	-40...55 °C
IP degree of protection	IP20 conforming to EN/IEC 60529
Dielectric strength	2500 V

Packing Units

Package 1 Weight	0.067 kg
Package 1 Height	0.750 dm
Package 1 width	1.000 dm
Package 1 Length	1.600 dm

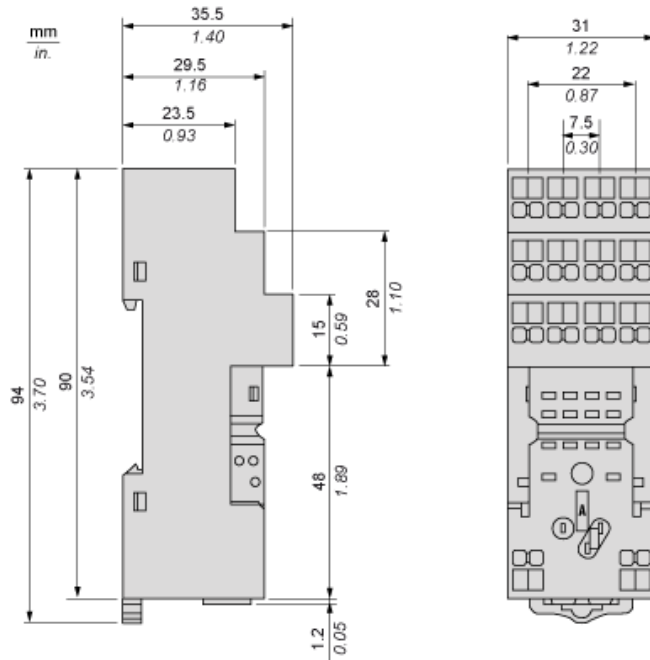
Offer Sustainability

Sustainable offer status	Green Premium product
REACH Regulation	REACH Declaration
REACH free of SVHC	Yes
EU RoHS Directive	Pro-active compliance (Product out of EU RoHS legal scope) EU RoHS Declaration
Toxic heavy metal free	Yes
Mercury free	Yes
RoHS exemption information	Yes
China RoHS Regulation	China RoHS declaration
Environmental Disclosure	Product Environmental Profile

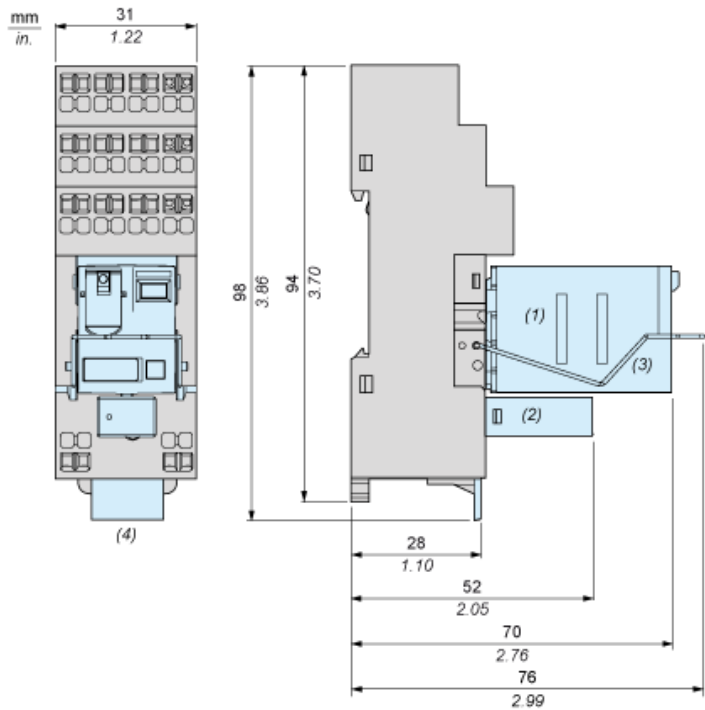
Contractual warranty

Warranty	18 months
----------	-----------

Socket Only

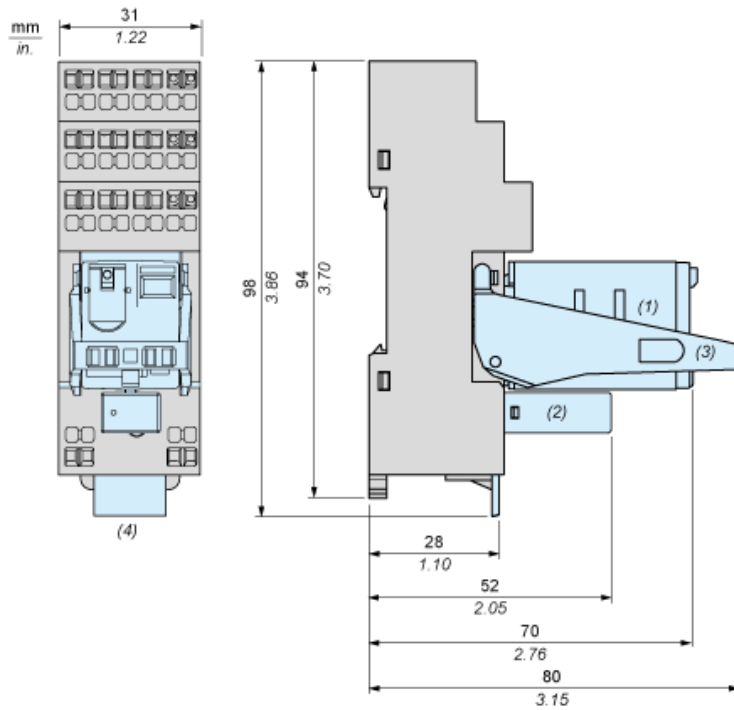


Socket with Relay and Metal Maintaining Clamp



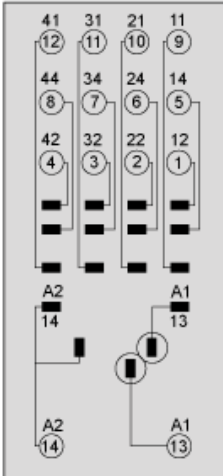
- (1) Relay
- (2) Protection module
- (3) Maintaining clamp
- (4) Legend

Socket with Relay and Plastic Maintaining Clamp



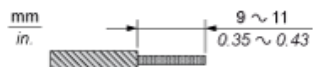
- (1) Relay
- (2) Protection module
- (3) Maintaining clamp
- (4) Legend

Wiring Diagram

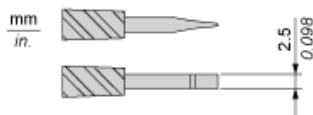


Wiring Recommendations

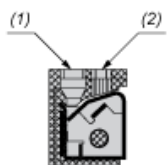
Exposed Conductor Length



Flat-Blade, Parallel-tip, 2.5 mm diameter



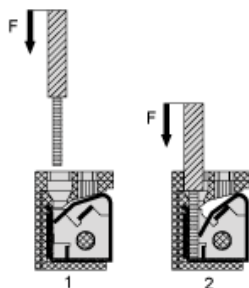
Cable Hole and Tool Hole



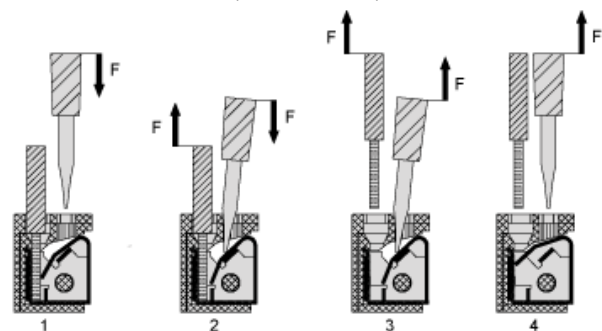
- (1) Cable Hole
- (2) Tool Hole

Installation and Uninstallation

Installation : Push In (Insert cable)



Uninstallation : Pull Out (Remove cable)



RXZE2S114S is replaced by the following product range:



Harmony Electromechanical Relays

Interface, miniature, and power electromechanical relays

EMR relays include interface, miniature, and power relays from 1 CO to 4 CO contacts, up to 30 A.

Reason for Substitution: End of life | Substitution date: 01 July 2021