



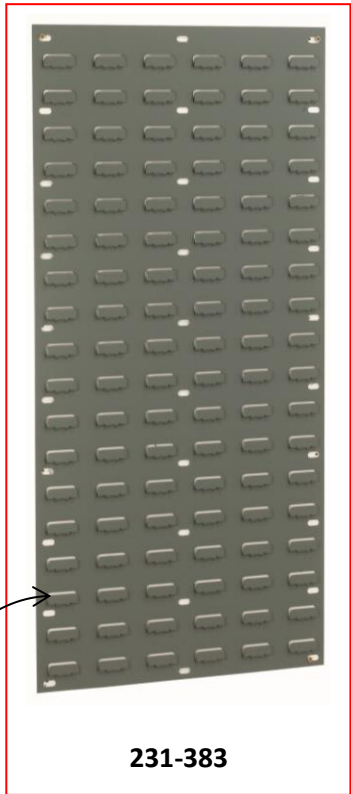
# RS Grey Louvred Panel Storage Units

**An ideal system for wall mounting accessories such as bins, spigots etc...  
(Supplied Empty. Bins/Accessories To be Purchased Separately)**

- Accessories to be purchased separately, please view the compatibility table on the web page and see typical examples/images below
- Unique double indented louvre for extra strength.
- Finished epoxy powder coated grey finish
- Excludes wall fixings

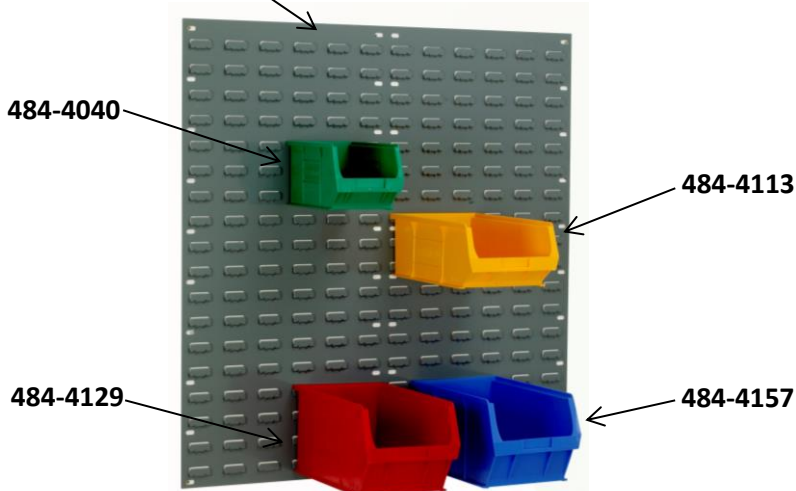
**ALL ACCESSORIES TO BE PURCHASED SEPARATELY**

Louvred Panel Size (mm)	RS Stock No.	Total (NL) No. of Louvres	No. Of Louvres	
			Width	Height
H438 x W457	<b>555-471</b>	48	6	8
H946 x W457	<b>231-383</b>	108	6	18
H438 x W914	<b>257-6975</b>	96	12	8
H946 x W914	<b>231-399</b>	216	12	18



(NL)  
NO.OF  
LOUVRES

231-399

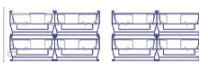

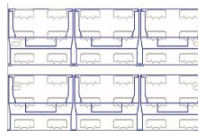



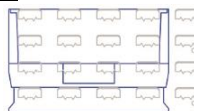


## Louvred Panel Configuration for Stacking Containers

1. To calculate approximately the amount of Stacking Containers that can be accommodated on a Louvred Panel, or part thereof, take the LV (Louvre Value) of the container or accessory and divide it in to the NL (Number of Louvres) per panel. To determine the number/size of Louvred Panels required to locate specific quantities of containers, simply reverse the above process.

2. To calculate the exact configuration, see diagram.

IMPERIAL LOUVRED PANELS				
Louvred Panel Size (mm)	RS Stock No.	Total (NL) No. of Louvres	No. Of Louvres	
			Width	Height
H438 x W457	<b>555-471</b>	48	6	8
H946 x W457	<b>231-383</b>	108	6	18
H438 x W914	<b>257-6975</b>	96	12	8
H946 x W914	<b>231-399</b>	216	12	18

Stacking Container Size	Container RS Stock Nos		No. of Louvres			
			Width	Height	Total(LV) Louvre Value	
(Size 1) L90xW100xH50mm	3151123-WHITE	4843996-BLUE	1.5	1	1.5	
	4843974-RED	4843823-YELLOW				
	4843980-GREEN	550319-BLACK				
	4696728-ORANGE	-				
(Size 2) L165xW100xH75mm	3151139-WHITE	4844028-BLUE	1.5	2	3	
	4844006-RED	4843839-YELLOW				
	4844012-GREEN	550325-BLACK				
	4696784-ORANGE	-				
(Size 3) L240xW150xH132mm	3151145-WHITE	4844056-BLUE	2	3	6	
	4844034-RED	4844062-YELLOW				
	4844040-GREEN	550331-BLACK				
	4696778-ORANGE	-				
(Size 4) L350xW205xH132mm	3151151-WHITE	4696762-ORANGE	3	3	9	
	4844078-RED	4844107-BLUE				
	4844090-GREEN	4844113-YELLOW				
(Size 5) L350xW205xH182mm	3151173-WHITE	4696756-ORANGE	3	4	12	
	4844129-RED	4844157-BLUE				
	4844135-GREEN	4844163-YELLOW				
(Size 6) L375xW420xH182mm	3151189-WHITE	4696740-ORANGE	6	4	24	
	4843845-RED	4844185-BLUE				
	4844179-GREEN	4844191-YELLOW				
(Size 7) L520xW310xH200mm	4563426-WHITE	4695157-ORANGE	4	4	16	
	3505873-BLUE	3505895-GREEN				
	3505845-RED	3505867-YELLOW				

## RS Grey Louvred Panel Storage Units

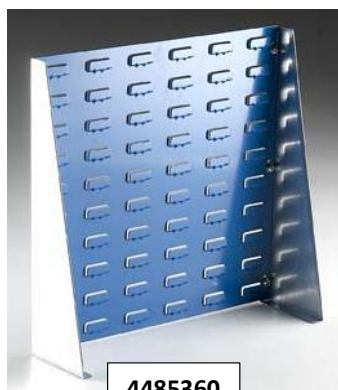
Purposely built empty bench stands for use complete with the Stacking Storage Bins range and Spigots

- Ideal for workshop assembly areas
- Storage bins to be purchased separately
- Available in 2 stand sizes – See images and tables below.
- Blue epoxy powder coated louvred panel and metallic grey legs

**SIMPLE CONTAINER/LOUVRED PANEL CALCULATION FOR EMPTY BENCH STAND UNITS**

Take the LV (Louvre Value) of the container or accessory and divide it in to the NL (Number of Louvres) per panel. To determine the number/size of Louvred Panels required to locate specific quantities of containers, simply reverse the above process.

Bench Stand Size – H x W(mm)	RS Stock No.	Total (NL) No. of Louvres	No. Of Louvres	
			Width	Height
500 x 500	<b>4485360</b>	60	6	10
500 x 1000	<b>4485376</b>	120	12	10



4485360



4485376

LOUVRED PANEL BENCH STANDS KIT EXAMPLES			
	KIT 1	KIT 2	KIT 3
<b>Bench Stand H x W (mm)</b>	500 x 500	500 x 500	500 x 1000
<b>No. of Louvres (NL)</b>	60	60	120
<b>Stand RS Stock No</b>	4485360 x 1	4485360 x 1	4485376 x 1
<b>Bins RS Stock No</b>	4844006 x 20	4844028 x 20	4844006 x 20
	-	-	4844056 x 12



KIT 1



KIT 3

## Other Louvred Panel Accessories:

### Mesh Baskets & Spigots

Accessories ideal for purchasing separately when using Louvred Panels..

Steel wire mesh baskets are white plastic coated.

Spigots are available with either 19mm square and 13mm round steel tube with a durable ABS plastic back plates. The wire spigot options are manufactured from 3.6mm wire, the single wire spigots are supplied complete with a rubber end cap.



**A SIMPLE CALCULATION FOR WORKING OUT HOW MANY ACCESSORIES CAN FIT ON TO A LOUVRED PANEL**

Take the LV (Louvre Value) of the container or accessory and divide it in to the NL (Number of Louvres) per panel. To determine the number/size of Louvred Panels required to locate specific quantities of containers, simply reverse the above process

MESH BASKETS			
H x W x D (mm)	LV - Louvred Value	Capacity(Kg)	RS Stock No.
200 x 460 x 200	30	30	5132152
200 x 460 x 330	30	30	5132168

SPIGOTS			
Description	Size	Pack Size	RS Stock No.
<b>(LV - Louvred Value = 2) (Load Capacity = 10Kgs)</b>			
SIZE 1 SPIGOT	19mm Square Tube x 152mm Long	(PK/5)	3741489
SIZE 2 SPIGOT	19mm Square Tube x 304mm Long	(PK/5)	3741568
SIZE 3 SPIGOT	19mm Square Tube x 304mm Long x 108mm Upstand	(PK/5)	3741552
SIZE 4 SPIGOT	13mm Diameter Round Tube x 152mm Long	(PK/5)	3741546
SIZE 5 SPIGOT	13mm Diameter Round Tube x 304mm Long	(PK/5)	3741530
<b>(LV - Louvred Value = 1) (Load Capacity = 1Kg)</b>			
SIZE 6 SPIGOT	Single Wire x 152mm Long	(PK/10)	3741524
SIZE 7 SPIGOT	Single Wire x 203mm Long	(PK/10)	3741518
SIZE 8 SPIGOT	Double Wire x 152mm Long	(PK/10)	3741502
SIZE 9 SPIGOT	Double Wire x 203mm Long	(PK/10)	3741495

