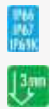


Illustration	Colour	Possible Contact Configuration	Part Number
--------------	--------	--------------------------------	-------------

### Emergency Stop\_RRJUUV



#### Turn to Reset: 1NC Momentary

● Red (Mushroom head)	1NC	-	-	GS1 RRJUUV-01-RT
-----------------------	-----	---	---	------------------

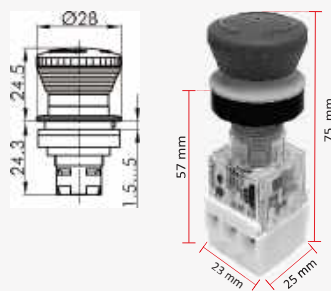
#### Turn to Reset: 2NC Momentary

● Red (Mushroom head)	-	2NC	-	GS1 RRJUUV-02-RT
-----------------------	---	-----	---	------------------

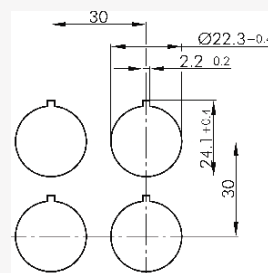
#### Turn to Reset: 1NO 1NC Momentary

● Red (Mushroom head)	-	-	1NO 1NC	GS1 RRJUUV-11-RT
-----------------------	---	---	---------	------------------

Dimensional Drawing:



Cut-out Hole Drawing:



Awards:



## Technical Specification

### General Data:

Front Dimensions:	Ø 28 mm
Panel Cut-out:	Ø 22.3 mm
Front Bezel Height:	2 mm
Operating Travel:	3 mm
IP Rating:	IP66, IP67, IP69K
Illumination:	No
Contact Type:	Twin contact block. Separate plungers, positive opening contact
Protection Class:	II (protective insulation)
Connection Type:	Screw Connection
Contact Material:	AgNi

Max. Storage Temperature:	-50°C ... 85°C
Max. Operating Temperature:	-50°C ... 85°C, without illumination -30°C ... 65°C, using LEDs
Mechanical Life:	1 m switching cycles
Electrical Life:	1 m operations at rated load
Contact Resistance NO:	<20 mOhm
Contact Resistance NC:	<20 mOhm
Min. Current:	1 mA
Min. Voltage:	5V

	Alternate Current	Direct Current
Rated Insulation Voltage:	250V	300V
Rated Operating Voltage:	250V	250V / 125V / 60V / 24V
Rated Operating Current:	1.5A	0.2A / 0.4A / 1A / 2A

### Approvals:



### Use & Applications:

- ✓ The actuators are designed for exclusive applications as well as use in harsh environments.
- ✓ Flexible contact configuration and ease of assembly.
- ✓ The units can be used in every field of application.
- ✓ The control units are designed to accept a clearly visible marking, easy to produce and comprising a variety of symbols and inscriptions.
- ✓ Multiple standards nameplates are available and also according to user's requirements.