

LED SURFACE LUMINAIRE



LNS SERIES (LITE)



Application

Passageways, Cabins, Lounges, Dining rooms, Accommodation areas

Mounting Method

4 mounting holes ø5.5mm

Material

Diffuser: Polycarbonate
Housing: Marine grade Aluminium AL6063

Electrical

Flexible wiring, Heat resistant up to 105°C

Options

100V ~ 120V AC
220V ~ 240V AC
24V DC

Weight

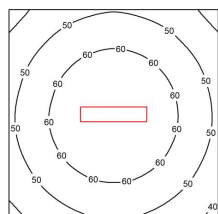
LNS22: 0.9Kg

Key Features

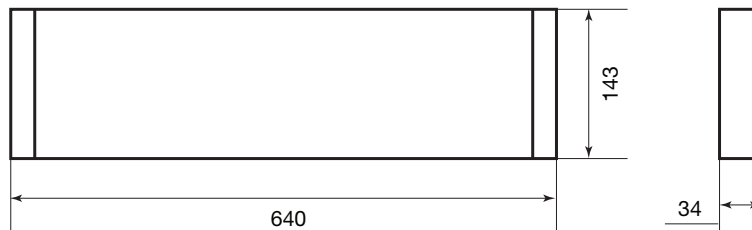
- Triac dimming compatible
- Special designed polycarbonate diffuser to optimize the LED lighting performance
- Long service life of 50,000 hours L70 @ 45°C (Ta)
- Safety, EMC and IEC compliance
- Available with battery backup system and emergency lighting



*For AC models only



LNS22 (2x10W) model:
Average Lux : 55lx
Mounting Height : 2.3 Meters
Measurement Area : 2m²



[mm]

TECHNICAL SPECIFICATIONS IP 20

- S Denotes : Standard lighting
- B Denotes : With 3Hr NiMH battery backup
- E Denotes : With DC24V emergency LED

Ideal Replacement:



BH Code	Type	Main Voltage	Power	CCT	Ambient Temp (Ta)	System Lumen
LNS22AXA13KS	LNS22	100V - 120V AC	2x10W	2700K	-30°C ~ +45°C	1700lm
LNS22AXA13KB	LNS22-B	100V - 120V AC	2x10W	2700K	-30°C ~ +45°C	1700lm
LNS22AXA13KE	LNS22-E	100V - 120V AC	2x10W	2700K	-30°C ~ +45°C	1700lm
LNS22AXA14KS	LNS22	100V - 120V AC	2x10W	4000K	-30°C ~ +45°C	1700lm
LNS22AXA14KB	LNS22-B	100V - 120V AC	2x10W	4000K	-30°C ~ +45°C	1700lm
LNS22AXA14KE	LNS22-E	100V - 120V AC	2x10W	4000K	-30°C ~ +45°C	1700lm

Also available in other CCT.

*Ambient Temperature is not applicable for Battery Backup System and Emergency Lighting.

Due to our continuous development and product improvement policy, we reserve the rights to revise the specifications of all products without prior notice.



LED SURFACE LUMINAIRE



LNS SERIES (LITE)

- S Denotes : Standard lighting
- B Denotes : With 3Hr NiMH battery backup
- E Denotes : With DC24V emergency LED

TECHNICAL SPECIFICATIONS

IP 20

Ideal Replacement:

 LNS22 for 2X18W

BH Code	Type	Main Voltage	Power	CCT	Ambient Temp (Ta)	System Lumen
LNS22AXA16KS	LNS22	100V - 120V AC	2x10W	6500K	-30°C ~ +45°C	1700lm
LNS22AXA16KB	LNS22-B	100V - 120V AC	2x10W	6500K	-30°C ~ +45°C	1700lm
LNS22AXA16KE	LNS22-E	100V - 120V AC	2x10W	6500K	-30°C ~ +45°C	1700lm

*Ambient Temperature is not applicable for Battery Backup System and Emergency Lighting.

BH Code	Type	Main Voltage	Power	CCT	Ambient Temp (Ta)	System Lumen
LNS22AXA23KS	LNS22	220V - 240V AC	2x10W	2700K	-30°C ~ +45°C	1700lm
LNS22AXA23KB	LNS22-B	220V - 240V AC	2x10W	2700K	-30°C ~ +45°C	1700lm
LNS22AXA23KE	LNS22-E	220V - 240V AC	2x10W	2700K	-30°C ~ +45°C	1700lm
LNS22AXA24KS	LNS22	220V - 240V AC	2x10W	4000K	-30°C ~ +45°C	1700lm
LNS22AXA24KB	LNS22-B	220V - 240V AC	2x10W	4000K	-30°C ~ +45°C	1700lm
LNS22AXA24KE	LNS22-E	220V - 240V AC	2x10W	4000K	-30°C ~ +45°C	1700lm
LNS22AXA26KS	LNS22	220V - 240V AC	2x10W	6500K	-30°C ~ +45°C	1700lm
LNS22AXA26KB	LNS22-B	220V - 240V AC	2x10W	6500K	-30°C ~ +45°C	1700lm
LNS22AXA26KE	LNS22-E	220V - 240V AC	2x10W	6500K	-30°C ~ +45°C	1700lm

*Ambient Temperature is not applicable for Battery Backup System and Emergency Lighting.

BH Code	Type	Main Voltage	Power	CCT	Ambient Temp (Ta)	System Lumen
LNS22AXD25KS	LNS22	24V DC	2x10W	5000K	-30°C ~ +45°C	1700lm