

Datasheet

RS PRO 2.54mm Pitch, 50 Way 2 Row Straight Shrouded PCB Header

Stock No: 2272199



Product Details:

RS PRO Series .100" Box Headers are a dual row shrouded header for use with dual row IDC female socket connectors. Our low profile, space saving design has a center slot for the socket's polarization bump. Adam Tech's Box Headers are available in Straight PCB Mount, Right Angle PCB Mount and SMT Mounting. Plating options include choice of Gold, Tin or Selective Gold. SMT versions are manufactured with a Hi-Temp insulator. Additional options include latches and custom pin lengths.

Features & Benefits:

- Superior low-profile design
- Slot for IDC socket Polarization bump
- Straight PCB, Right Angle PCB and SMT versions
- Gold, Tin or Selective Gold plating
- Options include Elevated types and integral latches.
- Hi-Temp insulator available.

SPECIFICATION:

Material:

Insulator: PBT, Glass reinforced, rated UL-94V-0

Insulator Color: Black

Contacts: Brass

Contact Plating:

Gold flash over Nickel underplate overall

Electrical:

Current rating: 3 Amp.

Contact resistance: 20 mohms max

Insulation resistance: 5000 Mohms min @ 500 VDC

Dielectric withstanding voltage: 500 VAC for 1 minute

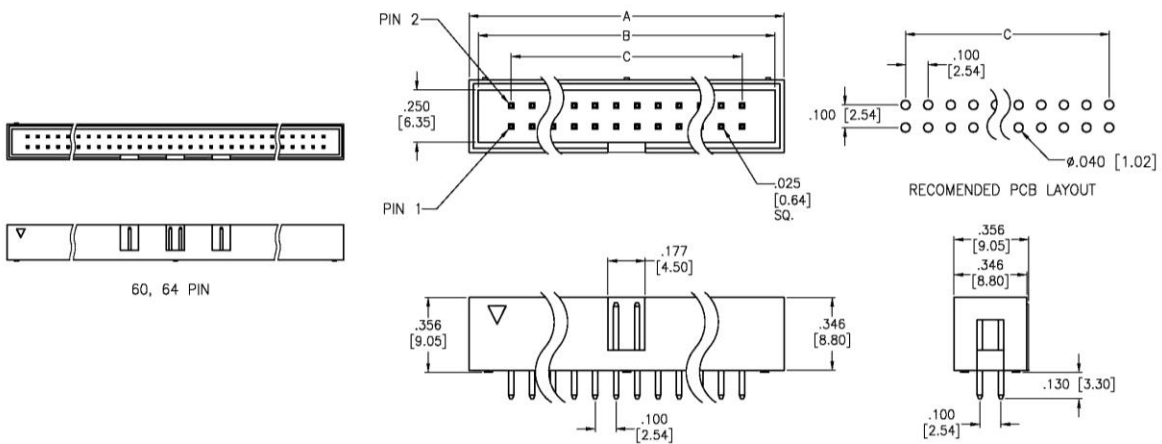
Temperature Rating:

Operating temperature: -40°C to +105°C

Environmental:

Lead free, RoHS compliant.

Dimensional line drawings



$$A = .100 [2.54] \times \text{No. of Positions} / 2 + .300 [7.62]$$

$$B = .100 [2.54] \times \text{No. of Positions} / 2 + .213 [5.40]$$

$$C = .100 [2.54] \times \text{No. of Spaces}$$

General

Extra page for more complex

