

Cartridge Fuses

Ceramic, Time-Lag, $\Phi 5.2\text{mm} \times 20\text{mm}$ **multicomp** PRO

**RoHS
Compliant**



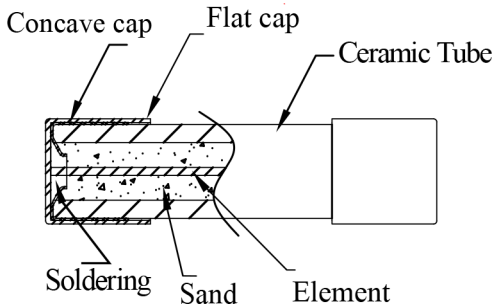
Description

This series time-lag fuse with high breaking capacity for use with printed circuit boards is used in a large variety of applications. This $\Phi 5\text{mm} \times 20\text{mm}$ device is constructed of a ceramic tube with electro-plated brass end caps. This series with 500V DC rating and 400 Ampere breaking, and 600V AC rating and 100 Ampere breaking, offers excellent quality and is 100% tested for cold resistance and precise length.

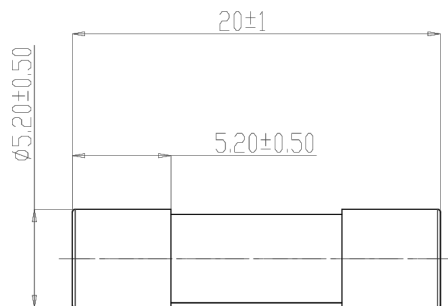
Features

- Miniature fuse with Time-lag, high breaking capacity
- $\Phi 5\text{mm} \times 20\text{mm}$ physical dimensions
- Ceramic tube, encapsulated design with nickel - plated brass end caps
- Protection against harmful over-currents in primary and secondary applications.
- Designed compliant to UL248-14, IEC60127-7

Mechanical Specifications



Dimensions



Electrical Specifications

Dimensions : Millimetres

Time vs Current Characteristics Table

(measured with constant current power supply)

Time vs Current Characteristics: IEC 60127-2/V					
Rated Current	100%	210%	275%	400%	1000%
1A~3.15A	>1h	<30min	750ms~80s	95ms~5s	10ms~150ms
4A~6.3A				150ms~5s	
8A~16A				150ms~8s	

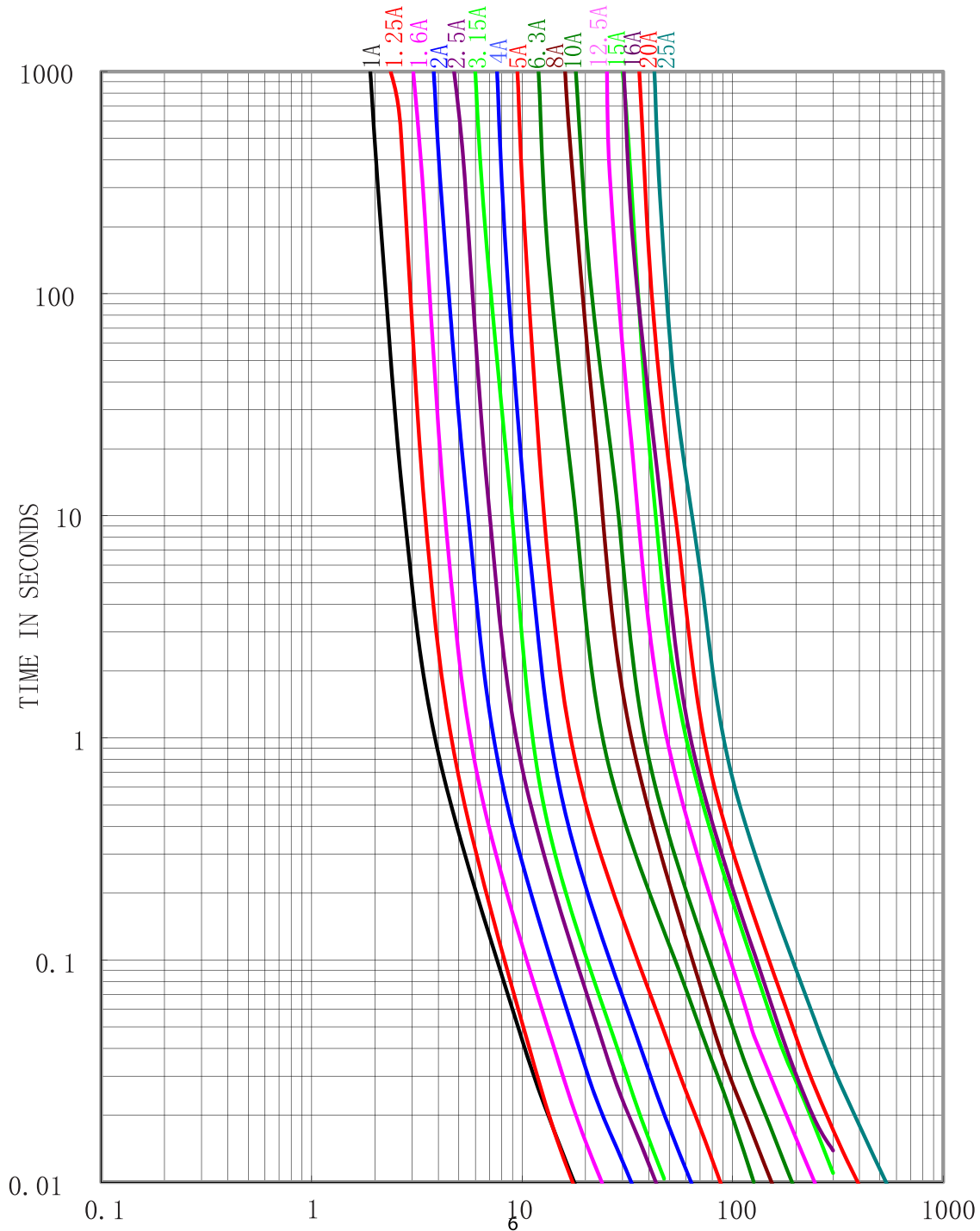
Newark.com/multicomp-pro
Farnell.com/multicomp-pro
sg.element14.com/b/multicomp-pro

multicomp PRO

Cartridge Fuses

Ceramic, Time-Lag, $\Phi 5.2\text{mm} \times 20\text{mm}$ **multicomp** PRO

Average Time Current (I-T) Curves

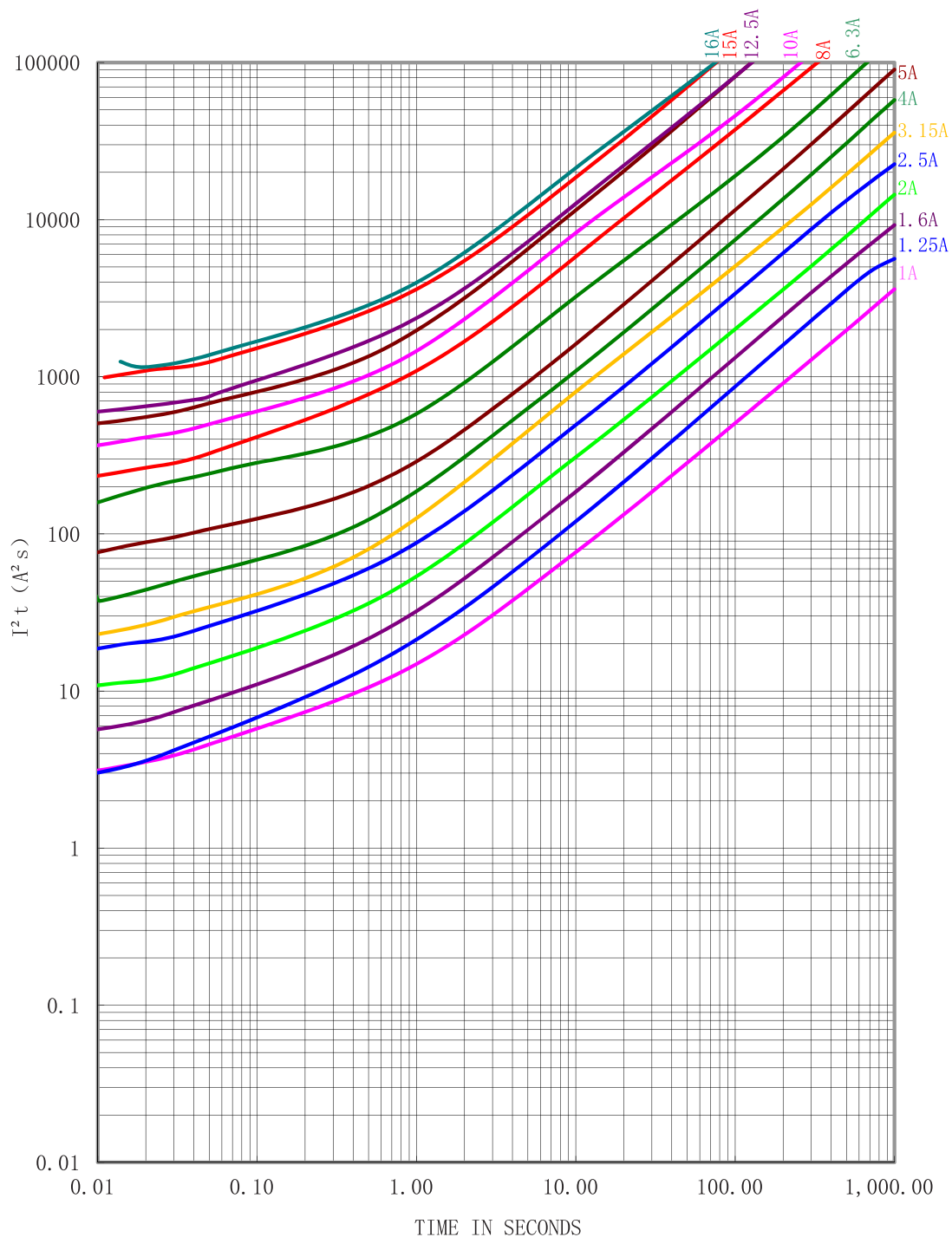


Cartridge Fuses

Ceramic, Time-Lag, $\Phi 5.2\text{mm} \times 20\text{mm}$

multicomp PRO

Time-Current Characteristics



Cartridge Fuses

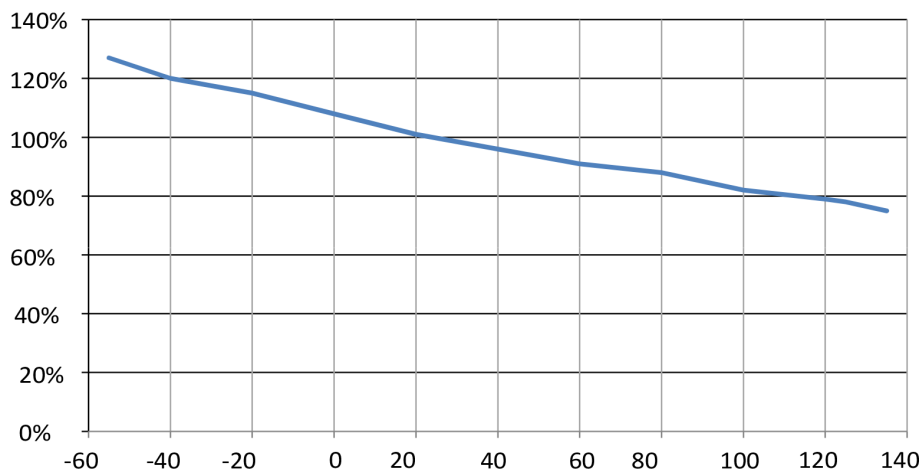
Ceramic, Time-Lag, $\Phi 5.2\text{mm} \times 20\text{mm}$ **multicomp** PRO

Electrical characteristics

Electrical Characteristics at 25°C							
Amp Code	Rated Current	Rated Voltage	Nominal Melting I ² t (A ² sec)	Typical cold Resistance (mΩ)	Breaking Capacity		
						cURus	TUV
MP008897	1.00A	600V AC 500V DC	4.37	336	400A@ 500V DC 100A@600V AC	●	●
MP008898	2.00A		13.1	123			
MP008899	3.15A		29.5	34.9			
MP008900	4.00A		50.3	25.0			
MP008901	5.00A		102	17.3			
MP008902	6.30A		258	11.8			

Notes: (1) Permissible continuous operating current is $\leq 100\%$ at ambient temperature of 23°C (73.4°F)
 (2) Typical pre-arcing I²t are measured at 10I_n current.

Temperature Derating Curve



Part Number Table

Description	Part Number
Cartridge Fuse, Time-Lag, $\Phi 5.2\text{mm} \times 20\text{mm}$, 1A, 600V AC/500V DC, Clip Mount	MP008897
Cartridge Fuse, Time-Lag, $\Phi 5.2\text{mm} \times 20\text{mm}$, 2A, 600V AC/500V DC, Clip Mount	MP008898
Cartridge Fuse, Time-Lag, $\Phi 5.2\text{mm} \times 20\text{mm}$, 3.15A, 600V AC/500V DC, Clip Mount	MP008899
Cartridge Fuse, Time-Lag, $\Phi 5.2\text{mm} \times 20\text{mm}$, 4A, 600V AC/500V DC, Clip Mount	MP008900
Cartridge Fuse, Time-Lag, $\Phi 5.2\text{mm} \times 20\text{mm}$, 5A, 600V AC/500V DC, Clip Mount	MP008901
Cartridge Fuse, Time-Lag, $\Phi 5.2\text{mm} \times 20\text{mm}$, 6.3A, 600V AC/500V DC, Clip Mount	MP008902

Important Notice : This data sheet and its contents (the "Information") belong to the members of the AVNET group of companies (the "Group") or are licensed to it. No licence is granted for the use of it other than for information purposes in connection with the products to which it relates. No licence of any intellectual property rights is granted. The Information is subject to change without notice and replaces all data sheets previously supplied. The Information supplied is believed to be accurate but the Group assumes no responsibility for its accuracy or completeness, any error in or omission from it or for any use made of it. Users of this data sheet should check for themselves the Information and the suitability of the products for their purpose and not make any assumptions based on information included or omitted. Liability for loss or damage resulting from any reliance on the Information or use of it (including liability resulting from negligence or where the Group was aware of the possibility of such loss or damage arising) is excluded. This will not operate to limit or restrict the Group's liability for death or personal injury resulting from its negligence. Multicomp Pro is the registered trademark of Premier Farnell Limited 2019.

Newark.com/multicomp-pro
 Farnell.com/multicomp-pro
 sg.element14.com/b/multicomp-pro

multicomp PRO