

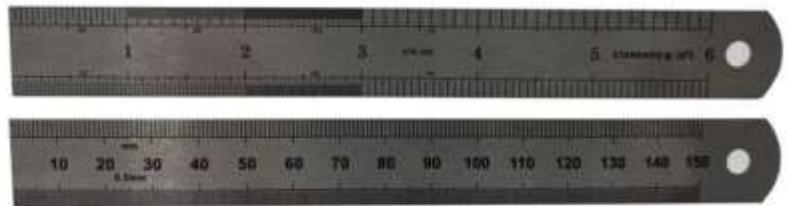


ENGLISH

Datasheet

RS Pro Rigid Steel Rule Metric and Inch Two Sided with Round End

RS Stock No: 2197001,2197296,2197297,2197298,2197299



Specifications:

Conform to EEC-Class 1, Ref 73/362/EEC

Manufactured from high quality steel

Fully hardened and tempered

Polished stainless steel finish

Graduations etched from precise glass masters for repeated accuracy

Order Code	Manufacturers Code	Length	Type	Style	End Style
2197001, 2197296,2197297, 2197298,2197299	676-006	150mm/6"	Rigid	64R	D End

Width & Thickness	Rule Marking Front Face (Inch)	Rule Marking Reverse Face (Metric)
19.0 x 0.68mm	16ths, 32nds, 64ths 10ths, 20ths, 50ths, 100ths	1.0mm and 0.5mm



ENGLISH

Datasheet

RS Pro Rigid Steel Rule Metric and Inch Two Sided with Round End

RS Stock No:

Technical:

EEC Directive 73-362 / EEC: Rules Class 1 and 2

For Metric Scales Only: (there is no specification for Inch Scales)

Permissible Errors: For EEC Class 1 Rules

Maximum permissible error between 2 intervals upto 1mm = 0.1mm

Maximum permissible error between two intervals not exceeding 10mm = 0.2mm

From Rule End: Above tolerance increased by 0.1mm

Examples:

Rule End to 1mm graduation = Normal Tol. 0.1mm + Additional Tol. 0.1mm = 0.2mm

Rule End to 10mm graduation = Normal Tol. 0.2mm + Additional Tol. 0.1mm = 0.3mm

Overall Length Tolerance

$$\text{Tol} = [a + (b \times L)]$$

a = 0.1 for class 1

b = 0.1 for class 1

L = Length of scale rounded up to the nearest metre

Example for a 300mm rule, when measurement is taken from the 10mm graduation to the 300mm graduation:

$$\text{Tol} = [0.1 + (0.1 \times 1)] = 0.2\text{mm}$$