



ENGLISH

Datasheet

Designed for low cost, high volume applications such as vending machines, magnetic card readers, printer mechanisms, actuators and all types of coin control systems.

Fitted with an all metal gearhead with sintered iron gears running on hardened steel shafts. The output shaft runs in sintered bronze bearings. The permanent magnet motors are wound for different speeds for each voltage to give a wide choice of final speeds when matched to the seven gearheads.

Weight 115 - 140 gms according to ratio

Max. radial load: 50N (8mm from mounting face)

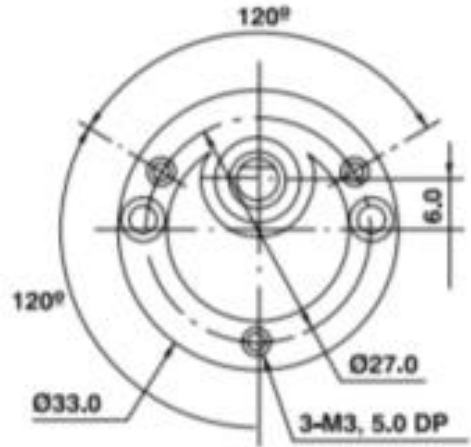
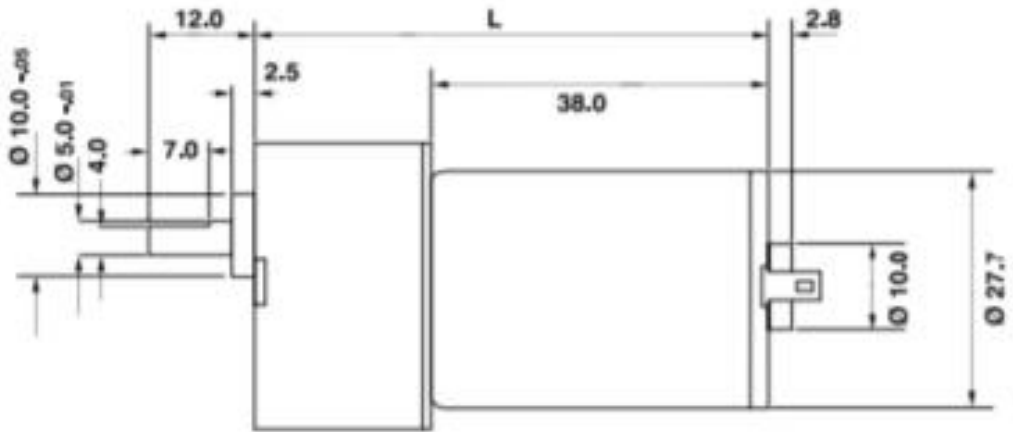
Max. axial load: 33N (at shaft centre)

Max. radial play: 0.08mm

Max. axial play: 0.50mm



ENGLISH



All dimensions in millimetres