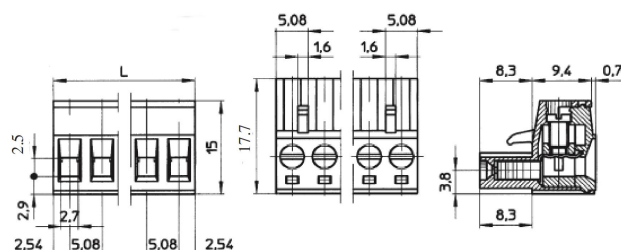


# Datasheet

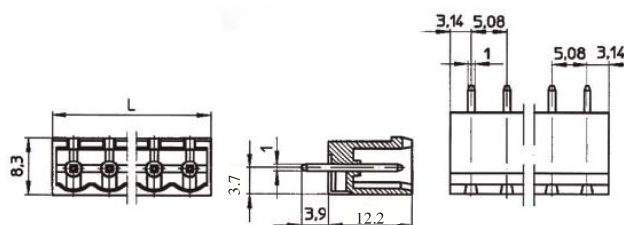
## 5.08mm Pitch Pluggable Rising Clamp Terminal

ENGLISH



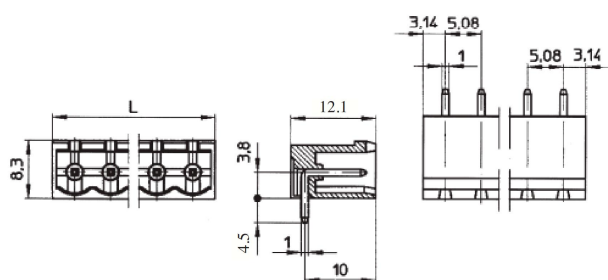
### Female connector

TYPE NO.	POLES	LENGTH
8971219	2	10.2mm
8971212	3	15.2mm
8971216	4	20.3mm
8971225	5	25.4mm
8971228	6	30.5mm
8971222	7	35.6mm
8971231	8	40.6mm
8971234	9	45.7mm



### PCB mounting male vertical (closed end)

TYPE NO.	POLES	LENGTH
8971238	2	11.4mm
8971247	3	16.4mm
8971240	4	21.5mm
8971244	5	26.6mm
8971253	6	31.7mm
8971256	7	36.78mm
8971250	8	41.8mm
8971269	9	46.9mm



### PCB mounting male horizontal (closed end)

TYPE NO.	POLES	LENGTH
8971262	2	11.4mm
8971266	3	16.4mm
8971275	4	21.5mm
8971278	5	26.6mm
8971272	6	31.7mm
8971281	7	36.78mm
8971284	8	41.8mm
8971288	9	46.9mm

- 2-24 pole solid block
- Pluggable male-female connectors
- Open & closed headers
- Horizontal & vertical female plug styles
- Polarised mouldings
- Moulded in green UL94-V0 flame retardant PA66
- Professional rising clamp terminals
- 0.33-2mm<sup>2</sup> (22-14AWG) solid & stranded cable
- Captive screws
- Guided pin alignment
- approved

### SPECIFICATION

Rating	15A 300V
Insulation resistance	1000MΩ/1000V
Withstand Voltage	AC1500V/1min
Contact Resistance	20mΩ
Working Temperature	-40°C to +105°C
Mouldings	UL94-V0 flame retardant PA66
Pin/Terminal	Tin plated brass
Screw/Torque	M2.5 Steel, Nickel Plated 0.4Nm
Recommended PCB hole size	ø1.7mm