

## FEATURES

- Rated currents up to 6A
- Designed for increased requirements
- Designed for increased requirements
- Excellent differential and common-mode attenuation

# RS PRO 6A 250 V ac, Chassis Mount Power Line Filter - 2 Phase

RS Stock No.: 237-8711, 237-8712



RS Professionally Approved Products bring to you professional quality parts across all product categories. Our product range has been tested by engineers and provides a comparable quality to the leading brands without paying a premium price.

## Power Line Filters

### Product Description

- Electrical and electronic equipment
- Medical equipment
- Datacom equipment
- Office automation equipment

### General Specifications

The compact size can be applied to various situations. YB12 filters are also available as two-stage filters (YB35) in noisy environment. There are a variety of parts and combinations to meet different customer's EMC tests. Customized products according to customer's requirements.

### Mechanical Specifications

size	51X51X29mm (L X W X H)
weight	0.160kgs

### Electrical Specifications

Rated Voltage Max.	115/250VAC
Operating frequency	50/60Hz
Rated currents	6A
Hipot Rating	L-N 500VDC, L/N-G 2250VDC

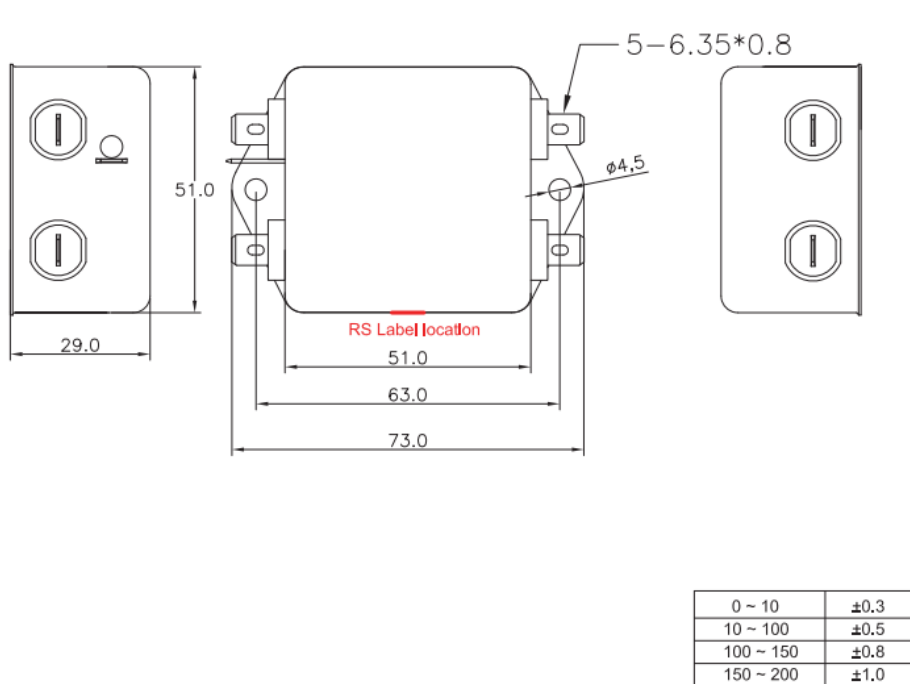
### Protection Category

**according to IEC 60529 IP40**

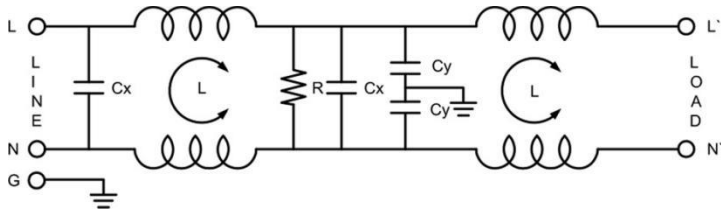
**Approvals**

Declarations	UL;TUV;CE;CQC;
Standards Met	UL1283, CSA C22.2 No.8; IEC/EN 60939,; CQC GB 15288/GB 15287-2008

**Physical Dimensions:**



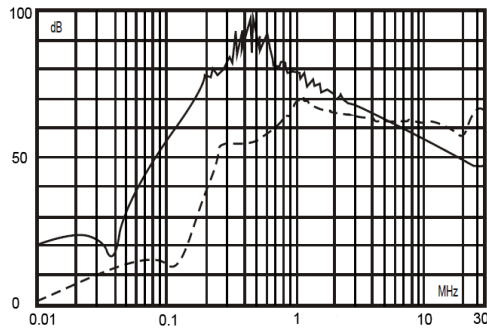
## Electrical Schematic:



## Insertion loss table(In 50ohm system according IEC/CISPR No.17)

———— Common mode      - - - - - Differential mode

6A



## packaging

