

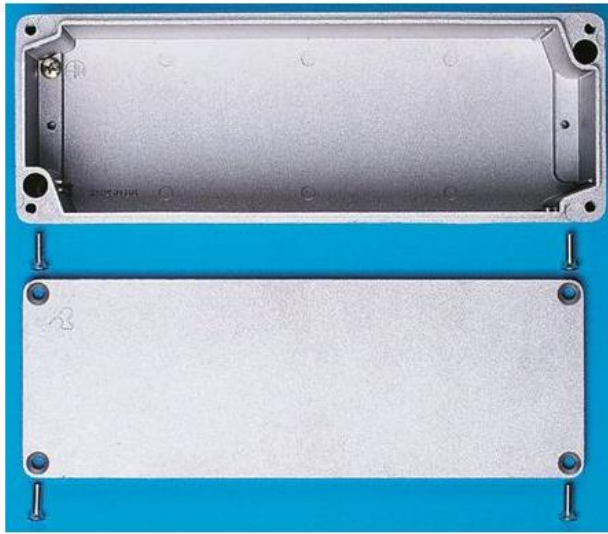


ENGLISH

Datasheet

ELEG Aluminium Enclosure, IP65, 102 x 102 x 81 mm

RS Stock number 282-1180

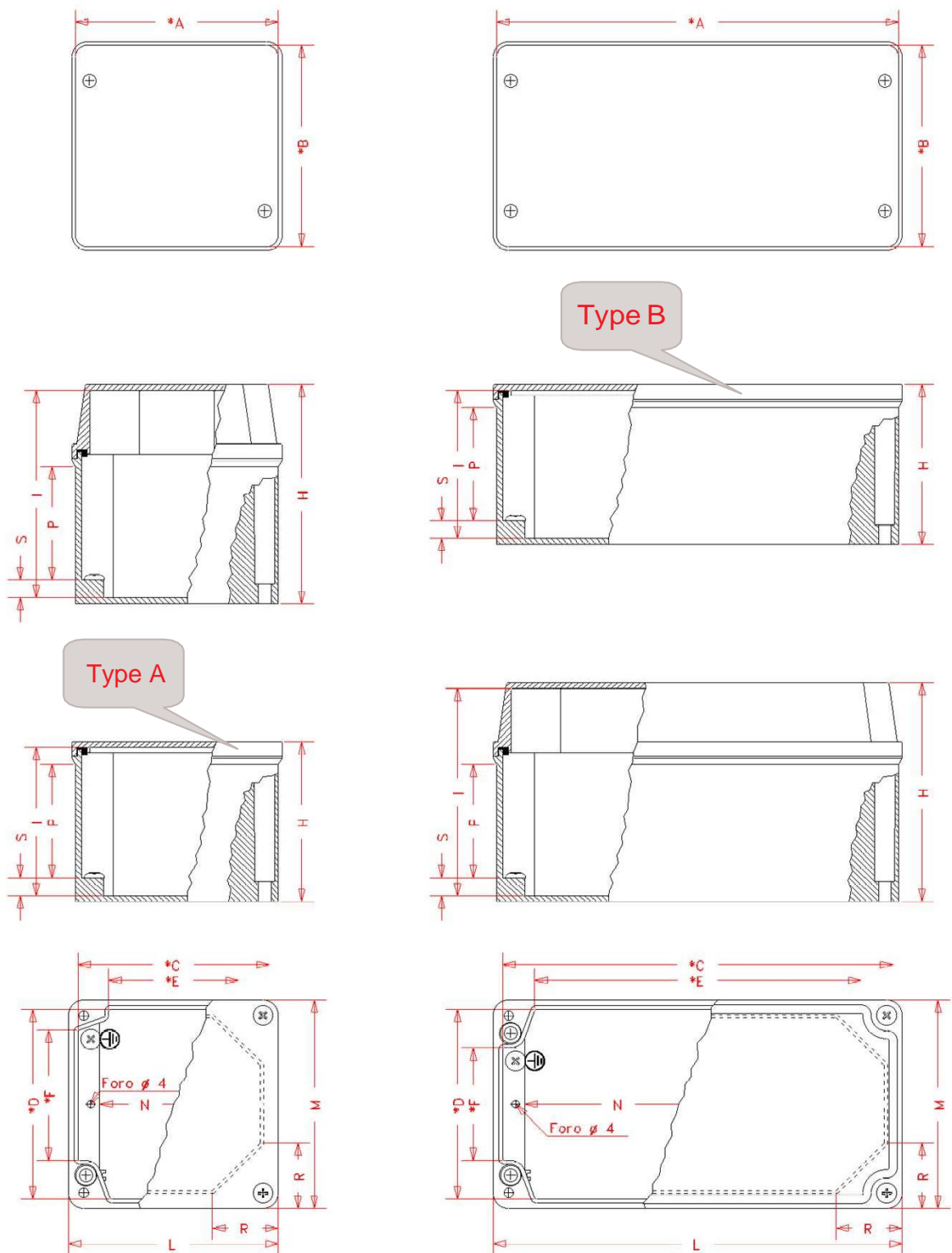


| | |
|---------------------|--------------------------|
| Body Material | Die Cast Aluminium Alloy |
| Colour | Grey |
| External Dimensions | 102 x 102 x 81mm |
| External Height | 81 mm |
| External Length | 102 mm |
| External Width | 102 mm |
| IP Rating | IP65 |
| Lid Colour | Grey |
| Series | ELEG |
| Weight | 2.65kg |



* Useful size

| • Code | Type | * A | * B | H | * C | * D | * E | * F | I | L | M | N | P | R | S |
|----------|------|-----|-----|----|-----|-----|-------|------|------|-----|------|-----|------|---|---|
| 282-1168 | A | 102 | 102 | 61 | 95 | 95 | 63 | 64,4 | 55 | 106 | 106 | 74 | 38 | - | 9 |
| 282-1180 | A | 102 | 102 | 81 | 95 | 95 | 63 | 64,4 | 75 | 106 | 106 | 74 | 58 | - | 9 |
| 282-1196 | A | 122 | 75 | 61 | 115 | 68 | 83 | 38 | 54,5 | 126 | 78,5 | 94 | 38 | - | 9 |
| 282-1203 | A | 122 | 75 | 75 | 115 | 68 | 83 | 38 | 68,5 | 126 | 78,5 | 94 | 52 | - | 9 |
| 434-9898 | A | 130 | 130 | 91 | 123 | 123 | 90 | 90 | 85 | 133 | 133 | 101 | 67,5 | - | 9 |
| 282-1219 | B | 202 | 102 | 61 | 195 | 95 | 164 | 56,5 | 55 | 206 | 106 | 174 | 37,5 | - | 9 |
| 282-1225 | B | 202 | 102 | 81 | 195 | 95 | 164 | 56,5 | 75 | 206 | 106 | 174 | 57,5 | - | 9 |
| 282-1247 | A | 252 | 87 | 61 | 245 | 80 | 213,5 | 50 | 54,5 | 256 | 91 | 224 | 38 | - | 9 |
| 282-1253 | A | 252 | 87 | 75 | 245 | 80 | 213,5 | 50 | 69 | 256 | 91 | 224 | 51,5 | - | 9 |
| 282-1269 | B | 265 | 130 | 91 | 258 | 123 | 227 | 84 | 85 | 268 | 133 | 234 | 67,5 | - | 9 |



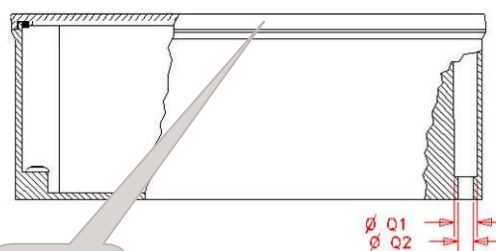
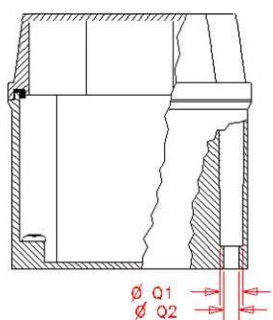
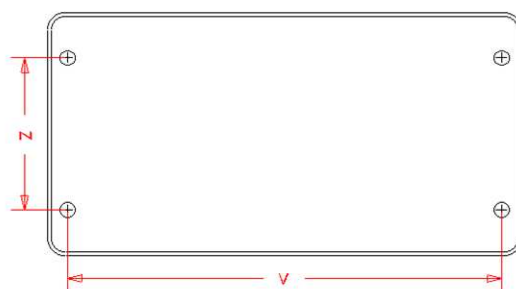
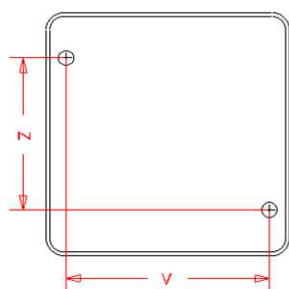
Type A enclosure: flat cover and 2 fixing holes on the bottom.
 Type B enclosure: flat cover and 4 fixing holes on the bottom.



ENGLISH

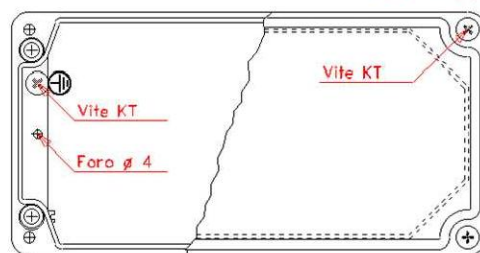
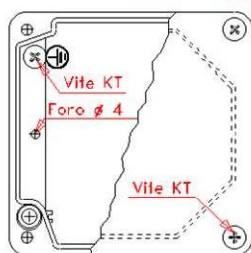
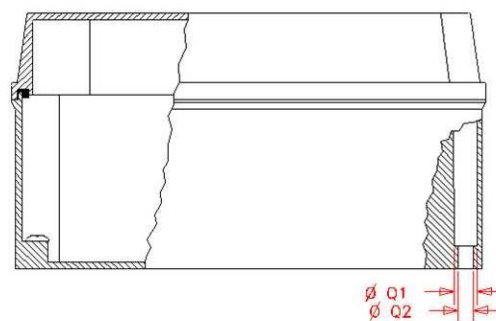
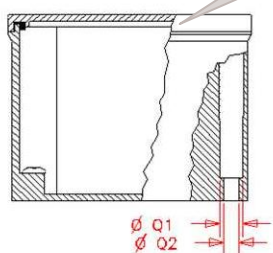
* Useful size

| Code • | Type | Q1 | Q2 | * T1 | * U1 | * T2 | * U2 | W1 | W2 | V | Z | No screws | KC | No screws | KT |
|----------|------|----|----|-------|------|------|------|----|------|-----|-----|-----------|----|-----------|----|
| 282-1168 | A | 10 | 6 | 82,5 | 10 | - | - | 40 | 53,5 | 88 | 72 | 4 | M5 | 1 | M5 |
| 282-1180 | A | 10 | 6 | 82,5 | 10 | - | - | 60 | 73,5 | 88 | 72 | 4 | M5 | 1 | M5 |
| 282-1196 | A | 10 | 6 | 102,5 | 10 | - | - | 40 | 53,5 | 108 | 45 | 4 | M5 | 1 | M5 |
| 282-1203 | A | 10 | 6 | 102,5 | 10 | - | - | 54 | 67,5 | 108 | 45 | 4 | M5 | 1 | M5 |
| 434-9898 | A | 10 | 6 | 110 | 10 | - | - | 70 | 83,5 | 115 | 100 | 4 | M5 | 1 | M5 |
| 282-1219 | B | 10 | 6 | 171 | 10 | 95 | 16 | 40 | 53,5 | 188 | 72 | 4 | M5 | 1 | M5 |
| 282-1225 | B | 10 | 6 | 171 | 10 | 95 | 16 | 60 | 73,5 | 188 | 72 | 4 | M5 | 1 | M5 |
| 282-1247 | A | 10 | 6 | 232,5 | 10 | 80 | 16 | 40 | 53,5 | 238 | 57 | 4 | M5 | 1 | M5 |
| 282-1253 | A | 10 | 6 | 232,5 | 10 | 80 | 16 | 54 | 67,5 | 238 | 57 | 4 | M5 | 1 | M5 |
| 282-1269 | B | 10 | 6 | 232,5 | 10 | 122 | 16 | 70 | 83,5 | 248 | 97 | 4 | M5 | 1 | M5 |



Type B

Type A



Guides for printed circuit.

