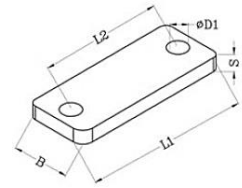
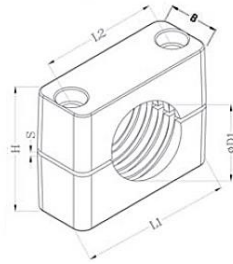
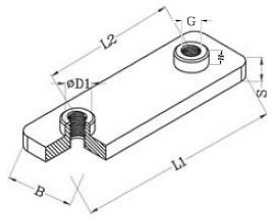


G1 HEAVY SERIES



Series	Order Code	D1 Pipe O.D.	Inch Bore	Inch O.D.	Clamp Body					Cover Plate				
					L1	L2	H	S	B	L1	L2	S	B	D1
3S	PC-H**-1-3S-006-*	6			55	33	30.5	0.6	30.5	55	33	8	30	11
	PC-H**-1-3S-006.4-*	6.4		1/4										
	PC-H**-1-3S-008-*	8		5/16										
	PC-H**-1-3S-009.5-*	9.5		3/8										
	PC-H**-1-3S-010-*	10	1/8											
	PC-H**-1-3S-012-*	12												
	PC-H**-1-3S-012.7-*	12.7		1/2										
	PC-H**-1-3S-013.5-*	13.5	1/4											
	PC-H**-1-3S-014-*	14												
	PC-H**-1-3S-015-*	15												
	PC-H**-1-3S-016-*	16		5/8										
	PC-H**-1-3S-017.2-*	17.2	3/8											
PC-H**-1-3S-018-*	18													
4S	PC-H**-1-4S-019-*	19		3/4	70	45	46.5	0.6	30.5	70	45	8	30	11
	PC-H**-1-4S-020-*	20												
	PC-H**-1-4S-021.3-*	21.3	1/2											
	PC-H**-1-4S-022-*	22		7/8										
	PC-H**-1-4S-025-*	25												
	PC-H**-1-4S-025.4-*	25.4		1										
	PC-H**-1-4S-026.9-*	26.9	3/4											
	PC-H**-1-4S-028-*	28												
	PC-H**-1-4S-030-*	30												
	PC-H**-1-5S-030-*	30												
PC-H**-1-5S-032-*	32		1 1/4											
PC-H**-1-5S-033.7-*	33.7	1												
PC-H**-1-5S-035-*	35													
PC-H**-1-5S-038-*	38		1 1/2											
PC-H**-1-5S-040-*	40													
PC-H**-1-5S-042-*	42	1 1/4												
6S	PC-H**-1-6S-038-*	38		1 1/2	115	90	87	2	45	115	90	10	45	14
	PC-H**-1-6S-042-*	42	1 1/4											
	PC-H**-1-6S-044.5-*	44.5		1 3/4										
	PC-H**-1-6S-048.3-*	48.3	1 1/2											
	PC-H**-1-6S-050.8-*	50.8		2										
	PC-H**-1-6S-055-*	55												
	PC-H**-1-6S-057-*	57		2 1/4										
	PC-H**-1-6S-060.3-*	60.3	2											
	PC-H**-1-6S-063.5-*	63.5		2 1/2										
	PC-H**-1-6S-065-*	65												
PC-H**-1-6S-070-*	70		2 3/4											
7S	PC-H**-1-7S-065-*	65			152	122	120	2	60	152	122	10	60	19
	PC-H**-1-7S-070-*	70												
	PC-H**-1-7S-073-*	73		2 7/8										
	PC-H**-1-7S-075-*	75												
	PC-H**-1-7S-076.1-*	76.1	2 1/2	3										
	PC-H**-1-7S-080-*	80												
	PC-H**-1-7S-082.5-*	82.5		3 1/4										
	PC-H**-1-7S-088.9-*	88.9	3	3 1/2										
PC-H**-1-8S-088.9-*	88.9	3	3 1/2											
8S	PC-H**-1-8S-100-*	100			206	168	168	2	80	206	168	15	80	22
	PC-H**-1-8S-102-*	102	3 1/2											
	PC-H**-1-8S-108-*	108		4 1/4										
	PC-H**-1-8S-114-*	114	4											
	PC-H**-1-8S-127-*	127		5										
	PC-H**-1-8S-133-*	133		5 1/4										
	PC-H**-1-9S-133-*	133		5 1/4										
9S	PC-H**-1-9S-140-*	140	5		251	205	200	3	91	251	205	15	90	26
	PC-H**-1-9S-152-*	152		6										
	PC-H**-1-9S-159-*	159		6 1/4										
	PC-H**-1-9S-165-*	165		6 1/2										
	PC-H**-1-9S-168-*	168	6											
	PC-H**-1-10S-168-*	168	6											
10S	PC-H**-1-10S-177.8-*	177.8		7	326	265	270	3	120	320	265	25	120	35
	PC-H**-1-10S-193.7-*	193.7		7 5/8										
	PC-H**-1-10S-216-*	216		8 1/2										
	PC-H**-1-10S-219-*	219	8											
	PC-H**-1-11S-219-*	219	8											
11S	PC-H**-1-11S-273-*	273	10		470	395	410	8	162	470	395	30	160	35
	PC-H**-1-11S-324-*	324	12											
	PC-H**-1-12S-356-*	356	14											
12S	PC-H**-1-12S-406-*	406	16		630	534	530	20	182	630	534	30	180	35

G1 HEAVY SERIES



Series	Order Code	D1 Pipe O.D.	Inch Bore	Inch O.D.	Weld Plate						Bolt	
					L1	L2	B	S	H	G		D1
3S	PC-H**-1-3S-006.*	6			74	33	30	8	8	M10	18	M10 x 45
	PC-H**-1-3S-006.4.*	6.4		1/4								
	PC-H**-1-3S-008.*	8		5/16								
	PC-H**-1-3S-009.5.*	9.5		3/8								
	PC-H**-1-3S-010.*	10	1/8									
	PC-H**-1-3S-012.*	12										
	PC-H**-1-3S-012.7.*	12.7		1/2								
	PC-H**-1-3S-013.5.*	13.5	1/4									
	PC-H**-1-3S-014.*	14										
	PC-H**-1-3S-015.*	15										
	PC-H**-1-3S-016.*	16		5/8								
	PC-H**-1-3S-017.2.*	17.2	3/8									
PC-H**-1-3S-018.*	18											
4S	PC-H**-1-4S-019.*	19		3/4	86	45	30	8	8	M10	18	M10 x 60
	PC-H**-1-4S-020.*	20										
	PC-H**-1-4S-021.3.*	21.3	1/2									
	PC-H**-1-4S-022.*	22		7/8								
	PC-H**-1-4S-025.*	25										
	PC-H**-1-4S-025.4.*	25.4		1								
	PC-H**-1-4S-026.9.*	26.9	3/4									
	PC-H**-1-4S-028.*	28										
	PC-H**-1-4S-030.*	30										
	PC-H**-1-4S-030.*	30										
5S	PC-H**-1-5S-030.*	30			100	60	30	8	8	M10	18	M10 x 70
	PC-H**-1-5S-032.*	32		1 1/4								
	PC-H**-1-5S-033.7.*	33.7	1									
	PC-H**-1-5S-035.*	35										
	PC-H**-1-5S-038.*	38		1 1/2								
	PC-H**-1-5S-040.*	40										
6S	PC-H**-1-5S-042.*	42	1 1/4		140	90	45	10	8	M12	20	M12 x 100
	PC-H**-1-6S-038.*	38		1 1/2								
	PC-H**-1-6S-042.*	42	1 1/4									
	PC-H**-1-6S-044.5.*	44.5		1 3/4								
	PC-H**-1-6S-048.3.*	48.3	1 1/2									
	PC-H**-1-6S-050.8.*	50.8		2								
	PC-H**-1-6S-055.*	55										
	PC-H**-1-6S-057.*	57		2 1/4								
	PC-H**-1-6S-060.3.*	60.3	2									
	PC-H**-1-6S-063.5.*	63.5		2 1/2								
7S	PC-H**-1-6S-065.*	65			180	122	60	10	12	M16	24	M16 x 130
	PC-H**-1-6S-070.*	70										
	PC-H**-1-7S-073.*	73		2 7/8								
	PC-H**-1-7S-075.*	75										
	PC-H**-1-7S-076.1.*	76.1	2 1/2	3								
	PC-H**-1-7S-080.*	80										
	PC-H**-1-7S-082.5.*	82.5		3 1/4								
	PC-H**-1-7S-088.9.*	88.9	3	3 1/2								
8S	PC-H**-1-7S-088.9.*	88.9	3	3 1/2	226	168	80	15	18	M20	30	M20 x 190
	PC-H**-1-8S-088.9.*	88.9	3	3 1/2								
	PC-H**-1-8S-100.*	100										
	PC-H**-1-8S-102.*	102	3 1/2									
	PC-H**-1-8S-108.*	108		4 1/4								
	PC-H**-1-8S-114.*	114	4									
	PC-H**-1-8S-127.*	127		5								
9S	PC-H**-1-8S-133.*	133		5 1/4	270	205	90	15	21	M24	35	M24 x 220
	PC-H**-1-8S-133.*	133		5 1/4								
	PC-H**-1-9S-133.*	133										
	PC-H**-1-9S-140.*	140	5									
	PC-H**-1-9S-152.*	152		6								
	PC-H**-1-9S-159.*	159		6 1/4								
10S	PC-H**-1-9S-165.*	165		6 1/2	340	265	120	25	21	M30	45	M30 x 300
	PC-H**-1-9S-168.*	168	6									
	PC-H**-1-10S-168.*	168	6									
	PC-H**-1-10S-177.8.*	177.8		7								
	PC-H**-1-10S-193.7.*	193.7		7 5/8								
11S	PC-H**-1-10S-216.*	216		8 1/2	520	395	160	30	38	M30	50	M30 x 450
	PC-H**-1-11S-219.*	219	8									
	PC-H**-1-11S-273.*	273	10									
12S	PC-H**-1-11S-324.*	324	12		680	534	180	30	38	M30	50	M30 x 560
	PC-H**-1-12S-356.*	356	14									
	PC-H**-1-12S-406.*	406	16									