

## FEATURES

- Insulation collar accepts two multi-stranded wires
- Excellent electrical connection
- Reduces short circuits
- DIN Colour coded collar for easy ferrule size identification
- Nylon insulated collar for reduced leakage, creepage and gas intrusion
- Tin plated copper tube for excellent conductivity
- Crimped terminal can be repeatedly inserted and removed without degrading end of the wire

## RS PRO Insulated Crimp Bootlace Ferrule, 14mm Pin Length, 6.5mm Pin Diameter, 2 x 10mm<sup>2</sup> Wire Size, Red

RS Stock No.: 3118019



RS Professionally Approved Products bring to you professional quality parts across all product categories. Our product range has been tested by engineers and provides a comparable quality to the leading brands without paying a premium price.

## Product Description

From RS PRO a range of high-quality French colour coded bootlace ferrules (also known as cord end terminals) for providing a clean end termination to multi-stranded wires. These reliable wire ferrules ensure that you have a positive connection when connecting wires to terminal blocks and captive terminals

### Suitable Crimping Tools

For ferrules with a wire size range of 0.5 to 6 mm<sup>2</sup> use crimping tool frame stock number [848-391](#) with die set [848-420](#)

For ferrules with a wire size range of 10 to 25 mm<sup>2</sup> use crimping tool stock number [297-2935](#)

## General Specifications

<b>Number of Entries</b>	1
<b>Insulation</b>	Insulated
<b>Insulation Material</b>	Nylon
<b>Colour</b>	Red
<b>Contact Material</b>	Copper
<b>Contact Plating</b>	Tin
<b>Terminal Material</b>	Copper tube
<b>Surface Treatment</b>	Tin plate
<b>Insulation colour</b>	Red
<b>Ferrule Type</b>	French
<b>Pack Quantity</b>	10
<b>Application</b>	Bootlace ferrules are used on multi-stranded wires that are being inserted into screw terminals and terminal blocks. Applications include consumer units, circuit breakers, electrical control panels and any equipment where there is a requirement for a multi-stranded wire connection

## Electrical Specifications

<b>Current Rating</b>	9A
<b>Voltage Rating</b>	600V

## Mechanical Specifications

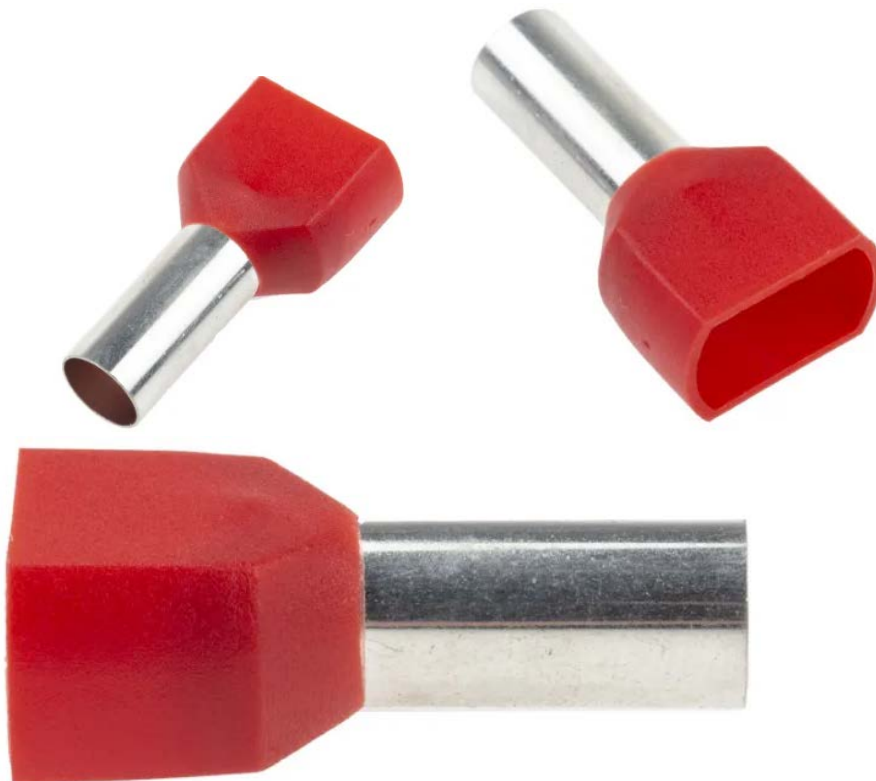
Maximum Wire Size (mm <sup>2</sup> )	2x10
Maximum Wire Size (AWG)	2x8
Pin Diameter	6.5mm
Pin Length	14mm
Overall Length	26.6mm
Weight	0.0520kg

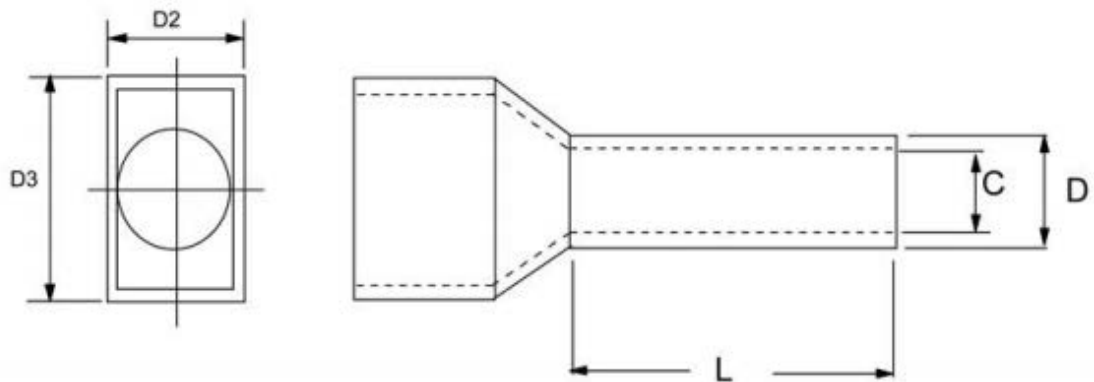
## Operation Environment Specifications

Maximum Temperature	105°C
---------------------	-------

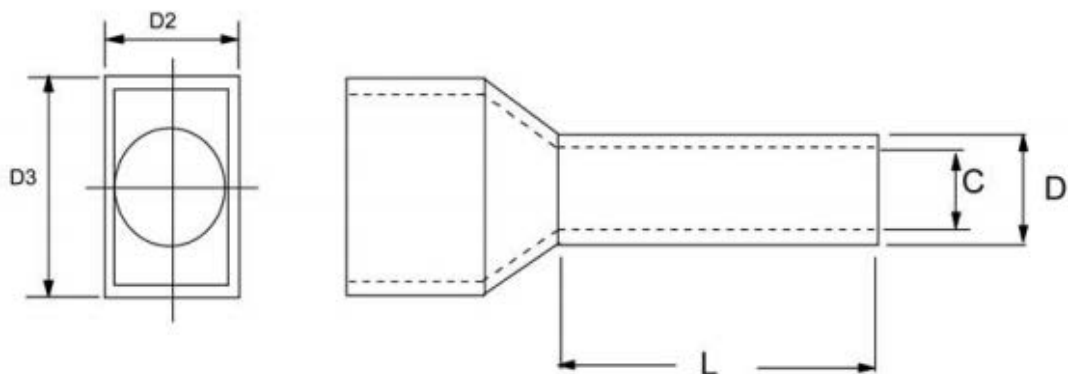
## Approvals

Compliance/Certifications	CE / UR / cUR
---------------------------	---------------





Stock Number	Wire Size mm <sup>2</sup>	L	C	D	D2	D3	Colour
311-7971	2 x 0.5	8	1.2	1.5	4.7	2.5	WHITE
184-9654	2 x 0.75	8	1.5	1.8	3.5	602	GREY
184-9660	2 x 1	8			4	6	RED
184-9676	2 x 1.5	8	2	2.3	4.2	7.2	BLACK
184-9682	2 x 2.5	8	2.5	2.9	5	8.5	BLUE
311-7993	2 x 4	12	3.4	3.8	5.7	9.2	GREY
311-8003	2 x 6	14	4.5	4.9	6.8	10.5	YELLOW
311-7971	2 x 10	14	6.1	6.5	8	13	RED
184-9654	2 x 16	14	8.5	8.7	10.5	19.3	BLUE



Stock Number	Wire Size mm <sup>2</sup>	L	C	D	D2	D3	Colour
311-7971	2 x 0.5	8	1.2	1.5	4.7	2.5	WHITE
184-9654	2 x 0.75	8	1.5	1.8	3.5	602	GREY
184-9660	2 x 1	8			4	6	RED
184-9676	2 x 1.5	8	2	2.3	4.2	7.2	BLACK
184-9682	2 x 2.5	8	2.5	2.9	5	8.5	BLUE
311-7993	2 x 4	12	3.4	3.8	5.7	9.2	GREY
311-8003	2 x 6	14	4.5	4.9	6.8	10.5	YELLOW
311-7971	2 x 10	14	6.1	6.5	8	13	RED
184-9654	2 x 16	14	8.5	8.7	10.5	19.3	BLUE