



**APPLICATION GUIDE**  
**Full-Flat Double Pole Switches**

**CAT. NO.**

E8431D20

E8431D20/2

E8432D20

E8431D32

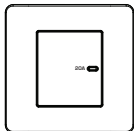
E8431D45

E84T31D45N

**ZEN**celo

Thank you for choosing **Schneider Electric** ZENcelo Full-Flat Double Pole Switches. To ensure proper application of our product, please read through the following information before installation and use.

**This application guide applies to the following products.**



**Cat.no.**

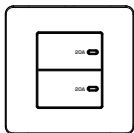
E8431D20

**Description**

20A 1-Gang Full-Flat Double Pole Switch

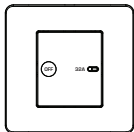
E8431D20/2

20A 1-Gang 2 Way Full-Flat Double Pole Switch



E8432D20

20A 2-Gang Full-Flat Double Pole Switch

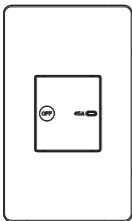


E8431D32

32A 1-Gang Full-Flat Double Pole Rocker Switch

E8431D45

45A 1-Gang Full-Flat Double Pole Rocker Switch



E84T31D45N

45A 1-Gang (Twin Gang Size) Full-Flat  
Double Pole Rocker Switch with Neon

### **ON/OFF INDICATION**

For E8431D20 / E8432D20

- Built-in neon indicator (Marigold color) for "On" status

For E8431D32 / E8431D45 / E84T31D45N

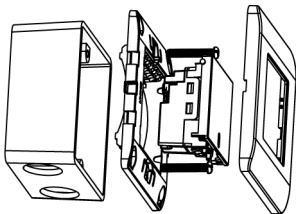
- Built-in neon indicator (Marigold color) for "On" status by pressing right (32A/45A); turn off by pressing left (OFF)

## SPECIFICATIONS

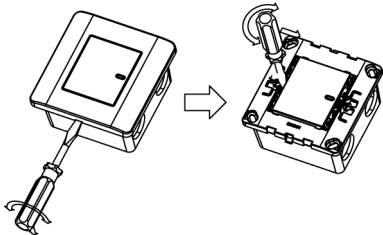
Voltage	:250VAC		
Load Type	:20A / 32A / 45A		
Dimension	:For E8431D20, E8432D20, E8431D32, E8431D45 & E8431D20/2-87mm x 87mm (with Wall Plate) For E84T31D45N - 147mm x 87mm (with Wall Plate)		
Mounting Centre Compliance	:For E8431D20, E8432D20, E8431D32, E8431D45 & E8431D20/2-60.3mm ( wall box with 35mm depth or above) For E84T31D45N - 120.6mm ( wall box with 35mm depth or above) :For E8431D20, E8432D20 - IEC60669-1      BSEN60669-1      GB16915.1 		
	For E8431D32, E8431D45 - IEC60669-1      BSEN60669-1		
	For E84T31D45N - IEC60669-1      BSEN60669-1		
	For E8431D20/2 - IEC60669-1      MS IEC 60669-1      SS227-1		

## MOUNTING INSTRUCTION

Please refer to the following diagram for proper installation.



Remarks: For surround mounting, align the clip locks on the faceplate and press firm on the surround. Complete engagement of the clip locks is indicated by a clear "click" sound.

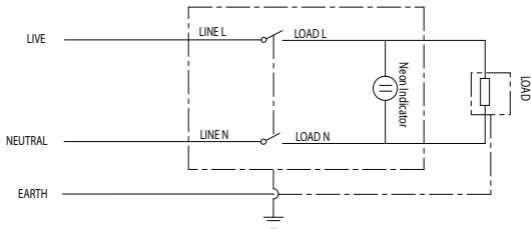


## IMPORTANT NOTE

Please check your local wiring regulations before installation.

## WIRING DIAGRAMS

For E8431D20, E8432D20, E8431D32, E8431D45 & E84T31D45N



For E8431D20/2

