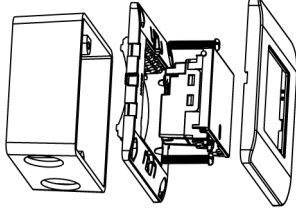
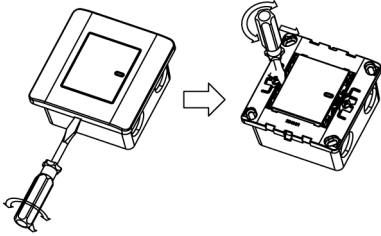


MOUNTING INSTRUCTION

Please refer to the following diagram for proper installation.



Remarks: For surround mounting, align the clip locks on the faceplate and press firm on the surround. Complete engagement of the clip locks is indicated by a clear "click" sound.



IS18043



APPLICATION GUIDE Full-Flat Switches

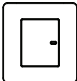
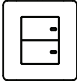


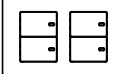
CAT. NO.

E8431/1
E8432/1
E8433/1
E8434/1
E84T34/1

ZENcelo

Thank you for choosing **Schneider Electric ZENcelo Full-Flat Switch**.
To ensure proper application of our product, please read through the following information before installation and use.

This application guide applies to the following products.

	Cat.no.	Description
	E8431/1	1-Gang 1-Way Full-Flat Switch
	E8432/1	2-Gang 1-Way Full-Flat Switch
	E8433/1	3-Gang 1-Way Full-Flat Switch
	E8434/1	4-Gang 1-Way Full-Flat Switch
	E84T34/1	2+2 Gang 1-Way Full-Flat Switch

ON/OFF INDICATION

"Ondicator" for clear On/Off status indication - Marigold color for "On"

SPECIFICATIONS

Voltage	:250VAC
Load Type	:16AX/20A
Dimension	:87mm x 87mm (For E8431/1, E8432/1, E8433/1) 147mm x 87mm (For E84T34/1)
Mounting Centre	:60.3mm (For E8431/1, E8432/1, E8433/1) 120.6mm (For E84T34/1) (wall box with 35mm depth or above)
Compliance	: For E8431/1, E8432/1, E8433/1 IEC60669-1 BSEN60669-1 MS IEC60669-1 GB16915.1 SS227-1 For E84T34/1 IEC60669-1 BSEN60669-1

IMPORTANT NOTE

Please check your local wiring regulations before installation.

WIRING DIAGRAMS

