

Datasheet

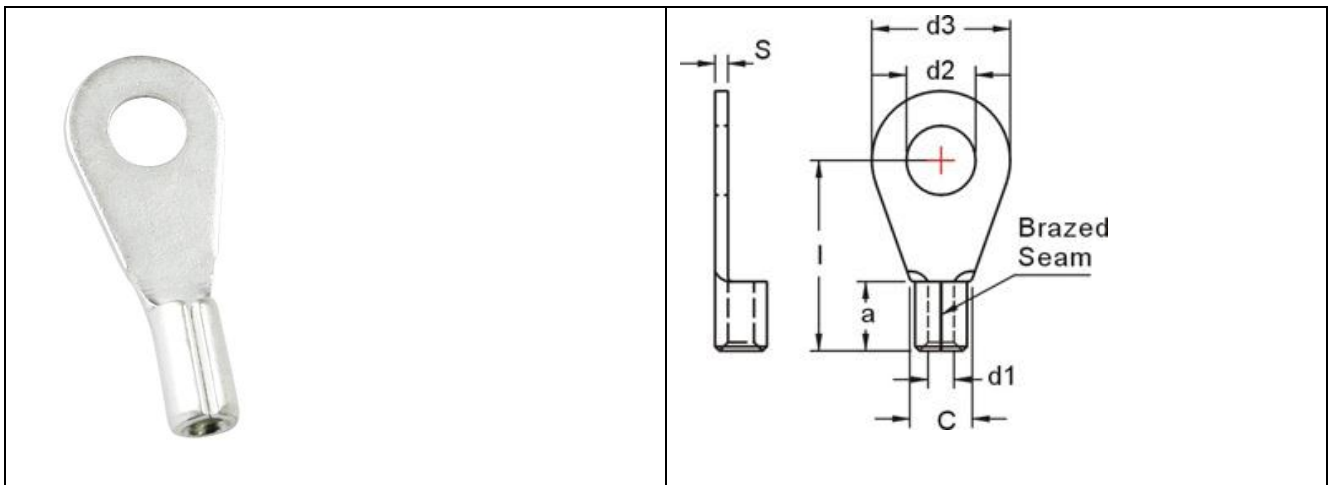
RS PRO NON-INSULATED DIN 46234 RING TERMINALS

Stock number: 178-7255

MAXIMUM ELECTRIC CURRENT:

A.W.G.	26	24	22
AMP.	5.5	7	9

TERMINAL MATERIAL: COPPER



WIRE RANGE A.W.G. mm ²	ITEM NO.	STUD SIZE		DIMENSION (mm)					
		d2	D3	I	A	C	d1	S	
26-22 A.W.G.	178-7255	#4	3.2	5	10	4	2	1	0.5
0.2-0.5 mm ²									