

Pushbutton Switches

Illuminated, Round

multicomp PRO



Specifications

Contact Configuration	: DPST
Actuator	: Illuminated, Round
Terminal	: Quick Connect Tab
Lamp Voltage	: 250VAC
Ambient Temperature	: Terminal Side: -20°C to +85°C Actuating Side: 20°C to +55°C
Storage Temperature	: -30°C to +85°C
Atmospheric Humidity	: 85% Max.
Actuating Force	: 3 ~ 8N
Temperature Rise	: 30°C Max. @ Terminal
Safety Approval	: UL, VDE
Solder Ability	: 350°C Max., 3s

Electrical Specifications

Parameter	VDE	UL
Electrical Rating	10A (4A), 250V AC	16A, 125V/250V AC
Electrical Life Endurance	≥ 6000 times	≥ 10000 times
Contact Resistance	<20mΩ	
Insulation Resistance	>1000MΩ	
Dielectric Strength	>1500V/minute	>1250V/minute
Temperature Rise	55°C	30°C
Push forces for TABS	≥6kg	
Pull forces for TABS	≥10kg	
Horizontal direction forces for TABS	≥2kg	
Operating Force	1200g ±300g	

Material Specifications

Housing	: Polyamide 6.6, Black
Contacts	: Silver Alloy
Terminal	: Brass, Silver Plated
Spring	: SWC (Chromated Steel Wire)
Movable Arm	: C2680 (Brass)
Bracket	: Polyamide 6.6

Newark.com/multicomp-pro
Farnell.com/multicomp-pro
Element14.com/multicomp-pro

multicomp PRO

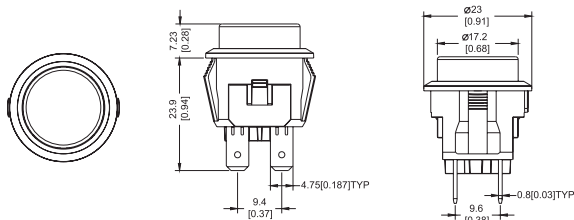
Pushbutton Switches Illuminated, Round

multicomp PRO

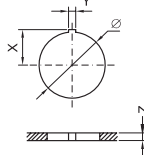
Switch Function

Poles & Throw	Rocker Position (): Momentary			Part Number
	Down	Middle	Up	
DPST	On	None	Off	MCLC210-7-K-M-ET-2B
DPST	On	None	Off	MCLC210-7-K-D-ET-2B
DPST	On	None	Off	MCLC210-7-K-Y-ET-2B
DPST	(On)	None	Off	MCLC210-8-K-M-ET-2B
DPST	(On)	None	Off	MCLC210-8-K-D-ET-2B

Dimension

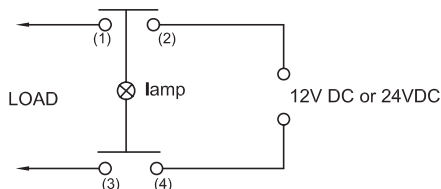
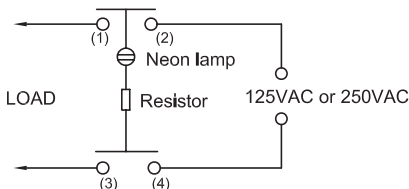


Panel Cut Out



Panel Cut Out			
Z	Y	X	Ø
0.7 ~ 1.25	2	11	Ø20.5
1.25 ~ 2	2	11	Ø20.5
2 ~ 3	2	11	Ø20.5

Circuits for Switch with Lamp



Part Number Table

Description	Part Number
Pushbutton Switch, Illuminated, Round, DPST, QC, Green	MCLC210-7-K-M-ET-2B
Pushbutton Switch, Illuminated, Round, DPST, QC, Red	MCLC210-7-K-D-ET-2B
Pushbutton Switch, Illuminated, Round, DPST, QC, Yellow	MCLC210-7-K-Y-ET-2B
Pushbutton Switch, Illuminated, Round, DPST, QC, Green	MCLC210-8-K-M-ET-2B
Pushbutton Switch, Illuminated, Round, DPST, QC, Red	MCLC210-8-K-D-ET-2B

Important Notice : This data sheet and its contents (the "Information") belong to the members of the AVNET group of companies (the "Group") or are licensed to it. No licence is granted for the use of it other than for information purposes in connection with the products to which it relates. No licence of any intellectual property rights is granted. The Information is subject to change without notice and replaces all data sheets previously supplied. The Information supplied is believed to be accurate but the Group assumes no responsibility for its accuracy or completeness, any error in or omission from it or for any use made of it. Users of this data sheet should check for themselves the Information and the suitability of the products for their purpose and not make any assumptions based on information included or omitted. Liability for loss or damage resulting from any reliance on the Information or use of it (including liability resulting from negligence or where the Group was aware of the possibility of such loss or damage arising) is excluded. This will not operate to limit or restrict the Group's liability for death or personal injury resulting from its negligence. Multicomp Pro is the registered trademark of Premier Farnell Limited 2019.

Newark.com/multicomp-pro
Farnell.com/multicomp-pro
Element14.com/multicomp-pro

multicomp PRO