

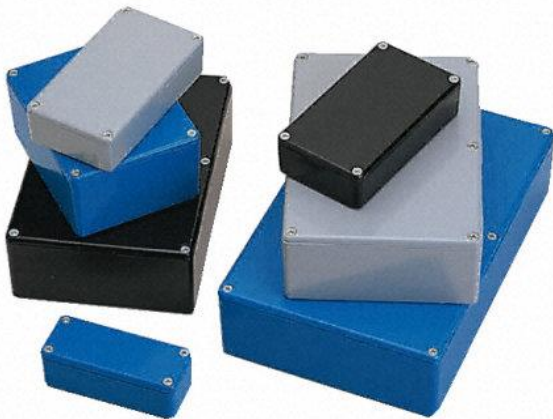


ENGLISH

Datasheet

Aluminium Enclosure, IP66, 89.1 x 35 x 30.3mm

RS Stock number 517-4241



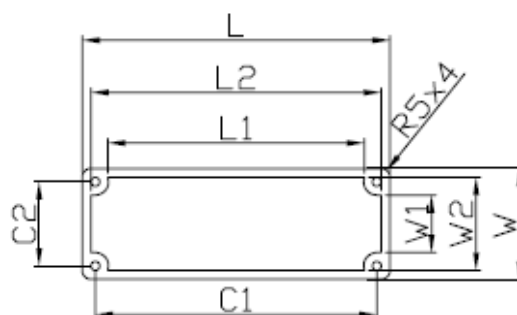
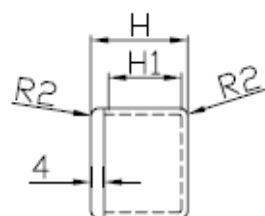
Description:

IP65 Powder Coated

- Diecast aluminium alloy (LM2, BS1490)
- Provided with a neoprene self-adhesive seal which gives protection to IP65 when fitted
- Stainless steel M3.5 fixing screws
- Minimum wall thickness 1.6 mm

Specifications:

Colour:	Black
Body Material:	Die Cast Aluminium
External Dimensions:	89.1 (length) x 35 (width) x 30.3 (height)mm
IP Rating:	IP66
Lid Colour:	Black



L	W	H	C1	C2	L1	L2	W1	W2	H1
89.1	35.0	30.3	79.3	25.3	72.8	85.9	18.7	31.9	24.8