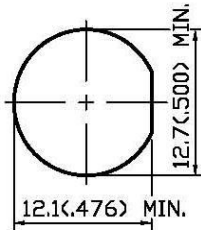
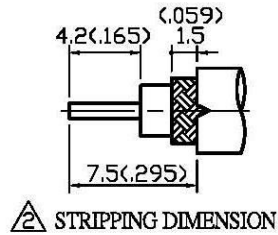


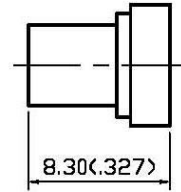
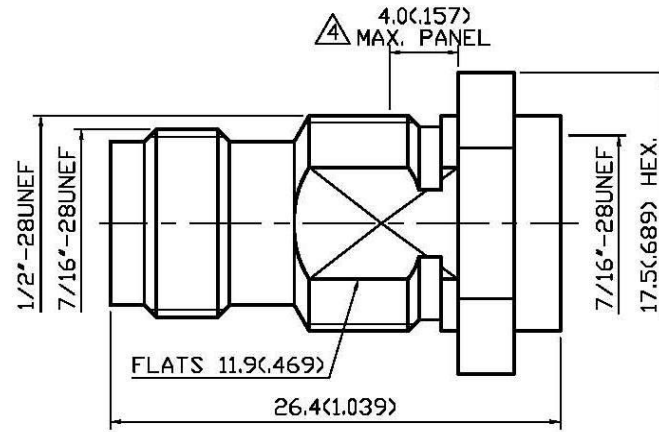
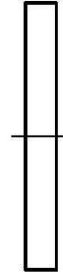
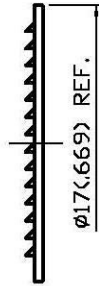
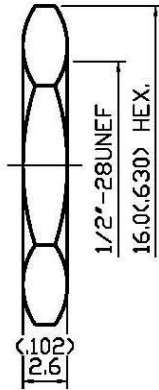
NO	DESCRIPTION	DATE
①	BACKGROUND FORMAT UPDATED	04.30.03'
②	ADD STRIPPING DIMENSION	03.04.05'
③	BACKGROUND FORMAT UPDATED 5.9 → 5.9 REF.	08.24.11'
④	WORKING VOLTAGE → VOLTAGE RATING DEL. PROOF VOLTAGE, ADD VSWR ADD 4.0 MAX. PANEL	10.28.14'



MOUNTING HOLE



STRIPPING DIMENSION



1.0 ELECTRICAL

- 1.1 FREQUENCY RANGE: DC-11 GHz
- 1.2 NOMINAL IMPEDANCE: 50 OHMS
- 1.3 VOLTAGE RATING: 500 VOLTS MAX. ④
- 1.4 VSWR: 1.5 MAX. ④

2.0 MATERIALS

- 2.1 BODIES: BRASS PER JIS-C3604
- 2.2 CENTER CONTACT: BERYLLIUM COPPER PER ASTM B196 UNS C17300
- 2.3 INSULATION: TEFLON PER ASTM D1457 AND ASTM D1710

3.0 FINISHES AND OTHERS

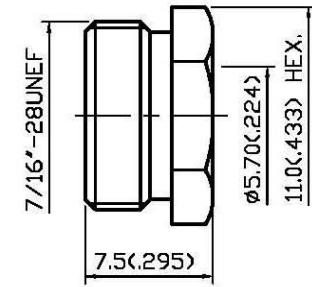
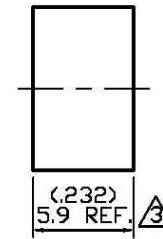
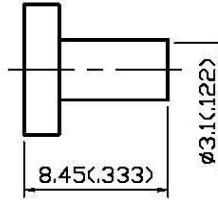
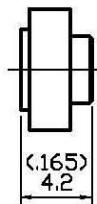
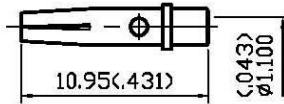
3.1 SEE BELOW TABLE FOR DETAILS.

4.0 MECHANICAL

- 4.1 INTERFACE IN ACCORDANCE WITH: MIL-STD-348A
- 4.2 FOR USE WITH RG58U OR SIMILAR STYLE CABLE
- 4.3 CABLE ATTACHMENT: OUTER: CLAMP, INNER: SOLDER

5.0 ENVIRONMENTAL

5.1 OPERATING TEMPERATURE RANGE: -85° C TO +185° C



NO	DESCRIPTION	MATERIAL	Q'TY	FINISH
11	NUT II	BRASS	1	SILVER 70 μ" MIN.
10	WASHER II	BRASS	1	SILVER 70 μ" MIN.
9	GASKET II	SILICONE	1	RED
8	BRAID CLAMP	BRASS	1	SILVER 70 μ" MIN.
7	INSULATION II	TEFLON	1	NONE
6	CENTER CONTACT	BERYLLIUM COPPER	1	SILVER 70 μ" MIN.
5	INSULATION I	TEFLON	1	NONE
4	BODY	BRASS	1	SILVER 70 μ" MIN.
3	GASKET I	SILICONE	1	NONE
2	WASHER I	STEEL	1	SILVER 70 μ" MIN.
1	NUT I	BRASS	1	SILVER 70 μ" MIN.



APPROVED by _____ DATE: _____

DESCRIPTION		TOLERANCE		品名		15-04-4 T.S.S 58U		DATE	版次	REV.
製圖	Yooko	.X	±0.2	TITLE	ROHS COMPLIANT (500)		日期	11.01.00'	A-4	
檢圖	Arc	.XX	±0.1	單位	mm(in)	DWG.NO.	15-0143			
認定	Angela	.XXX	±0.05	比例	SCALE					
		ANGLE	±5°		3:1					