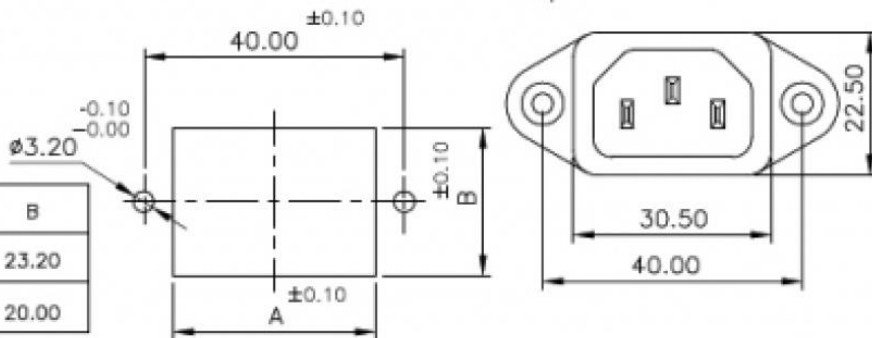
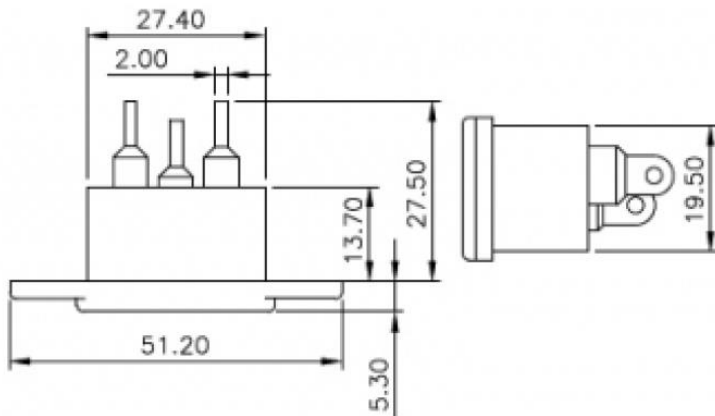


Datasheet

IEC Screw Mounting Inlet

RS Stock 896-2139

Dimensions: (mm)



PANEL CUTOUT	A	B
REAR MOUNTING	31.20	23.20
FRONT MOUNTING	28.00	20.00

Specifications

Current & voltage rating:	10Amp (VDE), 15Amp (UL, CSA), 250VAC
Product Description:	IEC Inlet with screw mounting
Panel thickness:	NA
Permissible temperature - For soldering:	270 deg.C for 5 seconds max.
Permissible temperature - With/without load:	0 to 70deg. C
Approvals:	UL(C, US), VDE, CE
Reference Standard:	IEC 60320-1
Material - Body:	Nylon-6, 20% GF, V2
Material - Terminals:	Copper Alloy, Tin plating
Terminals:	Solder-type
Mounting:	Panel, Screw type
HV Breakdown test for 1 Minute:	2 KVAC
Insulation Resistance at 500 VDC:	1000 Mohms min.