

## Datasheet

### SPDT PCB Slide Switch

RS Stock number 734-7321



#### SPECIFICATIONS

**MECHANICAL LIFE:** 30,000 make-and-break cycles.

**CONTACT RESISTANCE:** 10m $\Omega$  max. initial @ 2-4VDC  
100mA for both silver and gold plated contacts.

**INSULATION RESISTANCE:** 1,000M $\Omega$  min.

**DIELECTRIC STRENGTH:** 1,000 V RMS@sea level.

**OPERATING TEMPERATURE:** -30°C to 85°C.

#### MATERIALS

**CASE:** Dially phthalate (DAP) (UL94v-0).

**ACTUATOR:** Nylon, black std.

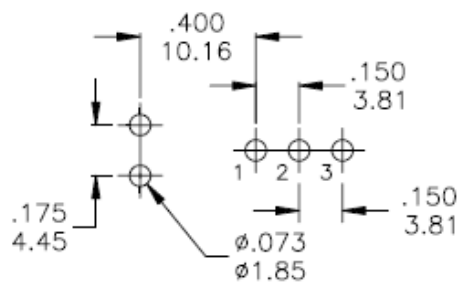
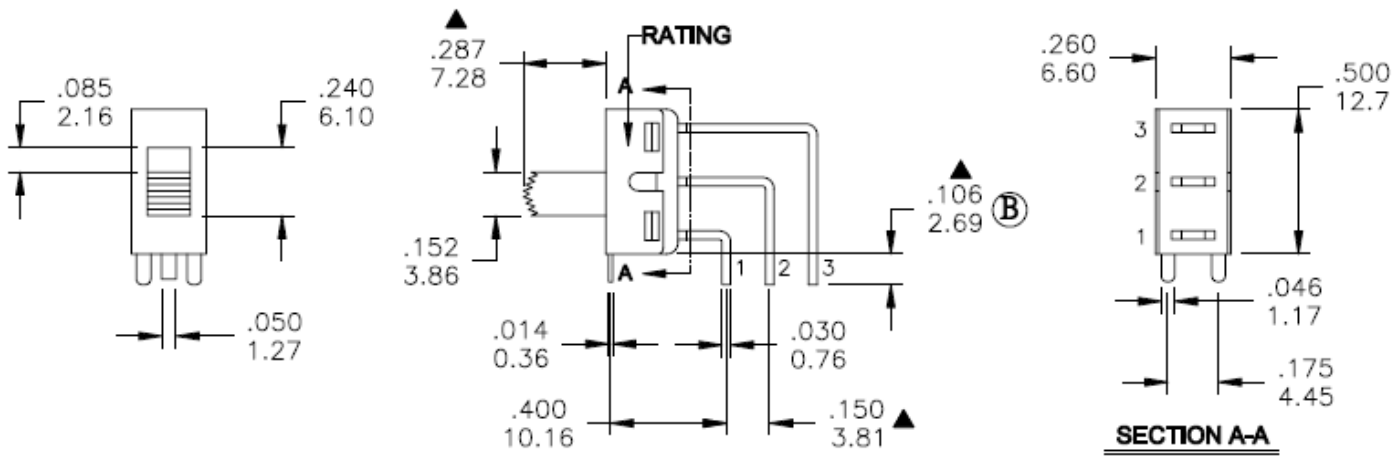
**HOUSING:** Stainless Steel.

**CONTACT:** Silver or gold plated.

**TERMINAL SEAL:** Epoxy.

**RoHS:** 2002/95/EC

Dimensions – inch  
mm



Model No.	POS.1	POS.2	POS.3
5MS1	ON	NONE	ON
Term. Comm.	2-1	N/A	2-3
SCHEMATIC		N/A	

SWITCH FUNCTION