

## FEATURES

- Rated currents from 30A
- Designed for enhanced filtering
- Designed for enhanced filtering
- Excellent differential and common-mode attenuation

## RS PRO Power Line Filters

RS Stock No.: 2378731, 2378732



RS Professionally Approved Products bring to you professional quality parts across all product categories. Our product range has been tested by engineers and provides a comparable quality to the leading brands without paying a premium price.

### Product Description

- Electrical and electronic equipment
  - Medical equipment
  - Building automation
- Office automation and datacom equipment

### General Specifications

Designed 2 stage enhanced filtering to prevent the power supply may produce interference to the device  
 Various terminal options allow you to select.  
 There are a variety of parts and combinations to meet different customer's EMC tests  
 Customized products according to customer's requirements

### Mechanical Specifications

size 94X55X44.5mm (L X W X H)  
 weight 0.410kgs

### Electrical Specifications

Rated Voltage Max.	250VAC,50/60Hz
Operating frequency	DC to 400Hz
Rated currents	30A@40°C
Hipot Rating	L-N 1450VDC, L/N-G 2000VAC/2250VDC

### Protection Category

**according to IEC 60529 IP40**

### Classification

**eCl@ss (Version)**  
**UNSPSC (Version)**

### Approvals

Declarations CUL;TUV;CQC;CE

Hazardous Area Certification

Standards Met

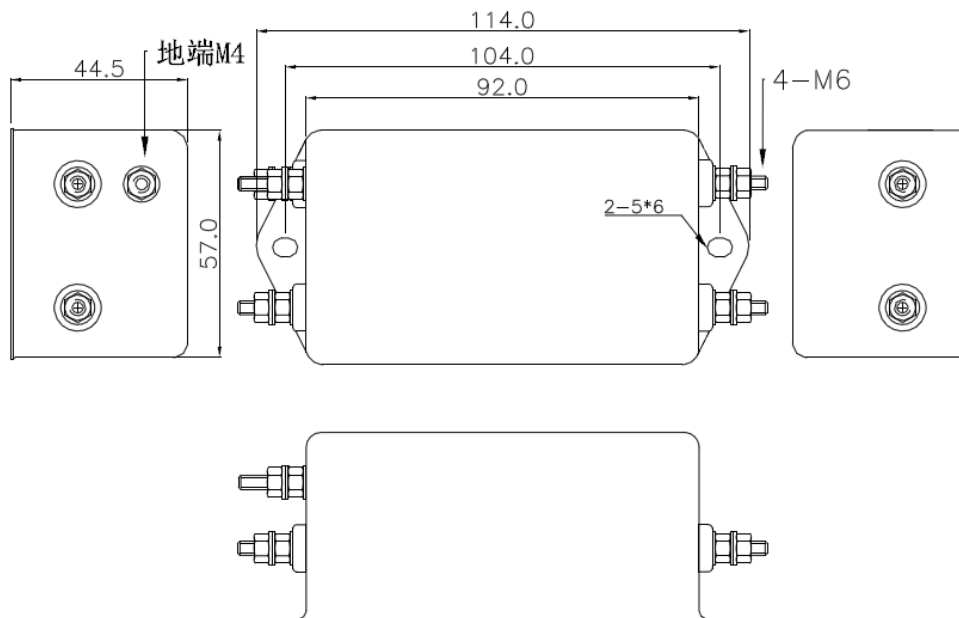
UL1283, CSA C22.2 No.8; IEC/EN 60939;; CQC GB 15288/GB 15287-2008
--

### Similar Products

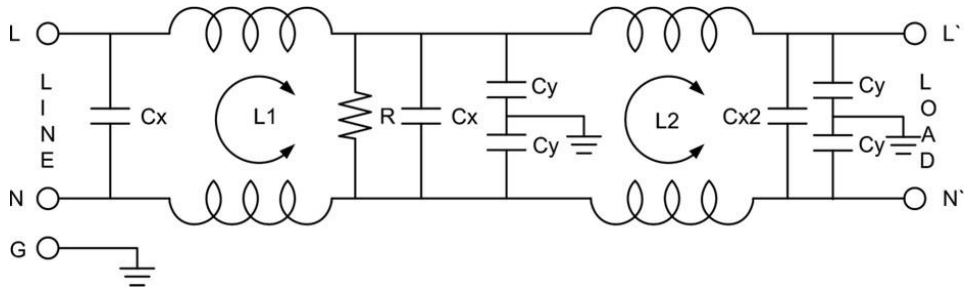
Stock No.	Brand	Product Name	Attribute 1	Attribute 2	Attribute 3
2378727, 2378728	292824				
2378729, 2378730	292818				
2378731, 2378732	7546061 / 1705148				

Connection Diagrams / Assembly Diagrams / Illustrations / Accessories

### Physical Dimensions:



**Electrical Schematic:**



**Insertion loss table(In 50ohm system according IEC/CISPR No.17)**

———— Common mode      - - - - - Differential mode

