

Datasheet

METAL FEEDTHROUGH CONNECTORS FT Series

The Metal FT Series of true feed through connectors are perfect for developing custom I/O configurations for wall-plates, rack panels, etc. ALL fit within a standard XLR panel cutout, and use common cabling for front and back connections. No soldering, no punch terminations, just use the standard cable for that particular connector style. Mount from the front or back, low rear profile accommodates the tightest "behind the panel" spaces. Available in a wide variety of styles.



RS Part No. Description
907-5621 USB 3.0 A to USB 3.0 A, Nickel Plated, CSK hole.

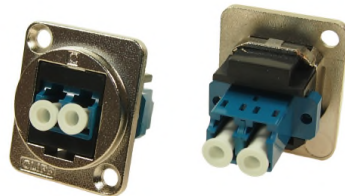
RS Part No. Description
907-5624 USB 3.0 B to USB 3.0 A, Nickel Plated, CSK hole.

RS Part No. Description
907-5628 USB 2.0 B to USB 2.0 A, Nickel Plated, CSK hole.

RS Part No. Description
907-5637 USB 2.0 A to USB 2.0 A, Nickel Plated, CSK hole.



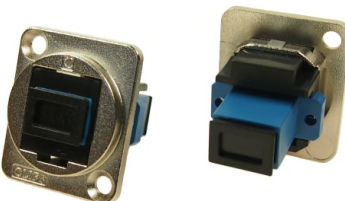
RS Part No. Description
907-5630 USB 2.0 A to USB 2.0 B, Nickel Plated, CSK hole.



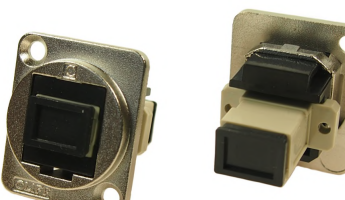
RS Part No. Description
907-5634 LC Duplex SM adaptor, Nickel Plated, CSK Hole



RS Part No. Description
907-5643 LC Duplex MM, Nickel Plated, CSK Hole



RS Part No. Description
907-5646 SC Simplex SM, Nickel Plated, CSK Hole



RS Part No. Description
907-5640 SC Simplex MM, Nickel Plated, CSK Hole



RS Part No. Description
907-5659 Toslink, CSK Hole



RS Part No. Description
907-5652 UTP Cat5e RJ45-RJ45, CSK Hole



RS Part No. Description
907-5656 FTP Cat5e RJ45-RJ45, Shielded, CSK Hole



RS Part No. Description
907-5665 UTP Cat6 RJ45-RJ45, CSK Hole



RS Part No. Description
907-5668 FTP Cat6 RJ45-RJ45, Shielded, CSK Hole



RS Part No. Description
907-5662 RCA Phono RED, CSK Hole



RS Part No. Description
907-5671 RCA Phono WHITE, CSK Hole



RS Part No. Description
907-5674 RCA Phono YELLOW, CSK Hole



RS Part No. Description
907-5678 Blanking Plate, CSK Hole