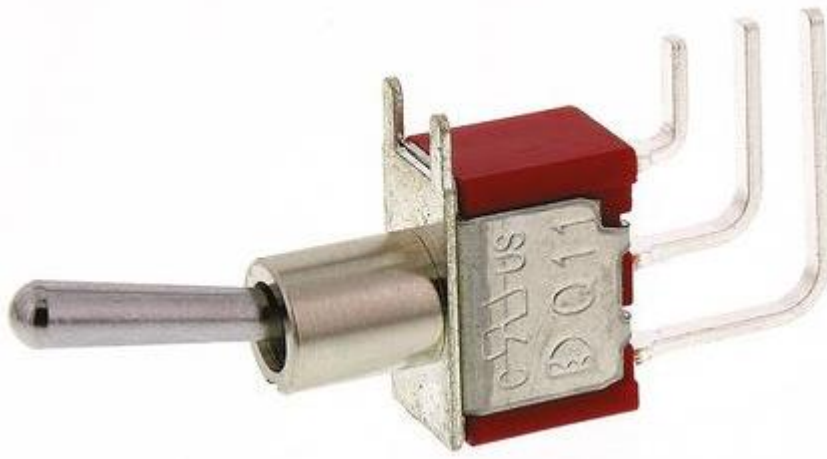


# Datasheet

## Miniature Toggle Switch

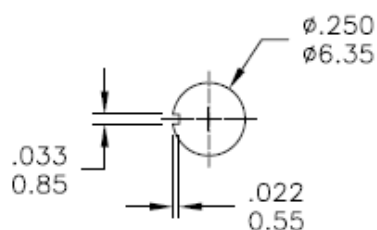
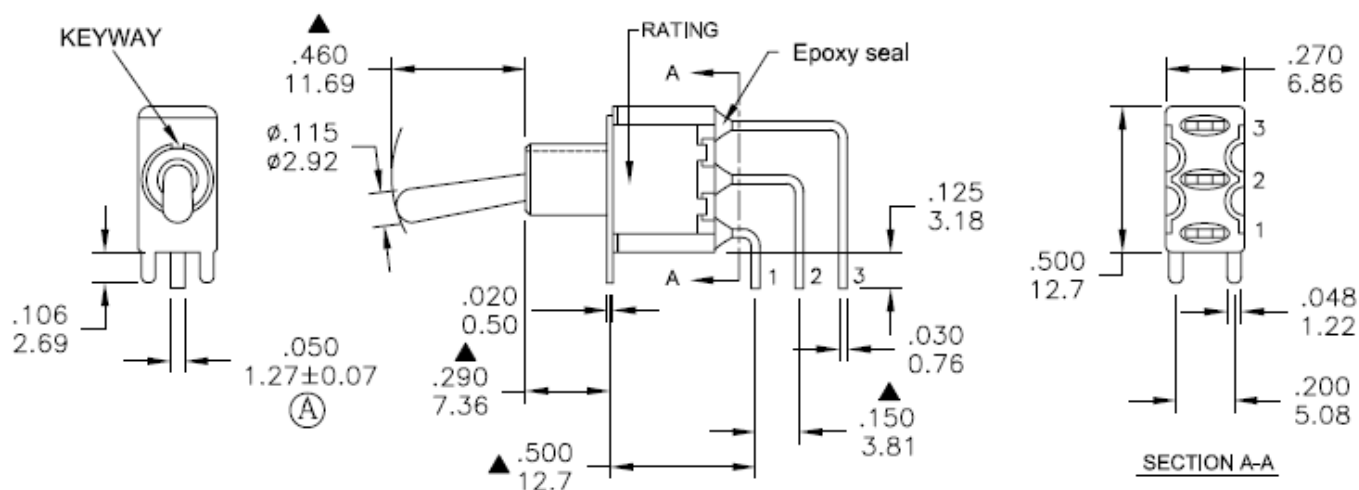
RS Stock number 734-7072



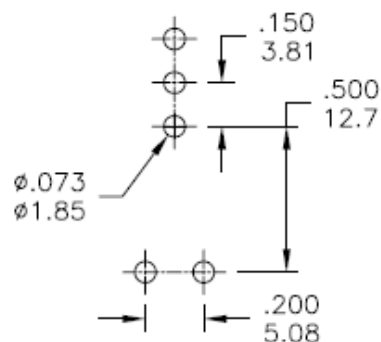
### Specifications:

|                        |   |
|------------------------|---|
| MECHANICAL LIFE:       | 40,000 make-and-break cycles.   |
| CONTACT RESISTANCE:    | 10mΩ max. initial @ 2-4VDC 100mA for both silver and gold plated contacts |
| INSULATION RESISTANCE: | 1000MΩmin.  |
| DIELECTRIC STRENGTH:   | 1,000Vrms min. @ sea level.   |
| OPERATING TEMPERATURE: | -30°C to 85°C.  |
| CASE:                  | Dially phthalate (DAP) UL94v-0)   |
| ACTUATOR:              | Brass, chrome plated  |
| Bushing:               | Brass, nickel plated  |
| Housing:               | Stainless steel   |
| CONTACT/TERMINAL:      | Brass, Silver or gold plated  |
| Switch Support:        | Brass, tin plated   |
| RoHS:                  | 2002/95/EC  |

**Dimensions – inch  
mm**



PANEL MOUNTING



P.C. MOUNTING

| Model No.   | POS.1 | POS.2 | POS.3 |
|-------------|-------|-------|-------|
|             | 1MS1  | ON    | NONE  |
| Term. Comm. | 2-3   | N/A   | 2-1   |
| SCHEMATIC   |       |       |       |

SWITCH FUNCTION