

Features

- High quality electricians insulated tool kit
- Supplied in a fitted PP case
- All tools are approved to ESI 26-3 for live working up to 1000 V

RS PRO 8 Piece VDE/1000 V Electricians Tool Kit

RS Stock No.: 575-548



RS PRO Professionally Approved Products bring to you professional quality parts across all product categories. Our product range has been tested by engineers and provides a comparable quality to the leading brands without paying a premium price.

Product Description

The RS PRO 8-piece electrician tool kit consist of 165 mm diagonal cutter, 210 mm combination pliers, 250 mm slip joint pliers and parallel and pozidriv screwdriver. This tools comes in a high quality PP case for added safety. Here all tools are approved to ESI 26-3 for live working up to 1000 V.

General Specifications

Number of Pieces	8
Set Contents	Diagonal Cutter: 165 mm, Combination Pliers: 210 mm, Slip Joint Pliers: 250 mm, Parallel Screwdrivers: 3 x 100; 5.5 x 150; 6.5 x 40 mm, Pozidriv Screwdrivers: PZ0 (4 x 150 mm); PZ2 (6 x 125 mm)
Set Type	Electricians
VDE/1000V Approved	Yes

INSULATED TOOL KIT

All items in tool kit marked thus: - ★

Sheet 1

MS4 Universal pliers

Standards NFC 18400, IEC 900, ISO 5745, NFE 73 103, DIN 5244

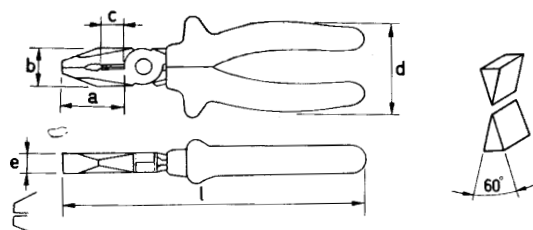
MS4

Features:

- chrome vanadium steel, high carbon content,
- individual induction heat treatment of the cutters
- special machining of the cutters,
- burnished head presentation.



L/mm	L/inch	a	b	c	d	e	Weight/g	Cutting capacity			
								Copper wire 45 kg/mm ²	Soft wire 80 kg/mm ²	Hard wire 140 kg/mm ²	piano wire 200 kg/mm ²
140	5 1/2	30	22	13	53	10	180	3	2	1.8	1.6
165	6 1/2	32	24	16	56	11	250	3.3	2.5	2	1.7
185	7"	36	28	19	59	12	340	3.7	3	2.3	1.8
★ 210	8"	45	32	22	63	14	490	4	3.2	2.4	1.9
220	9"	50	36	25	66	16	450	4.2	2.3	2.5	2



MS5 Diagonal cutting pliers

Standards NFC 18400, IEC 900, ISO 5749, NFE 73 105, DIN 5238

Features:

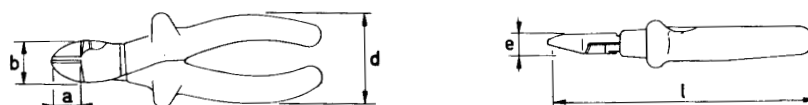
- vanadium chrome steel, high carbon content,
- cutters individually induction heat treated, specially machined.

Finish: burnished head.



MS5

L/mm	L/inch	a max.	b max.	d	e max.	Weight/g	Cutting capacity			
							Copper wire 45 kg/mm ²	Soft wire 80 kg/mm ²	Hard wire 140 kg/mm ²	Piano wire 200 kg/mm ²
145	5 1/2	16	23	56	10	220	3	2.5	1.9	1.7
★ 170	6 1/2	18.5	26	59	11	300	3.4	3	2.1	1.8
190	7 1/2	20.5	29	60	12	410	3.7	3.3	2.5	2.2



INSULATED TOOL KIT

All items in tool kit marked thus: – ★

Sheet 2

MS8 Slip joint plier

Standards NFC 18 400, IEC 900, DIN 5231

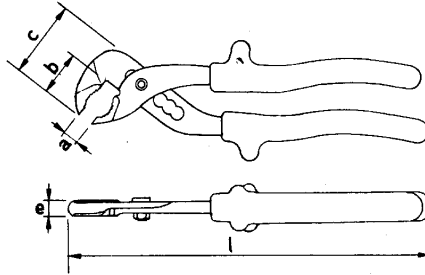
Features:

- forged chrome vanadium steel
- head and noses tapered for places difficult to reach, rack joint,
- 6 setting positions.

Finish: chrome plated.

L/mm	L/inch	a	b	c	e	Weight/g
205	8"	30	25	45	7	230
★ 250	10"	40	30	54	8	400
310	12"	55	38	68	11	670

★



MS8



IP18 Screwdriver with machine cut blade for Pozidrive screws

Standards NFC 18400, IEC 900, NFE 25 021, ISO 4757

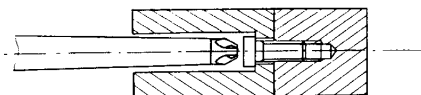
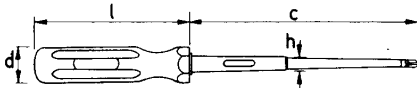
Features:

- chrome vanadium steel blade, acetate handle.

Special feature:

- The ergonomic design of the handle provides a tight grip, especially when wearing gloves, as well as high torque power with limited effort required.
- The patented recessed shank design allows total safety when working on recessed screw-heads.

Finish: burnished head



Dimensions						
Metric a x c	Inch a x c	d	h	L	Weight/g	
n° 0 4 x 75	5/32 x 3"	19	6	87	50	
★ n° 0 4 x 150	5/32 x 6"	23	7	95	55	
n° 1 5 x 100	3/16 x 4"	23	7	95	60	
★ n° 2 6 x 125	1/4 x 5"	25	7	105	82	
n° 3 8 x 150	5/16 x 6"	28	9	117	146	
n° 4 10 x 200	3/8 x 8"	33	12	127	256	

★

★



IP18

INSULATED TOOL KIT

All items in tool kit marked thus: – ★

Sheet 3

IS18 Screwdriver with recessed blade for slot-head screws

Standards NFC 18400, IEC 900, ISO 2380, NFE 74352, DIN 5266

Features:

- chrome vanadium steel blade,
- acetate handle.

Special feature:

- The ergonomic design of the handle provides a tight grip, especially when wearing gloves, as well as high torque power with limited effort required.

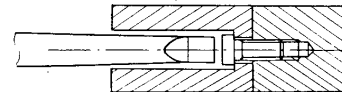
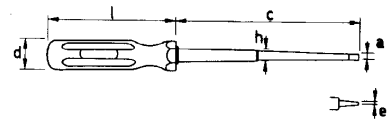
- The patented recessed shank design allows total safety when working on recessed screw-heads.

Finish: burnished head



IS18

Dimensions							
METRIC a x c	INCH a x e	e	d	h	L	Handle n°	Weight/g
★ 2 x 70	5/64 x 2-3/4"	0.36	16	\	75	3	16
★ 3 x 100	1/8 x 3-7/8"	0.44	19	\	87	4	30
★ 4 x 120	5/32 x 4-5/8"	0.71	23	6	95	5	52
★ 5.5 x 100	7/32 x 3-7/8"	0.90	23	7	95	5	50
★ 5.5 x 150	7/32 x 6"	0.90	23	7	95	5	72
★ 6.5 x 150	1/4 x 6"	1.08	25	8	105	6	92
★ 8 x 150	5/16 x 6"	1.08	28	9	117	8	142
★ 8 x 200	5/16 x 8"	1.08	28	9	117	8	166
★ 10 x 150	3/8 x 6"	1.42	33	11	127	10	216
★ 10 x 250	3/8 x 10"	1.42	33	11	127	10	282
★ 12 x 200	1/2 x 8"	1.79	33	11	127	10	318



IS18 Stubby screwdriver for slot-head screws

Standards NFC 18400, IEC 900, ISO 2380, NFE 74 352, DIN 5264

Features:

- chrome vanadium steel blade, acetate handle,
- for slotted head screw thickness: 1 mm slot thickness

Finish: burnished head.



IS18

Dimensions						
METRIC a x c	INCH a x c	d	h	L	Handle n°	Weight/g
★ 6,5 x 40	1/4 x 1-5/8"	28	7	50	B	36

