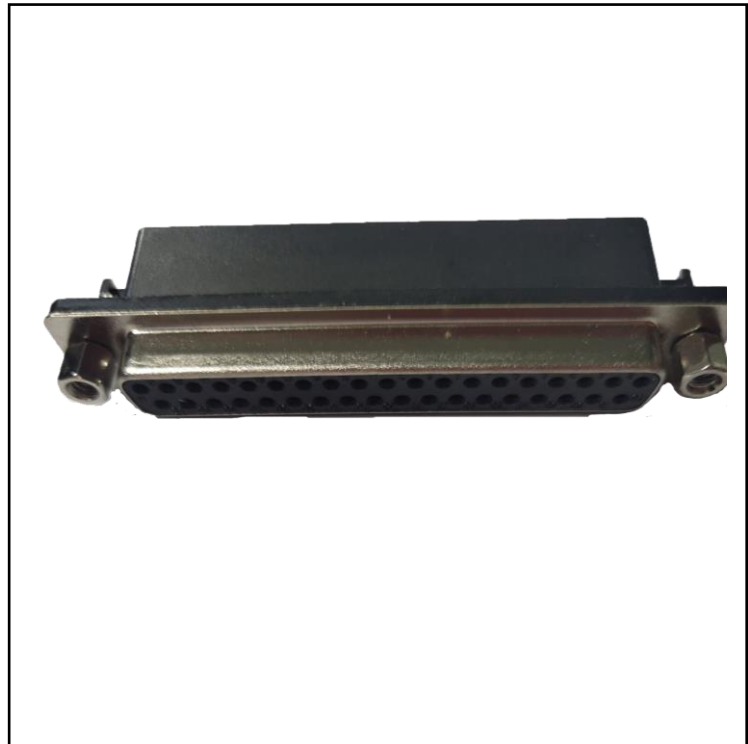


FEATURES

- Sturdy design
- Durable tin plated steel case
- Good contact for gold - plated embossing
- Good EMI/RFI protection

RS PRO Family Name

RS Stock No.: 2469487



RS Professionally Approved Products bring to you professional quality parts across all product categories. Our product range has been tested by engineers and provides a comparable quality to the leading brands without paying a premium price.

Product Description

The D-Sub connector is a common Type of I/O (input/output) contact widely used in the computer and data storage industries to provide power and point-to-point communication between two devices such as computers and monitors.

The D-SUB connector consists of two or more rows of parallel pins or sockets surrounded by a D-shaped metal shell to provide mechanical support and ensure proper positioning during fitting. These D-Sub connectors can be used as female D-Sub sockets (or D-SUB sockets) and female contacts, or male D-SUB plugs and male pin contacts. Receptacle type female connector and plug type male connector are connected.

Please note that d-Sub with plastic housing cannot be coupled to D-SUB with metal housing.

General Specifications

Shell	SPCC Material, Nickel Plated Front, Tin Plated Rear
Insulator	P.B.T+30% Glass Fibre(UL94V-0)
Contact Finish	Gold Flash On Contact Area, Tin Plated On Solder Tail, under Plated Nickel
Contact Material	Brass
Screw	12L14, Nickel Plating
Gender	Male
Mounting Type	Panel installation

Electrical Specifications

Operating Temperature	-50°~+105°
Current Rating	5amps
Withstanding Voltance	1000V (one minute)
Contact Resistance	20mΩ max
Insulation Resistance	1000mΩ Min. at 500V DC

Protection Category

--	--

Additional Information

EAN	
Custom Tariff Number	

Classification

eCl@ss (Version)	
UNSPSC (Version)	

Approvals

Declarations	CE
Hazardous Area Certification	
Standards Met	ROHS

Similar Products

Stock No.	Brand	Product Name	Attribute 1	Attribute 2	Attribute 3
5444017	RS PRO	D-Sub Connector	Study design	Operating Temperature is 50°~+105°	

Connection Diagrams / Assembly Diagrams / Illustrations / Accessories

POSITION	A	B	C	d	D	e	E
09(M,P,Q,A)	16.34	25.00	30.8	03	08.31	04	11.08
15(M,P,Q,A)	24.76	33.30	39.2	06	16.62	07	19.39
25(M,P,Q,A)	38.33	47.10	53.1	11	30.47	12	33.24
37(M,P,Q,A)	54.89	63.50	69.4	17	47.09	18	49.86

