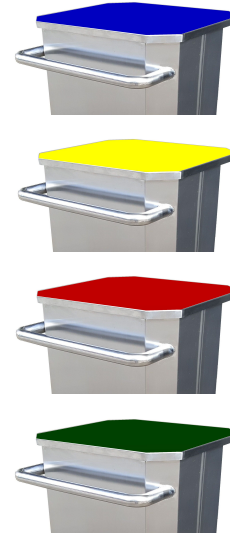


SSPB92

92-Litres Stainless Steel Foot Pedal Bin



Optional: Colour coded lid.



Description

2-wheels *Stainless Steel* pedal bin c/w wide top opening, galvanized steel inner bin and hinged lid. Non-combustible, smooth inner/ outer surfaces for easy maintenance.

Non-marking wheels ensure smooth mobility.

Lifting the lid while handling foodstuffs or soiled wastes is no longer hard work with the non-corrosive center foot pedal. Anti over flipping feature, ensure the lid to close on every step. Keeping pest & bacteria at bay. Highly recommended for kitchens and engine rooms (oily rags) application.

Definitely a must for all hospitals and medical centres for handling all your biohazard wastes.

Pasted with recycling label, it transformed instantaneously into a recyclable bin.

Model	Width (mm)	Depth (mm)	Height (mm)	Capacity (Litres)	Approx. Weight (kg)
SSPB92	450	400	940	92	12.0