

## FEATURES

- These ball spring plungers
- The threaded body has a screwdriver slot
- Available either in black oxide finish or stainless steel
- Retained hardened steel ball
- Temperature range up to 250°C
- Black oxide supplied - 10 per bag
- Stainless steel supplied - 5 per bag

## RS PRO M3 Spring Plunger, 7.5mm Long

RS Stock No.: 478-652



RS Professionally Approved Products bring to you professional quality parts across all product categories. Our product range has been tested by engineers and provides a comparable quality to the leading brands without paying a premium price.

## Product Description ATTRIBUTE

These Ball Spring Plungers from our own RS PRO brand are ideal for applications where a pre-defined positional stop is required or positioning a work piece against a datum face. A ball end spring plungers are available in steel and stainless steel material.

## General Specifications

<b>Type</b>	Spring Plunger
<b>Body Material</b>	Burnished steel
<b>Thread Size</b>	M3
<b>Applications</b>	Clamping of adjustable elements, Positioning of work pieces, Latching of mechanisms
<b>Surface Treatment</b>	black oxide finish or stainless steel

## Mechanical Specifications

<b>Length</b>	7.5mm
<b>Ball Diameter</b>	1.5mm

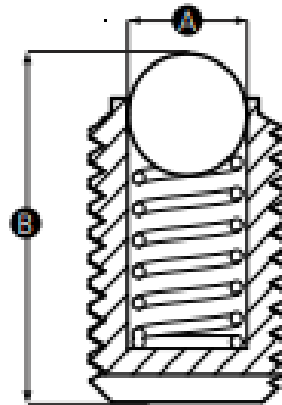
## Operation Environment Specifications

<b>Operating Temperature</b>	Upto 250°C
------------------------------	------------

## Approvals

Compliance/Certifications

RoHS



Part No.	A	B	Thread size	Body material
478652	1.5	8	M3	Burnished steel
478636	2.5	10	M4	Burnished steel
478668	3	13	M5	Burnished steel
478658	3.5	15	M6	Burnished steel
478731	5	18	M8	Burnished steel
478737	6	21	M10	Burnished steel
478747	8	25	M12	Burnished steel
478753	10	28	M16	Burnished steel
478664	12	35	M20	Burnished steel
478743	1.5	8	M3	Stainless steel
478567	2.5	10	M4	Stainless steel
478917	3	13	M5	Stainless steel
478927	3.5	15	M6	Stainless steel
478911	5	18	M8	Stainless steel
478573	6	21	M10	Stainless steel
478608	8	25	M12	Stainless steel
478563	10	28	M16	Stainless steel
478923	12	35	M20	Stainless steel