

Fellowes

Office Comb Binder

Quasar™ e 500



Please read these instructions before use.
Do not discard: keep for future reference.

Lire ces instructions avant utilisation.
Ne pas jeter : conserver pour référence ultérieure.

Lea estas instrucciones antes de usarlo.
No las deseche: guárdelas para tenerlas como referencia.

Diese Anleitungen vor Gebrauch genau durchlesen.
Bitte nicht entsorgen: zur späteren Bezugnahme aufheben

Prima dell'uso, si raccomanda di leggere questo manuale di istruzioni. Conservare il manuale per consultarlo secondo le necessità.

Dese instructies voor gebruik lezen. Niet weggoeien, maar bewaren om later te kunnen raadplegen.

Läs dessa anvisningar innan du använder apparaten.
Släng inte bort, behåll för framtida bruk.

Læs venligst denne vejledning før anvendelse.
Bør ikke bortskaffes. Behold for fremtidig henvisning.

Lue nämä ohjeet ennen käyttöä.
Älä hävitä: säilytä myöhempää käyttöä varten.

Vennligst les nøye igjennom denne bruksanvisningen før bruk.
Ikke kast den: Ta vare på den for senere referanse.

Przed użyciem proszę zapoznać się z tą instrukcją.
Nie wyrzucać - zachować jako źródło informacji na przyszłość

Перед началом эксплуатации обязательно прочтите данную инструкцию.
Не выбрасывайте данную инструкцию: сохраните ее для последующего использования.

Παρακαλείσθε να διαβάσετε αυτές τις οδηγίες πριν χρησιμοποιήσετε το προϊόν.
Μην τις απορρίψετε: κρατήστε τις για μελλοντική αναφορά

Kullanmadan önce lütfen bu talimatları okuyun.
Atmayın: ileride başvurmak üzere saklayın.

Před použitím si přečtete tyto pokyny.
Nelíkvídjte: uschovejte pro budoucí použití.

Pred použitím si prečítajte tieto pokyny.
Nezahadzujte: odložte pre budúce použitie.

Kérjük, hogy használat előtt olvassa el az utasításokat!
Az utasításokat ne dobja ki; tartsa meg referenciaanyagként való jövőbeni használatra.

Leia estas instruções antes da utilização.
Não as deite fora: conserve-as para consulta futura.

Pročitajte ove upute prije upotrebe.
Nemojte baciti: sačuvajte za buduću upotrebu.

Molimo da ova uputstva pročitate pre upotrebe.
Nemojte ih baciti: sačuvajte ih za ubuduće.

Моля, прочетете тези инструкции преди употреба.
Не изхвърляйте: пазете за справки в бъдеще.

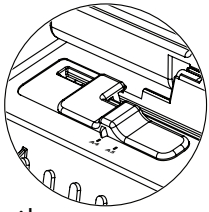
Vă rugăm să citiți aceste instrucțiuni înainte de utilizare.
Nu aruncați: păstrați pentru o consultare ulterioară.

Pred uporabo preberite ta navodila.
Ne zavržite: shranite za poznejšo uporabo

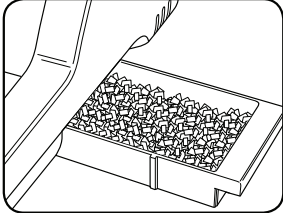
يرجى الاطلاع على الإرشادات قبل الاستعمال.
لا يجب التخلص من هذه الإرشادات. ويرجى حفظها للرجوع إليها في المستقبل.

נא לקרוא הוראות אלה לפני השימוש.
אין להשליך: שמרו לעיניכם בעתיד.

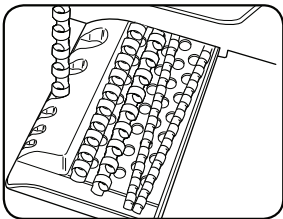
ENGLISH



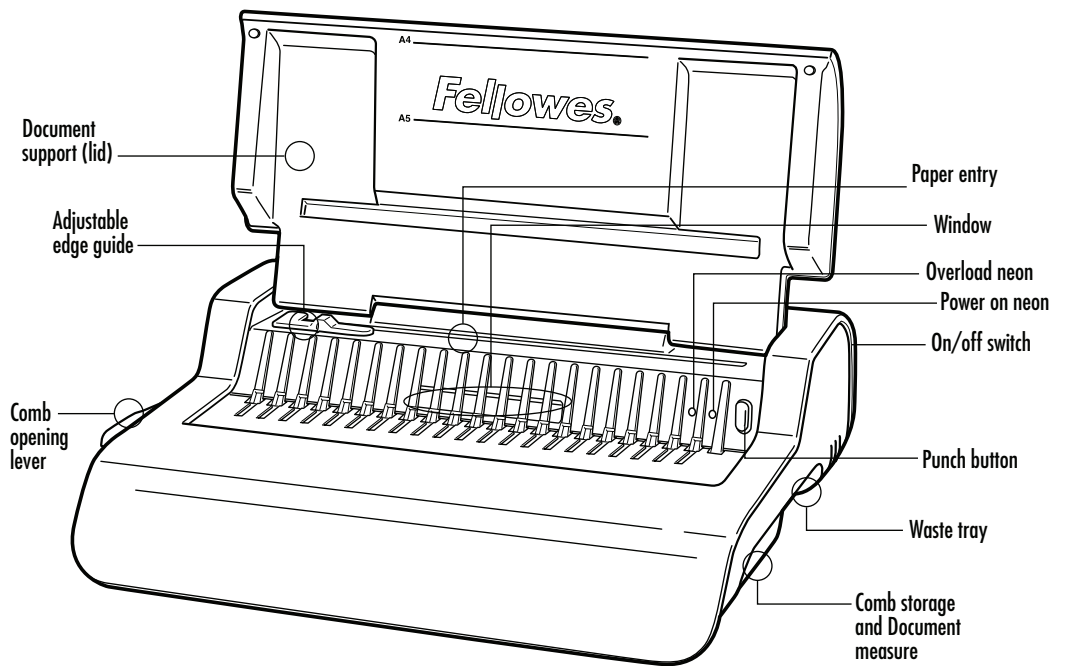
Edge guide



Waste tray



Comb storage and Document measure



CAPABILITIES

Punching Capacity

Paper sheets

80g / 20lb 25 sheet

Transparent covers

100-200 micron / 4-8 mil 3 sheet

200+ micron / 8+ mil 2 sheet

Other standard covers

160-270g / 40-60 lb 3 sheet

270+g / 60+ lb 2 sheet

Voltage: 220-240V AC 50/60Hz

Current: 1.5A

Duty Cycle: 30 Minutes On / 30 Minutes Off

Binding Capacity

Max comb size 50mm/2"

Max document (80g / 20lb) 500 sheet

Technical Data

Paper dimensions A4

Punching slots 21

Slot pitch 14.28mm / 9/16"

Adjustable edge guide yes

Waste tray capacity approx. 1500 sheets

Motor wattage 345

Net weight 9.6 kg / 21.21 lb

Dimensions (HxWxD) 130 x 428 x 390mm / 5.1" x 16.9" x 15.4"

IMPORTANT SAFETY INSTRUCTIONS — Read Before Using!



Please keep for future reference

When punching;

- always ensure the machine is on a stable surface
- test punch scrap sheets and set the machine before punching final documents
- remove staples and other metal articles prior to punching
- never exceed the machines quoted performance

Keep the machine away from heat and water sources.

Never attempt to open or otherwise repair the machine.

Plug the machine into an easily accessible socket.



Turn off the machine after each use

Unplug the machine when not in use for an extended period.

Note – this machine features a thermal cut-out device which activates when the machine is overheated during use. It will automatically reset when the machine is safe to operate.

COMB DIAMETER & DOCUMENT SIZES

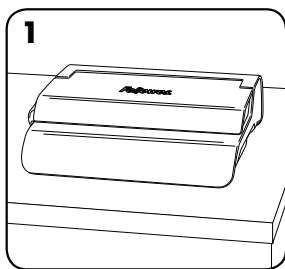
Comb diameter sizes

		
mm	inch	number of pages
6mm	1/4"	2-20
8mm	5/16"	21-40
10mm	3/8"	41-55
12mm	1/2"	56-90
16mm	5/8"	91-120
18mm	1 1/16"	121-150
22mm	7/8"	151-180
25mm	1"	181-200
32mm	1 1/4"	201-240
38mm	1 1/2"	241-340
45mm	1 3/4"	341-410
51mm	2"	411-500

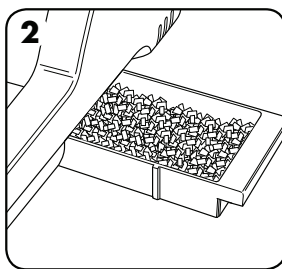
Need Help?

Customer Service... www.felloses.com
 Let our experts help you with a solution.
 Always call Felloses before contacting your
 place of purchase.

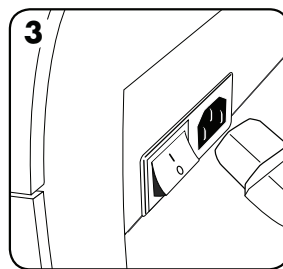
SET UP



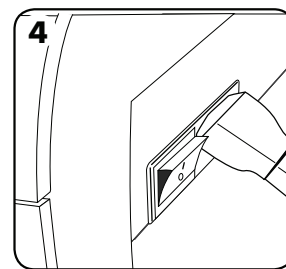
1. Ensure the machine is on a stable surface.



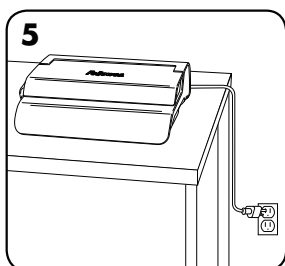
2. Check waste tray is empty and correctly fitted.



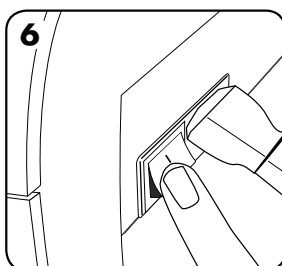
3. The machine is supplied with loose power leads. Select the correct lead for the appropriate power supply.



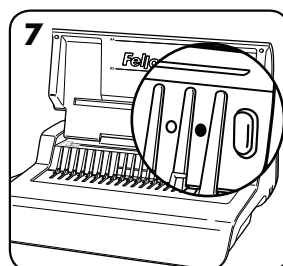
4. Fit the lead to the machine (the socket is at the rear of the machine).



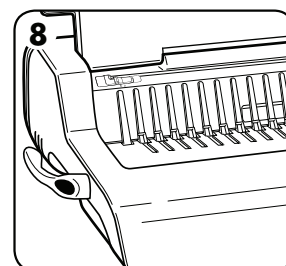
5. Plug the machine into an easily accessible mains socket. Switch the mains supply on.



6. Switch the machine on (located at the rear of the machine)



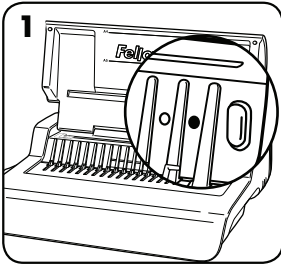
7. Lift the lid. Check the green power neon is on.



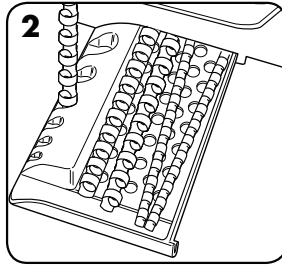
8. Ensure the comb-opening lever is pushed backwards.

ENGLISH

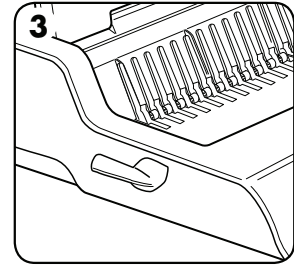
BEFORE YOU BIND



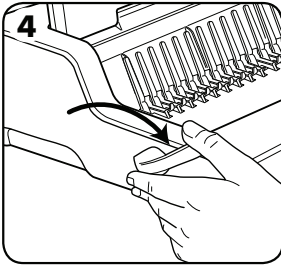
1. Check the green power neon is on.



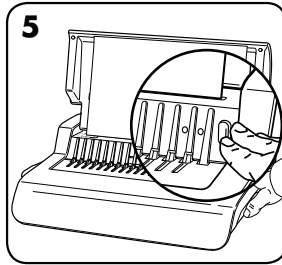
2. Select the correct comb diameter using the comb storage tray.



3. Insert the plastic comb into the opening mechanism.

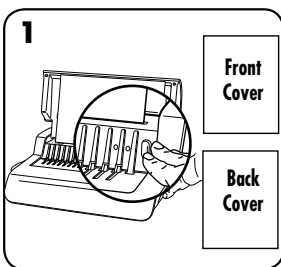


4. Pull comb-opening lever forward to open the comb.

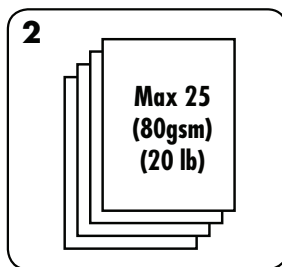


5. Test punch scrap sheets to check edge guide setting.

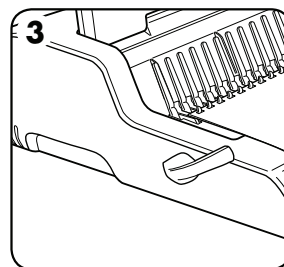
STEPS TO BIND



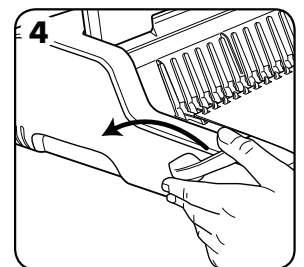
1. Ensure edge guide is set to the proper document size. Punch front and back covers first.



2. Punch sheets in small batches that do not overload the machine or the user. Adjust edge guide, if necessary.



3. Load punched sheets directly onto the opened comb. Starting with the front of the document.



4. When all punched sheets are loaded onto the comb, push the comb lever backwards to close the comb and remove the bound document.

CORRECTING A BOUND DOCUMENT

Additional sheets may be include or removed at any time by opening and then closing the comb as previously described.

REMOVAL OF WASTE CLIPPINGS

The waste tray is located under the machine and is accessed from the right side. For best results empty the tray regularly.

STORAGE

Switch off the machine. Lower the lid. The Quasar-E comb binder is designed to be stored horizontally on the desk.

TROUBLESHOOTING

Problem	Cause	Solution
No Green power neon	Machine is not switched on	Switch on machine at rear next to plug inlet and at the socket.
Red standby neon	Machine is overloaded when punching	Press the punch button. The machine will withdraw the punches and re-set itself. Continue this process until the punch cycle is complete
Punched holes are not central	Edge guide not set	Adjust edge guide to correct paper or cover size.
Machine will not punch	Blockage	Check waste tray is empty. Check for blockage to paper entry.
Punch holes are not parallel to edge.	Debris is stuck below dies.	Take stiff cardboard and slide into the paper entry. Move the cardboard sideways to release any stray clippings into the waste tray.
Partial holes	Sheets not correctly aligned to punch pattern.	Adjust edge guide and test punch scrap sheets until correct
Damaged hole edges	Possibly overloading the machine	Punch plastic covers with paper sheets. Reduce number of sheets being punched.
Waste tray leaks	Waste tray is not correctly inserted or 'burst feature' has activated	Check waste tray is empty and 'burst feature' is closed.

WARRANTY

Fellowes warrants all parts of the binder to be free of defects in material and workmanship for 2 years from the date of purchase by the original consumer. If any part is found to be defective during warranty period, your sole and exclusive remedy will be repair or replacement, at Fellowes' option and expense, of the defective part. This warranty does not apply in cases of abuse, mishandling or unauthorised repair. Any implied warranty, including that of merchantability or fitness for particular purpose, is hereby limited in

duration to the appropriate warranty period set forth above. In no event shall Fellowes be liable for any consequential damages attributable to this product. This warranty gives you specific legal rights. You may have other legal rights that vary from this warranty. The duration, terms and conditions of this warranty are valid worldwide, except where different limitations, restrictions or conditions may be required by local law. For more details or to obtain services under this warranty, please contact Fellowes or your dealer.

Australia Residents Only:

Our goods come with guarantees that cannot be excluded under the Australian Consumer Law. You are entitled to a replacement or refund for a major failure and for compensation for any other reasonably foreseeable loss or damage. You are also entitled to have the goods repaired or replaced if the goods fail to be of acceptable quality and the failure does not amount to a major failure. The benefits under Fellowes' Warranty are in addition to other rights and remedies under a law in relation to the machine.