

## FEATURES

- Inductive sensors offer precise detection
- The sensors are completely encapsulated
- They also have an IP rating of 67
- These inductive sensors are non-embeddable
- 2m PVC pre-wired

## RS PRO M18 x 1 Inductive Sensor - Barrel, PNP-NO Output, 5 mm Detection, IP67, M12 - 4 Pin Terminal

RS Stock No.: 701-8244



RS Professionally Approved Products bring to you professional quality parts across all product categories. Our product range has been tested by engineers and provides a comparable quality to the leading brands without paying a premium price.

## Product Description

Introducing the range of RS PRO Inductive Proximity Sensors. These versatile and high-quality sensors are an essential addition to any environment where measurement of attributes like pressure, thickness, etc. are integral to business operations, like manufacturing plants and industrial environments. With the RS PRO seal of approval, you are guaranteed a premium performance product, without the premium product price tag.

## General Specifications

<b>Sensing/Detection Range</b>	5mm
<b>Output Type</b>	PNP-NO
<b>Connection/Terminal Type</b>	M12 - 4 Pin
<b>Cable length</b>	69mm
<b>Minimum Operating Temperature</b>	-25°C
<b>Maximum Operating Temperature</b>	75°C

## Electrical Specifications

<b>Operating Supply Voltage</b>	10V→30Vdc
<b>Switching Current</b>	200mA
<b>Switching Frequency</b>	1kHz
<b>Voltage drop</b>	≤ 2V
<b>Temperature drift / Hysteresis</b>	± 10 % / 5 % ... 15 %
<b>Wiring technique</b>	3 wire
<b>Contact maximum DC Voltage</b>	30V
<b>Short Circuit Overload Protection</b>	YES
<b>Reverse Polarity Protection</b>	YES
<b>Overload Protection</b>	YES

## Mechanical Specifications

<b>Body Style</b>	Barrel
<b>Mounting Type</b>	Flush Mount
<b>Thread Size</b>	M18 x 1
<b>Housing Material</b>	Metal, Nickel-plated brass
<b>Length</b>	69mm
<b>Shock and Vibration Resistance</b>	30g, 11ms/10 Hz ...55Hz, 1mm

## Protection Category

<b>IP Rating</b>	IP67
------------------	------

## Approvals

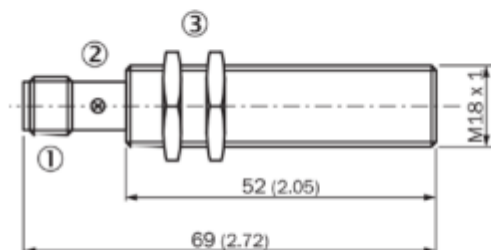
<b>Compliance/Certifications</b>	cULus Listed, EN 60947-5-2, RoHS Compliant, UL
<b>Declarations</b>	MFR Declaration of Conformity
<b>Hazardous Area Certification</b>	ATEX / IECEx



# Inductive Proximity Sensors

**Dimensional drawing** (Dimensions in mm (inch))

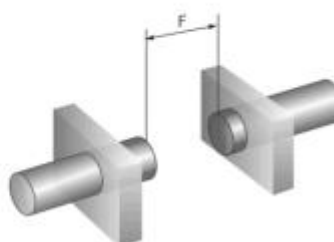
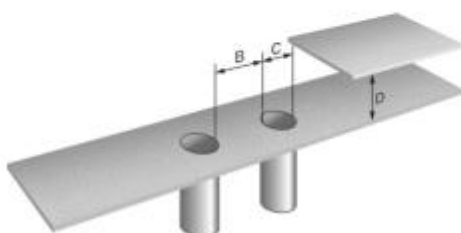
IME18 Standard, connector, flush



1. Connection
2. Indication LED
3. Fastening nuts (2x); width across 24, metal

## Installation

Flush installation



## Connection diagram

Cd-007

